

HAZBIU SIAMA SPACE SOUDANT

# The eyes of Berat

*(Osumi island resilience)*



The HAZBIU team comprises HAZBIU Projekt team leader, Sin international (space + slama), architects, town-planners & landscapers; Odile Soudant, lighting artist; HAZBIU Projekt includes also two individual professional experts: Fitim BALLO, hydro-technical engineer; Lida MIRAJ, specialist of culture monument. This team has been constituted to give an accurate vision of the Berat island Osumi project.

• Petrit HAZBIU will coordinate the engineering & cultural team inside the local sensibility & know-how, • Jean Robert MAZAUD and Thierry MELOT will develop the vision throughout the environment "BLUE method" which allows Sin international to think and drive sustainable city growth.

The Blue Method is a toolbox which has been developed by our founder Jean Robert MAZAUD to help decision-making in the strategic city-growth. This method is built starting from six sustainable development axes which are: Social coherence and progress / Culture and civilizations / Physical and mental integrity / Economic growth / Resources and Earth / Ecology and Biodiversity. These main axes are compared with the site-tanks, which are: Soils & undergrounds / Water / Air / Mobility / Ecosystems / Energy / Human factors / Landscape & geography / Heritage & history / Wastes / Materials / Context. The method is available at any scale of landscaping, city-design, territories, and architectural design...

• Odile SOUDANT, who is a well-known artist, close to Jean NOUVEL, Anish KAPOOR, Anselm KIEFFER whose she had work together, and Brad PITT as a client, will translate the landscaped and technical vision of architects as a enlighten land-art masterpiece.



## CONTENTS:

### The eyes of Berat (Osumi island resilience)

The team HAZBIU SIAMA SPACE SOUDANT	2
Design concept (brief)	2
Design concept presentation (detailed)	4
Materials and method of construction	18
Investments costs estimation	18
Copy of the attached A0 panels (5)	20

1. In the heart of Berat, the rivers' island Osumi is a focus point. The city, surrounded by its gorge and special lock site, is holding for a living space: as logs would suggest, the island is a drained place, a breath for the dense built web. But it is a space in movement, fluctuating at the whims of the river. It is a delicate balance between the vegetable, the living, and the hydraulic forces, which result from climate and its variations: a land of surprises, which is reborn after every flood, and of which the continental delivers a volume of water a hundred times higher than the low flow.
  2. Materialize by the nailing of spaced stakes, leaving the water flow operating, a punctation. The stakes are designed roughly and made of tree branches. They make a protection against debris in the flood, like the eyelashes filtering dust to the air. "Nets porous" occupation and work joined in a sustainable approach of an environmental protection: "The eyes of Berat".
  3. A third line of protection for biodiversity is made of wood branches "fascines", dedicating to pedestrian walkways the coastal spaces and preserving heart as natural sanctuaries for wildlife.
  4. Between the islands and the land, establish an interlocking of footbridges flowing above the river floods, suspended footbridges designed as wooden ships, "drip by drip".
  5. Create, along the city riverbank, a filtration made of phytosubstratum plantations to drain the rejected and polluted city waters and rains.
  6. Contemplate colors and lights, a land art work, offered to the looks from the balconies and terraces of the high city.
- How to organize the resilience of the site without the action implemented of this same resilience disfigures the values permanently? Acting punctually, providing a reactive energy, retraining from the surgery that transforms it.
- In terms of use for the inhabitants and visitors of Berat: the input is the one of a poetic space, the breath of the city, dial and sensitive: the island is Berat's lung. It's a place destined to a form of "pollution" of new urban practices that will allow the island on.
1. Locate with the hydraulic modeling the key lines friction. Assist the natural resilience. Protect the islands with gabion lines.

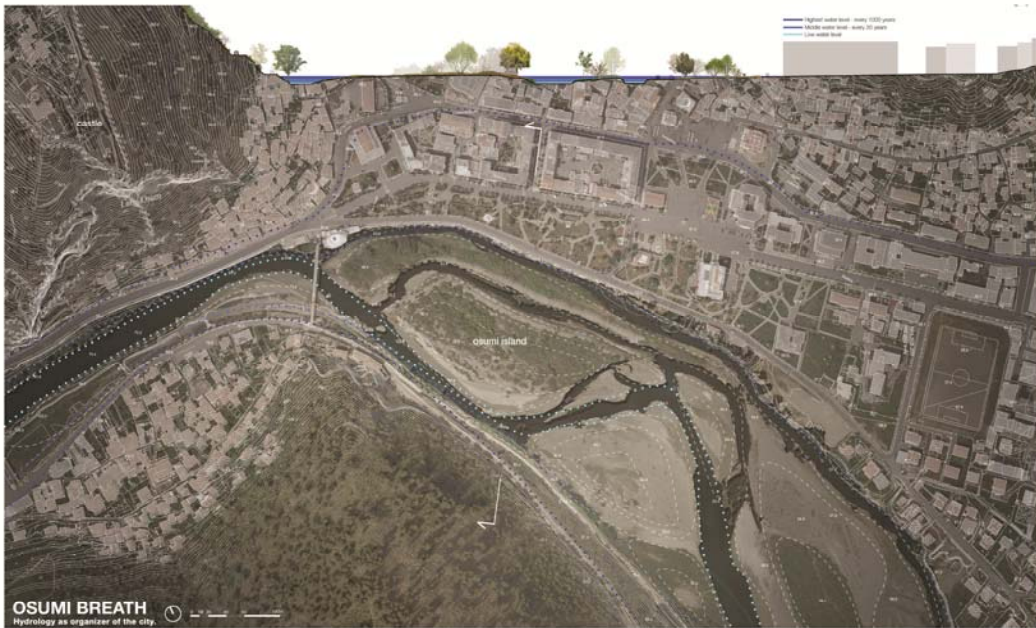


#### The eyes of BERAT (Osumi island resilience)

In the heart of Berat, historical city and a jewel of urban architecture, the rivers' island Osum is a focus point, to which open the slopes, streets and looks: the city is organized in balconies turned to this focal point, from the heights of the secular oppidum and the clinging neighborhoods of the rocky cliffs. This city, surrounded by its gorge and glacial lock site, is looking for a living space: as logic would suggest, the island is a desired place, a breath for the dense built web. But it is a space in movement, fluctuating at the whims of the river. It is a delicate balance between the vegetable, the living, and the hydraulic forces, which result from climate and its variations: a land of surprises, which is reborn after every flood, and of which the centennial delivers a volume of water 260 times higher than the low flow: 1850m<sup>3</sup> / sec against 7. Berat's gorge narrows down the passage of water, which discharge their stones at the upstream funnel sculpting Osumi's island with randomized arabesques that are permanently renewed.

Design concept presentation (detailed)





Facing such forces, to petrify the state of the island forever, and to turn it into an urban platform finally conquered over the rivers' violence appears to be, in our opinion, a triple misinterpretation:

- A promethean challenge, with no economical explanation given the work that has to be taken.
- An ecological crime, harming the rivers nature itself and the biodiversity that takes shelter in it.
- An esthetical error, in the place where the 'genius loci' is enough to deliver a feeling of fullness that the Human hand has to accompany, to highlight, to polish, without refuting.

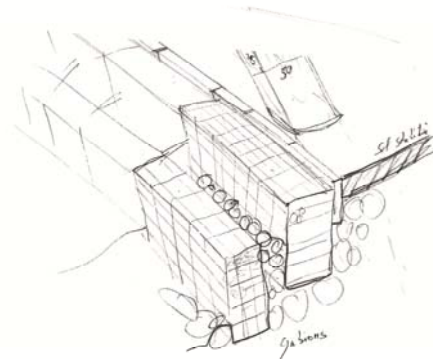
The challenge of the proposed planning reflection is then dual: how to enable the inhabitants of Berat to benefit from the use of the island, without compromising its essential quality of living space, dedicated to wildlife, to the expression of natural forces? How to organize the resilience of the site without the action implemented of this same resilience disfigures the values permanently? We offer a medicine that would be similar to acupuncture: acting punctually, providing a reactive energy, refraining from the surgery that transforms it.





We would suggest the establishment of a reactive resilience, meaning a system's ability to absorb the disturbance of the flood while remaining in its previous state after its passing: state which, to our eyes, is both the one of a work of art and the one of a constitutive natural space of the work. Therefore, we propose an intervention in six points, carried out as an artistic and a landscaped architectural acupuncture:

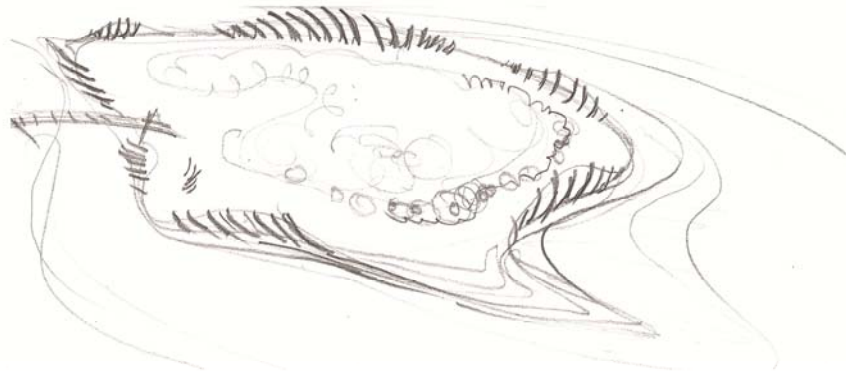
1. Locate with the hydraulic modeling that will carry out our consulting engineers, the key lines friction and abrasion sediment to assist the natural resilience that oppose the piles of rocks, the trees and endemic plants bouquets rooted in the low to high floods. In this space, from the annual flood to the 20 years flood, we will protect the islands with gabion lines adapted to the speed and volume of the flow, and forming stems where islands separate the flows.

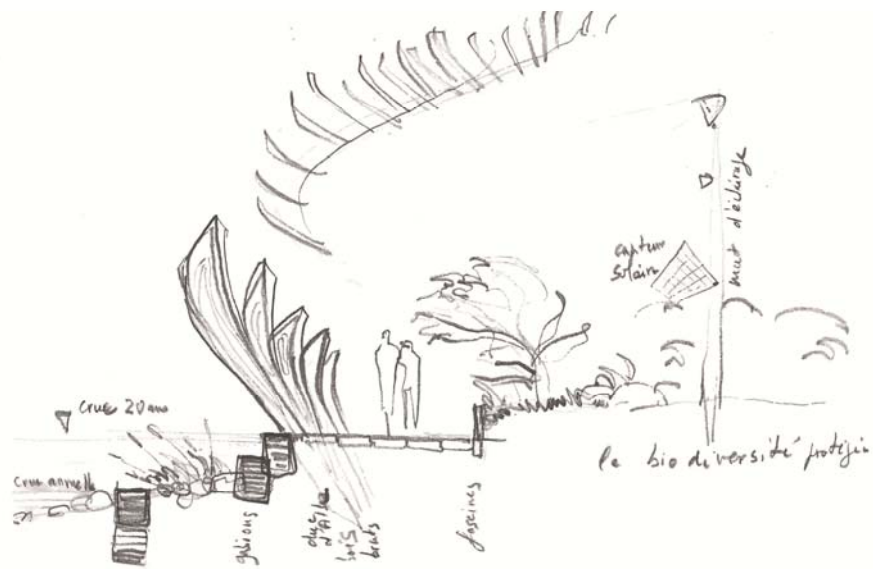






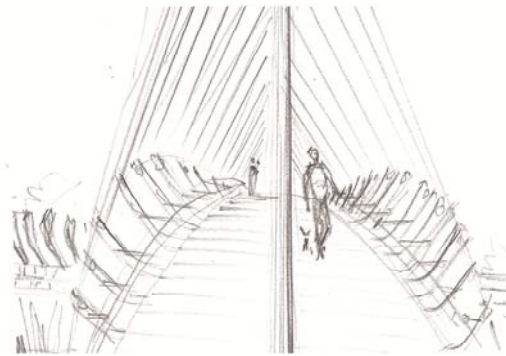
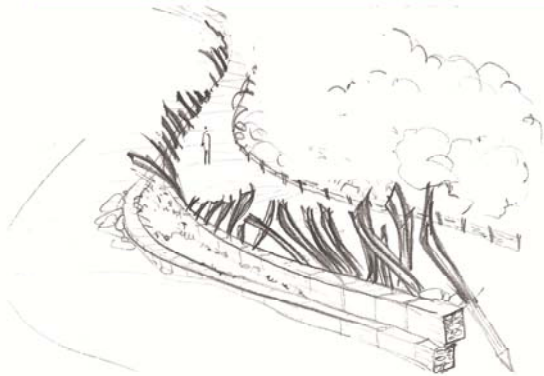
2. This first work will gently stabilize the shape of the emerging land over the 20 years annual flood. A second stronger assistance will be materialized as required by the nailing of spaced stakes, capable of channeling the biggest centennial or millennium flood debris, leaving the water flow operating, in order not to change the water course of these exceptional events: the flood strength have to be accepted by vegetation, wild life and men. It is then a punctuation that is suggested, a work of spots, emphasizing and visualizing the hydraulic force: this work is both light and decisive sets a certain balance state; it can be taken over and enhanced through time; it allows to the flora and fauna that is hosts to resist destruction. The stakes are designed roughly and made of tree branches: the workers will use the natural shape of the branches, exactly as was built the wooden ships. The size of these sculptural nails decrease or increase among the place of the curved waterline: they make a protection against debris in the flood, like the eyelashes filtering dust in the air. It's an "arte povera" inspiration and work, adapted to a functional need: form and function are joined in a sustainable approach of an environmental protection. "The eyes of Berat" could be the name of our proposal.

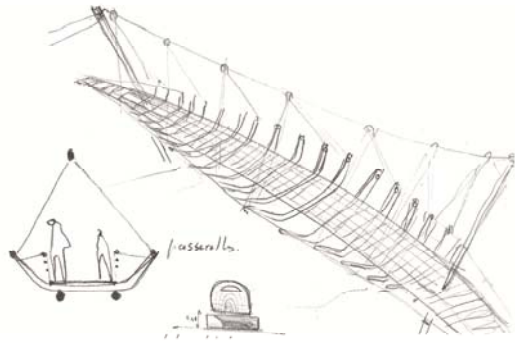
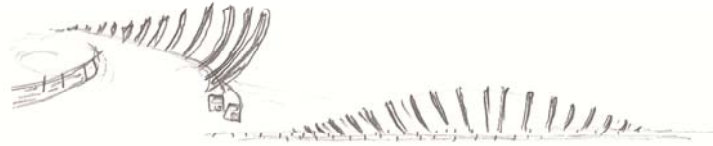




3. The costal spaces will be dedicated to pedestrian walkways, made of stabilized soils, and some urban furniture built in wood. A third line of protection for biodiversity is made of wood branches "fascines", (rough bundle of brushwood used for strengthening an earthen structure), making an efficient boundary between the men-accepted spaces and the respected and natural sanctuaries for wildlife.

4. Between the islands and the land, establish an interlacing of footbridges flowing above the river floods and stone deposits and concealing the walkers' silhouettes. These suspended footbridges are designed as wooden ships, plant structures, bird nests, accompanying the intricacies of water and authorizing the promenade and in specific points, stopping in such and such confined places, protected, adorned with carved works rooted in soil. We enter into it through narrow passages, distributing "drop by drop" the limited responsiveness of the island.





5. Along the city riverbank, from the marketplace to the Berat Bridge, create a filtration made of phytoremediation plantations to drain the rejected and polluted city waters and rains.



6. Bring with Odile Soudant's work the colors and lights to all so that the proposed intervention composes a real graphic picture, a land art work, offered to the looks from the balconies and terraces of the high city.





16  
The eyes of Berat (Osuni island resilience)  
HAZBU SIMA SPACE SOUDANT

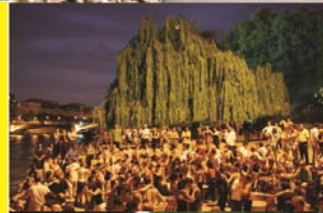




In terms of use for the inhabitants and visitors of Berat; the input is the one of a poetic space, the breath of the city, dual and sensitive: the island is Berat's lung.

It's a place destined to a form of "pollination" of new urban practices that will allow the island on:

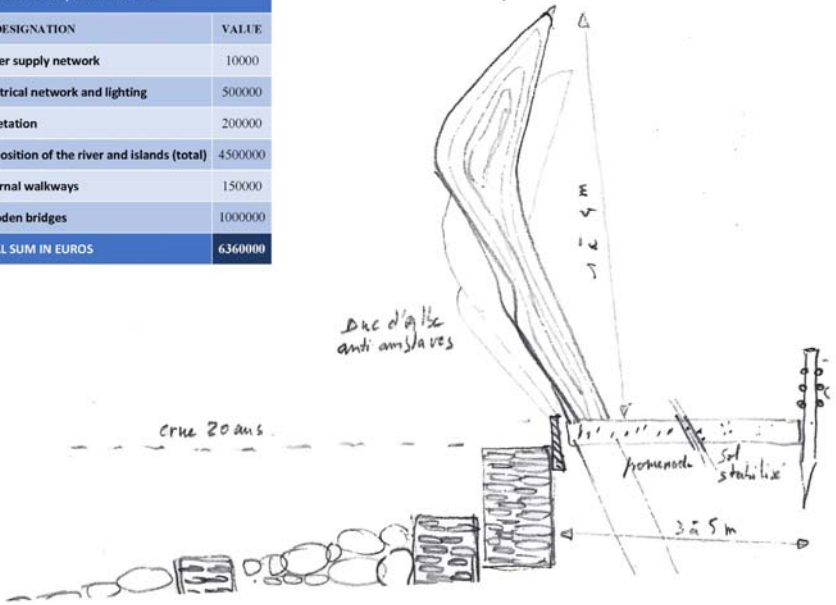
- Sharing intimacy
- The dropping rituals of "padlocks oaths"
- The hanging of sweet words in the statues detours
- Public benches dedicated to whispered conversations
- The quiet listening of smartphones
- The dances and rhythmic open air gym classes
- The observation of wildlife and the initiation of children into bird-watching respect.

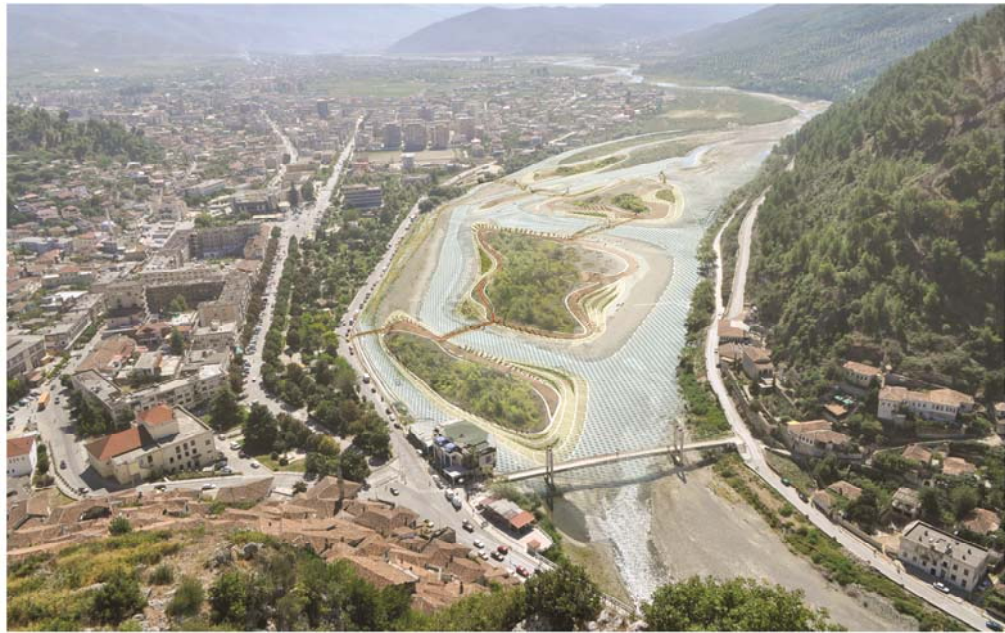


SUMMARY OF THE ECONOMIC ESTIMATION (1st alternative) Osumi island	
DESIGNATION	VALUE
1 Estimation for the water supply network	10000
2 Estimation for the electrical network and lighting	500000
3 Estimation for the vegetation	200000
4 Estimation for the disposition of the river and islands (total)	4500000
5 Estimation for the internal walkways	150000
6 Estimation for the wooden bridges	1000000
<b>TOTAL SUM IN EUROS</b>	<b>6360000</b>

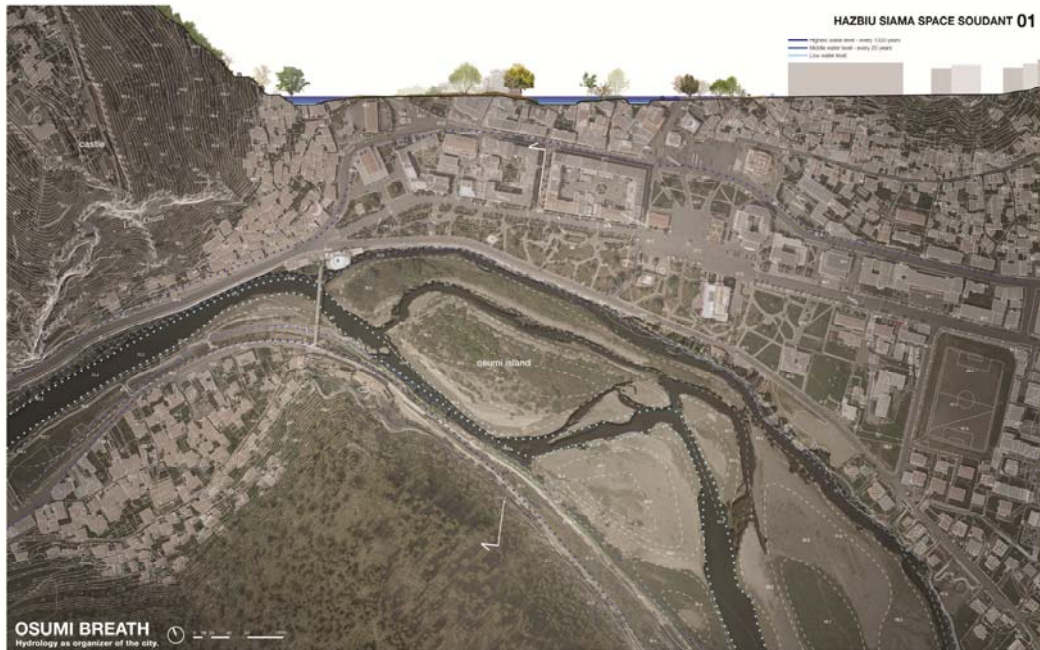
Materials and method of construction

Investments cost estimation





Reduced panels



### OSUMI BREATH

Hydrology as organizer of the city.

The city, surrounded by its gorge and glacial lock site, is looking for a better space as topography suggest, the island is a blessed place, a breath for the former built with. But it is a space in movement, fluctuating at the whims of the river. It is a delicate balance between the vegetation, the bridge, and the hydraulic forces, which result from climate and its variations. The challenge is that how to enable the inhabitants of Berat to benefit from

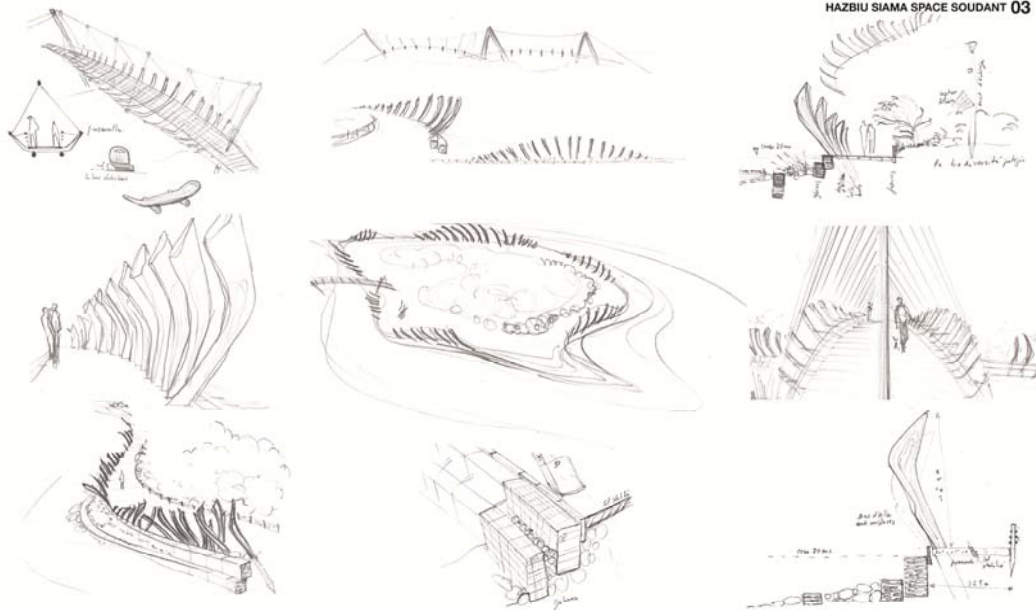
the use of the island, without compromising its ecological quality of being nature, dedicated to walking, to the expression of natural forces? How to organize the resilience of the site without the action of this same resilience (disasters). The values parameters? The offer a medicine that would be able to anticipate, acting proactively, providing a reactive energy, relieving from the surgery that transforms it.



HAZBIU SIAMA SPACE SOUDANT 02

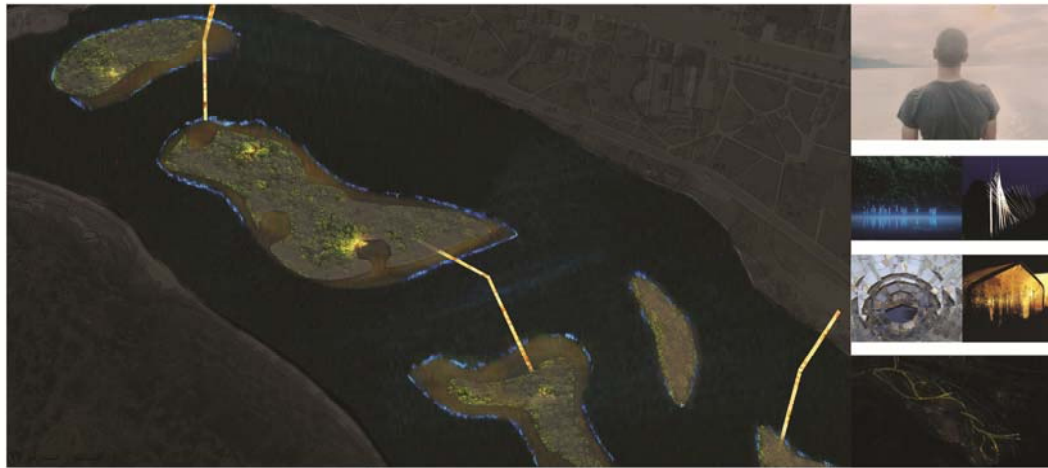


HAZBIU SIAMA SPACE SOUDANT 03



#### HAZBIU SIAMA SPACE SOUDANT 04

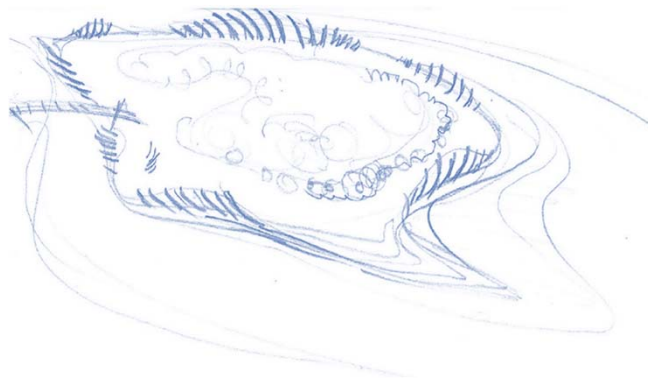
«L'art représente les idées abstraites qu'il a conçues par le moyen de la contemplation pure, il veut être l'essence et le paramètre de tous les phénomènes du monde.»  
Arthur Schopenhauer, Le monde comme volonté et comme représentation







THANK YOU



**HAZBIU SIAMA SPACE SOUDANT**

May 2015