

DESIGN OF A BYPASS ROAD IN UNESCO PROTECTED CITY OF GJIROKASTRA
INTERNATIONAL URBAN DESIGN COMPETITION IN HISTORICAL CONTEXT

GJIROKASTRA ORGANIC LOOP

Competition organized by:

Atelier Albania

The purpose of the competition:

Bypass design of the city's protected by UNESCO, Gjirokastra

The proposal submitted by:

Metropolis (Leader); Polis University; GK Engineering and Cultural Heritage without Borders (CHwB Albania)

MetroPolis
Associated Architects & Planning s.p.a.

**CH
WB**
Cultural
Heritage without Borders
Association since 2008

POLIS
Projecting - Supervising

G & K
Projecting - Supervising

18/12/2015, Tirane

Objective

Methodology

Design Concept

Touristic itinerary

Proposed ring

Infrastructure

Morphology

Public Transport

Parking areas

New Squares

Renders/

Photomontages

Objective

_ Create an **infrastructure system** that connect all the **fragmented neighborhoods** because of the steep terrain

_ Have **minimal intervention in** the historic city, to respect and preserve the historical, cultural and landscape values

– Increasing people' s quality of life through our project

— Having simple regeneration or requalification intervention but with big **benefits** in areas that appear degraded

Methodology

Our proposal seeks to **avoid physical intervention** in central areas and at the same moment the small interventions, will be coherent with the context and with high impact in the requalification process.

A 3D architectural rendering of a city model. The city is represented by numerous grey, block-like buildings of varying heights and shapes, clustered together. A prominent red path or road winds through the city, starting from the top left, curving around a central grey structure, and then extending towards the bottom right. A bridge with a grid-like structure spans a gap in the city, crossing over a blue area that might represent water. The background is a light blue sky, and the overall scene is brightly lit, casting soft shadows.

Objective

Methodology

Design Concept

Touristic Itinerary

Proposed ring

Infrastructure

Morphology

Public Transport

Parking areas

New Squares

Render/

Photomontages

Design Concept

Touristic itinerary

**TOURISM: MAIN REGIONAL ATTRACTIONS**

Design Concept

Touristic itinerary

REGIONAL ITINERARIES PROPOSED



Design Concept

Touristic itinerary

TOURISTIC ATTRACTIONS IN THE OLD CITY

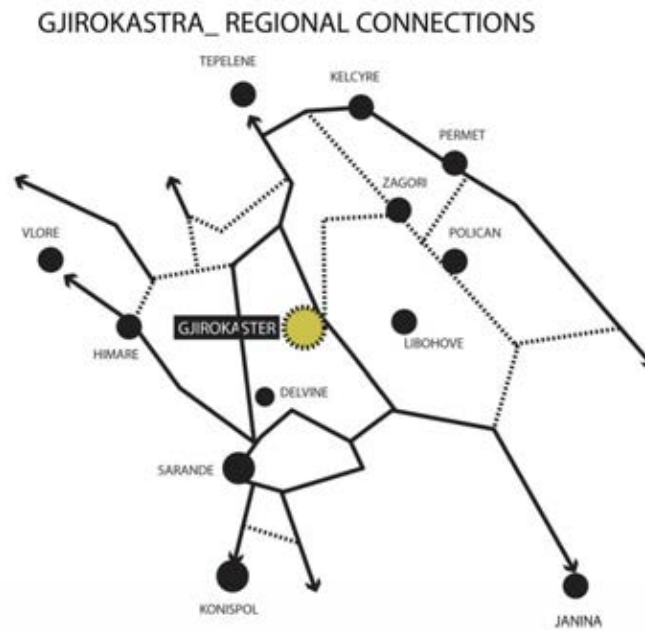


TOURISTIC ITINERARIES PROPOSED



Design Concept

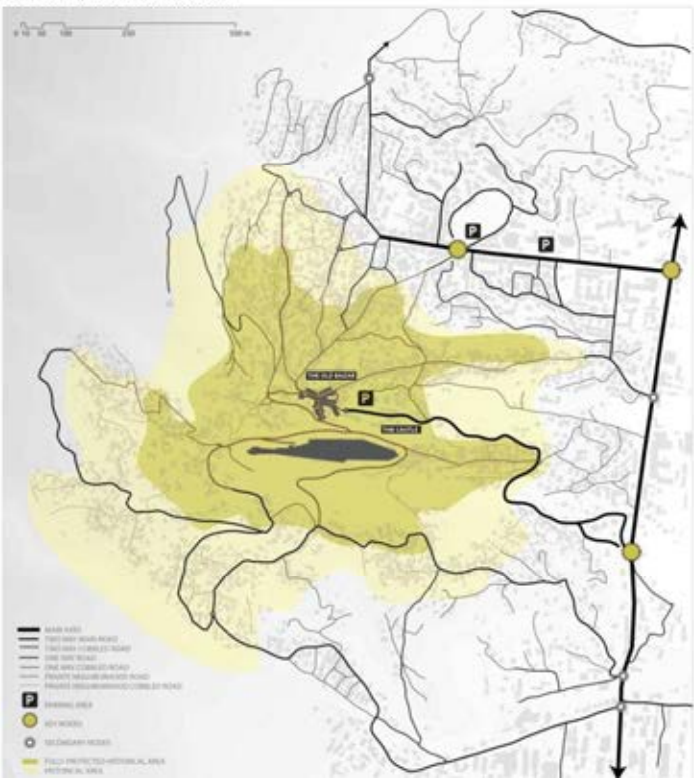
Infrastructu



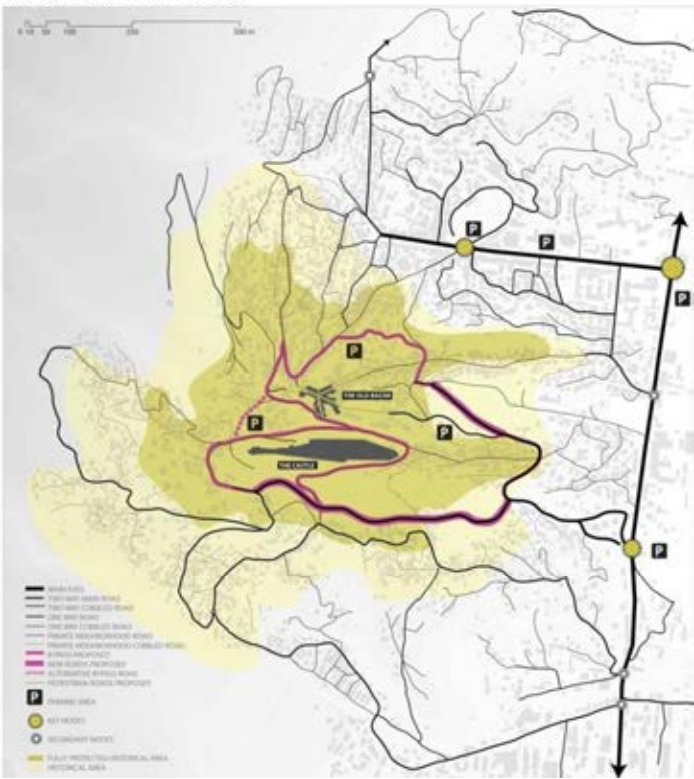
Design Concept

Infrastructure

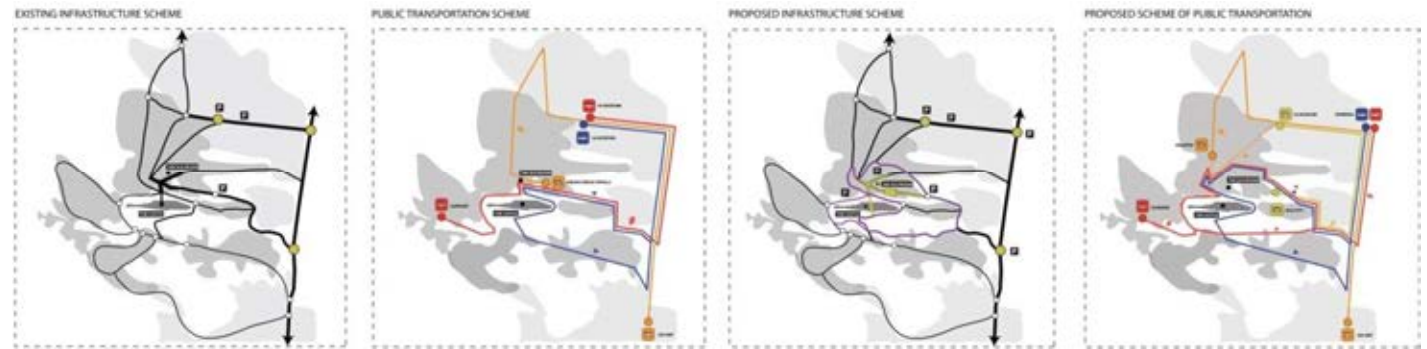
EXISTING ROAD INFRASTRUCTURE



PROPOSED ROAD INFRASTRUCTURE

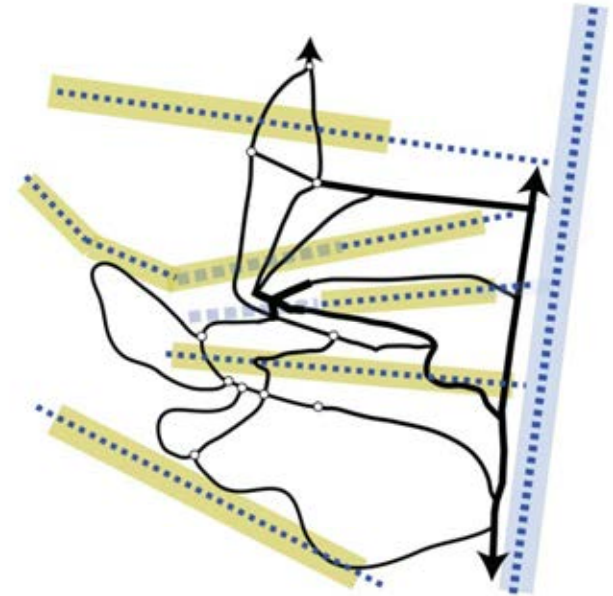


Design Concept



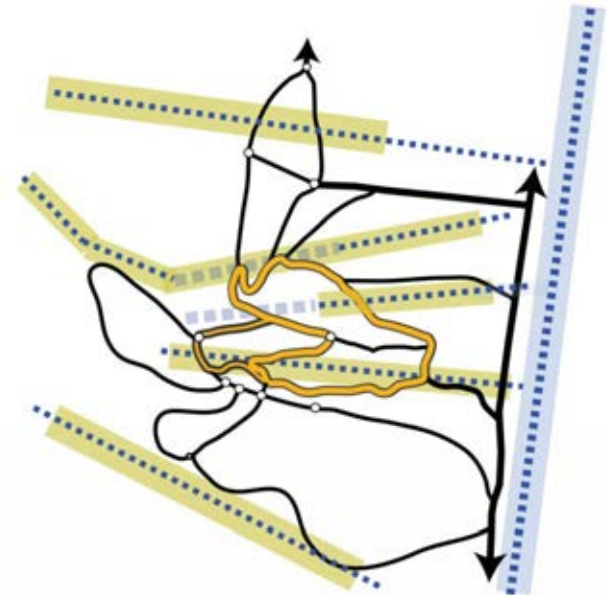
Infrastructure

TOPOGRAPHY , WATER SYSTEM AND INFRASTRUCTURE



Design Concept

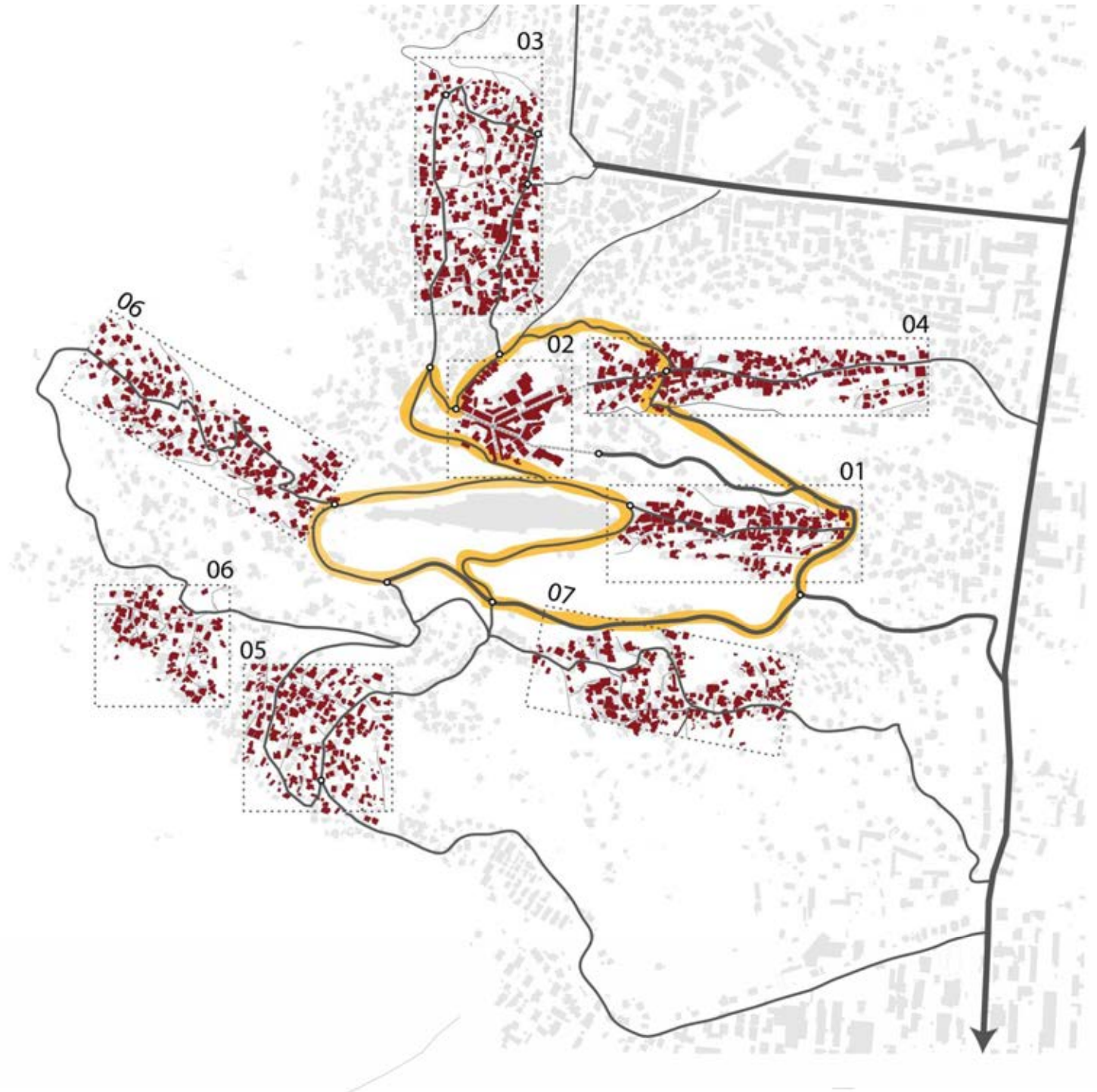
TOPOGRAPHY , WATER SYSTEM AND PROPOSED BYPASS



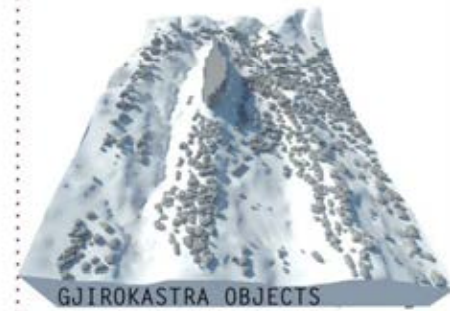
Morphology

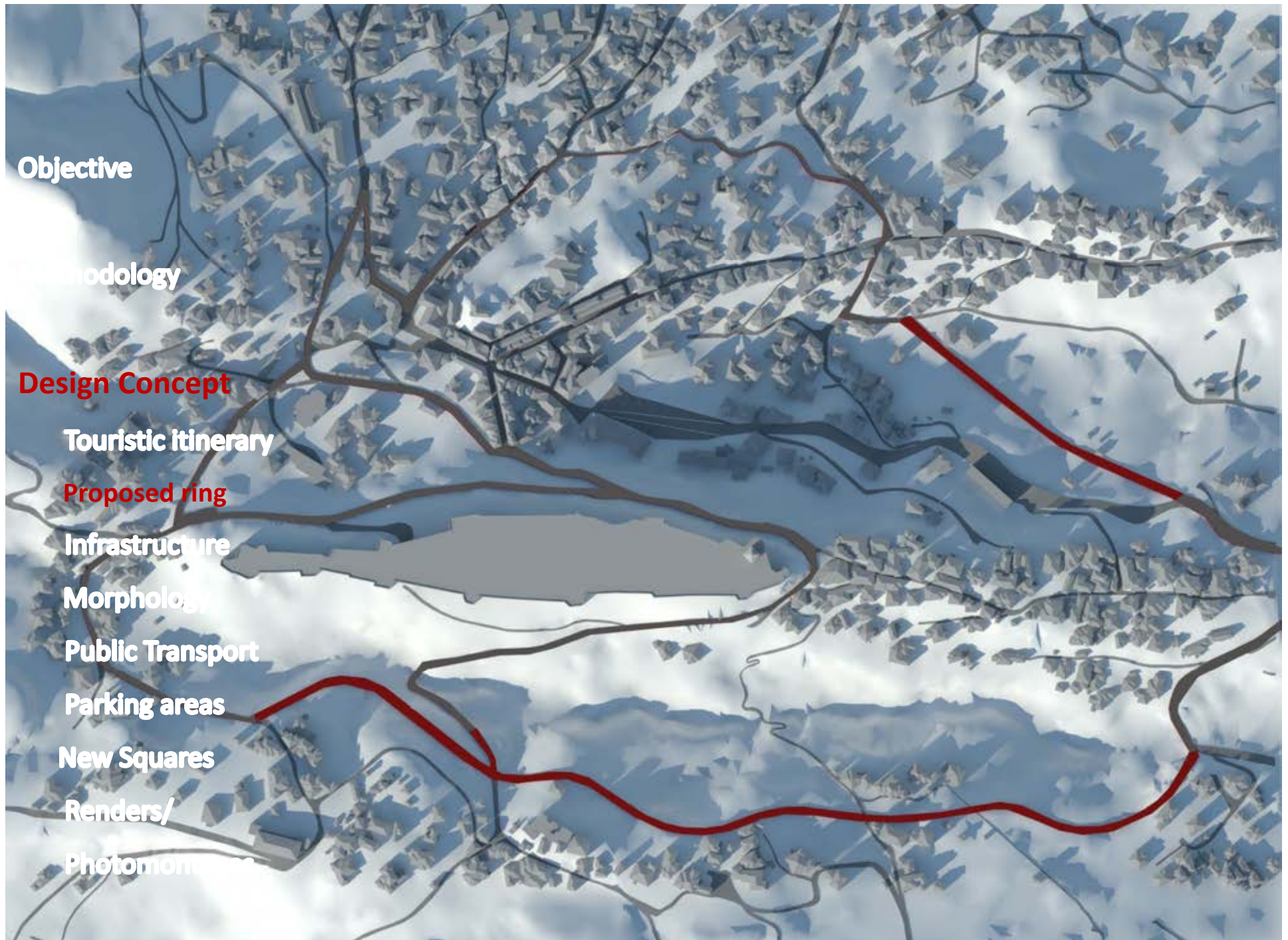
Design Concept

Morphology



Design Concept





Objective

Methodology

Design Concept

Touristic itinerary

Proposed ring

Infrastructure

Morphology

Public Transport

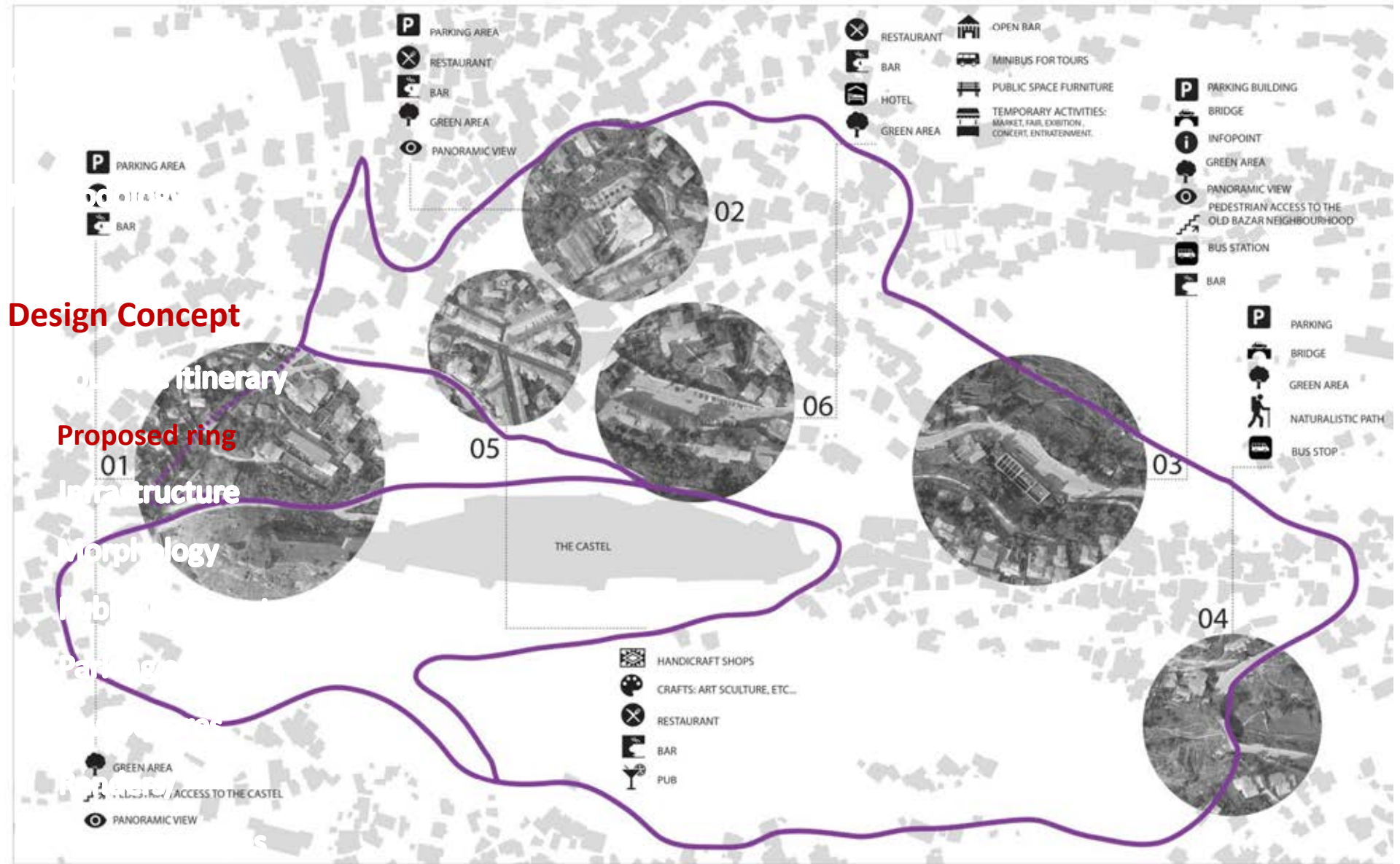
Parking areas

New Squares

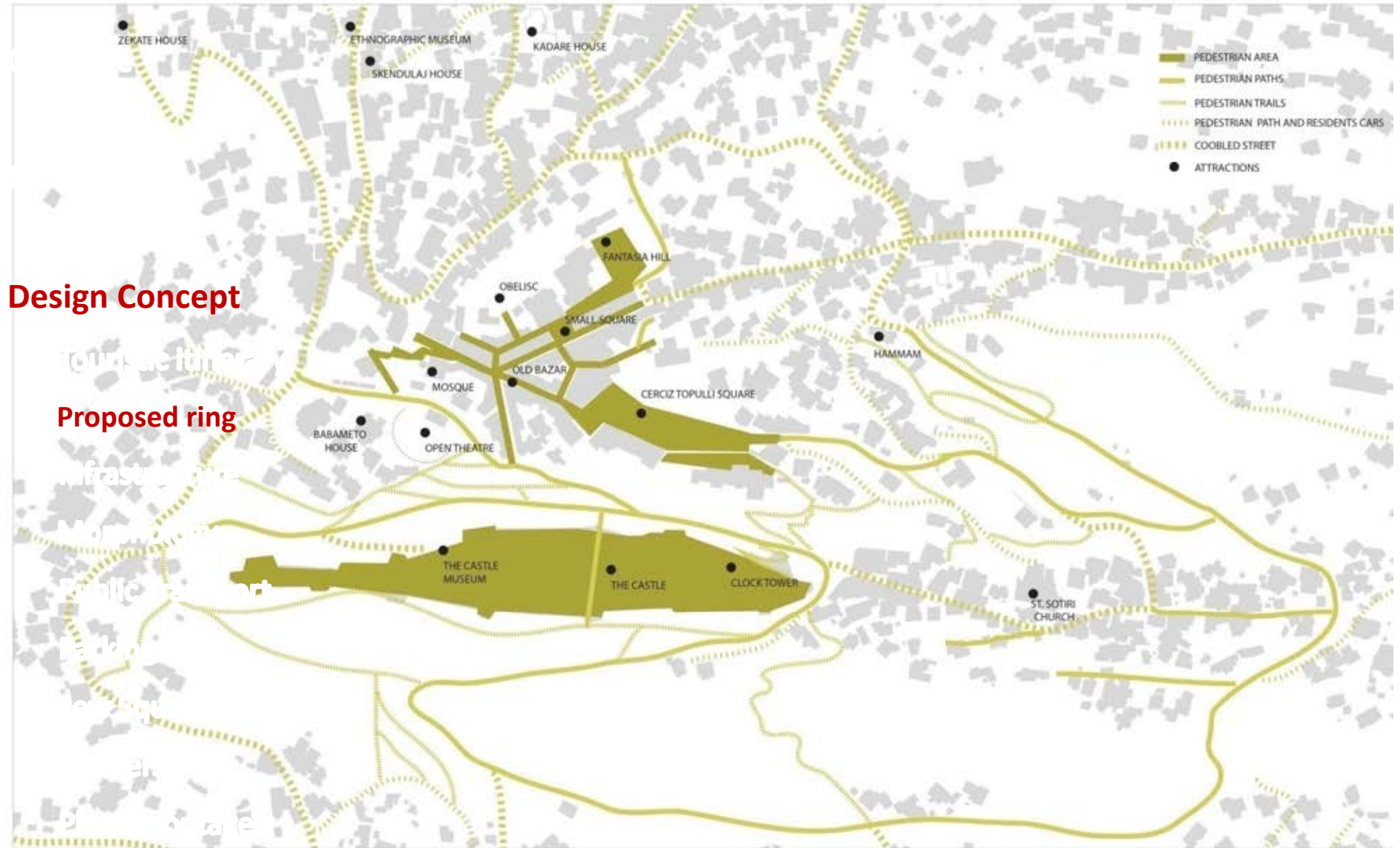
Renders/

Photomontage

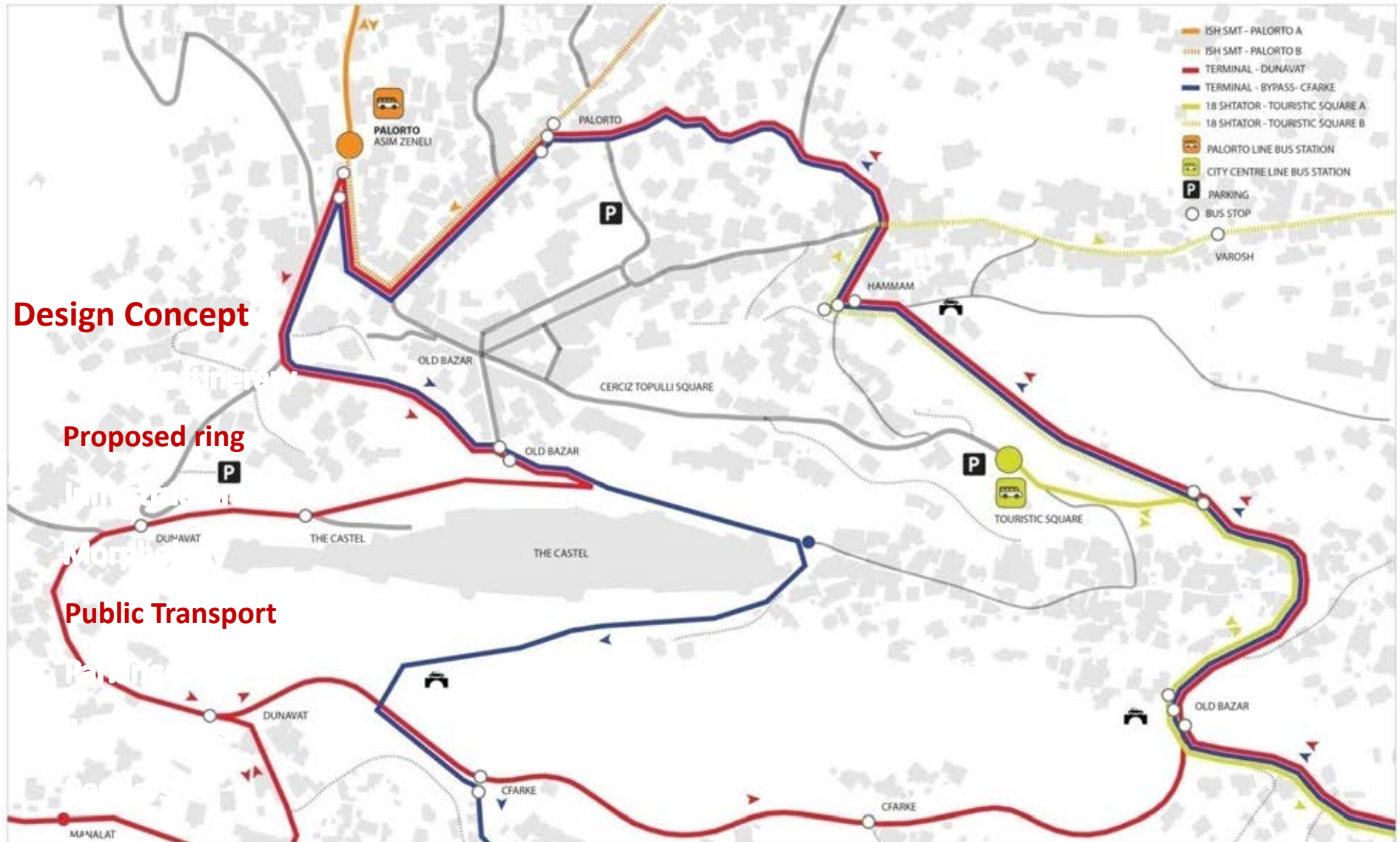
-- ● **BYPASS_** AREAS OF INTEREST AND PROPOSED ACTIVITIES ALONG THE LOOP



-- ● **BYPASS_ GRADIENT OF PEDESTRIAN AREAS**



-- ● **BYPASS_ PUBLIC TRANSPORTATION**



● **BYPASS_ TRAFFIC PLAN**

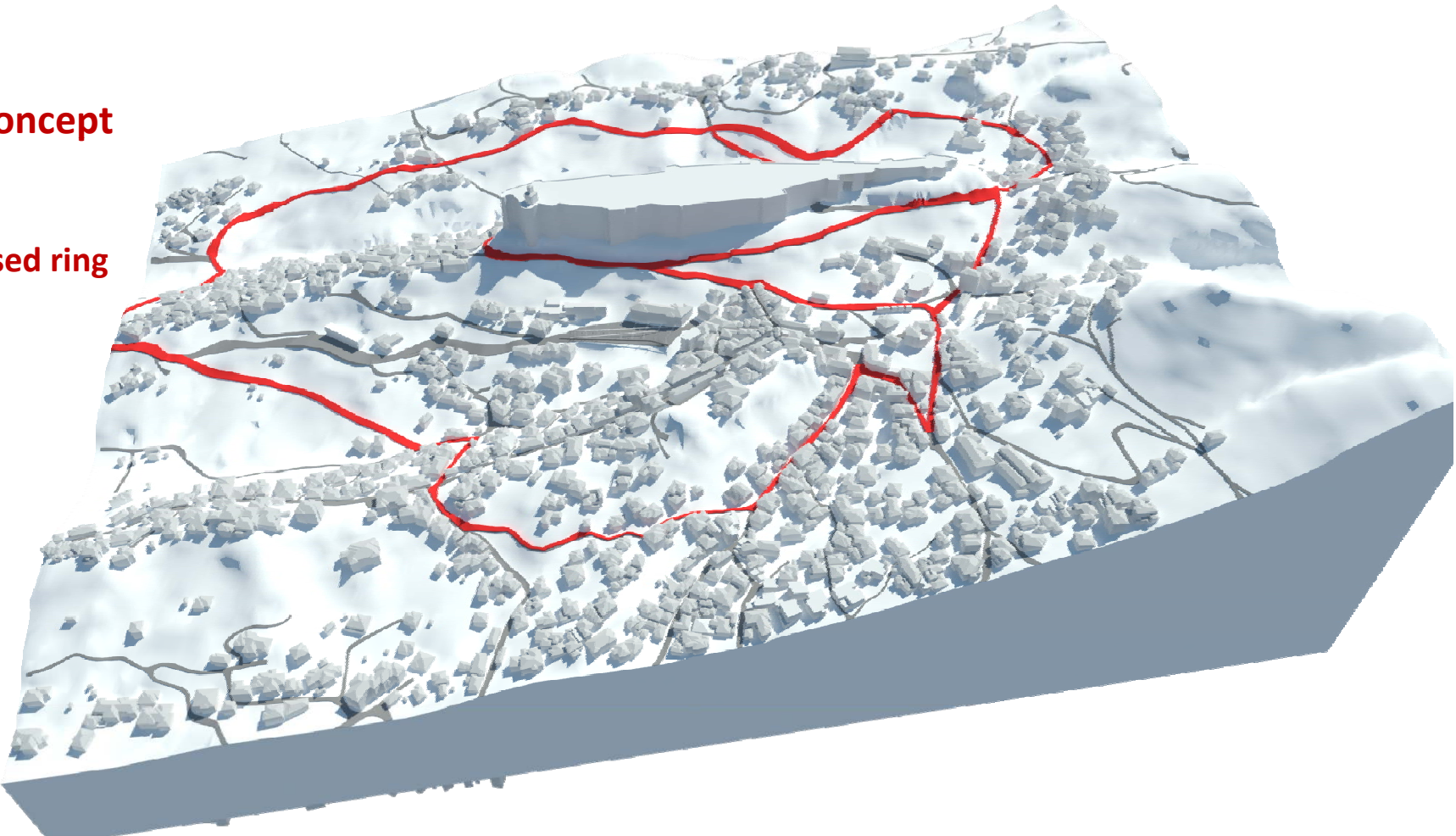


Organic Loop



Design Concept

Proposed ring





CERCITZ TOPII I T SQUARE



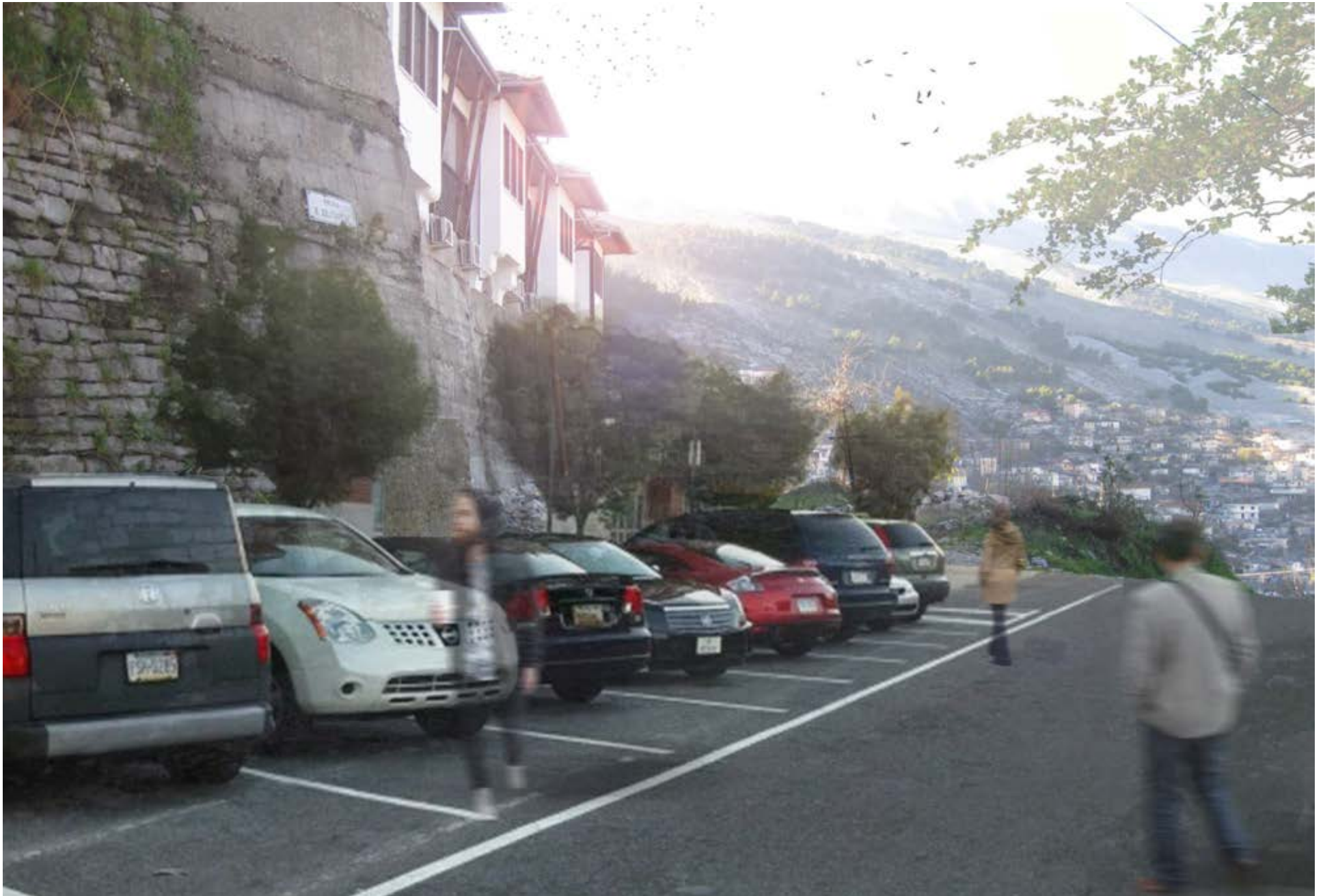
CASTEL PARKING AREA



Çerciz Topulli square



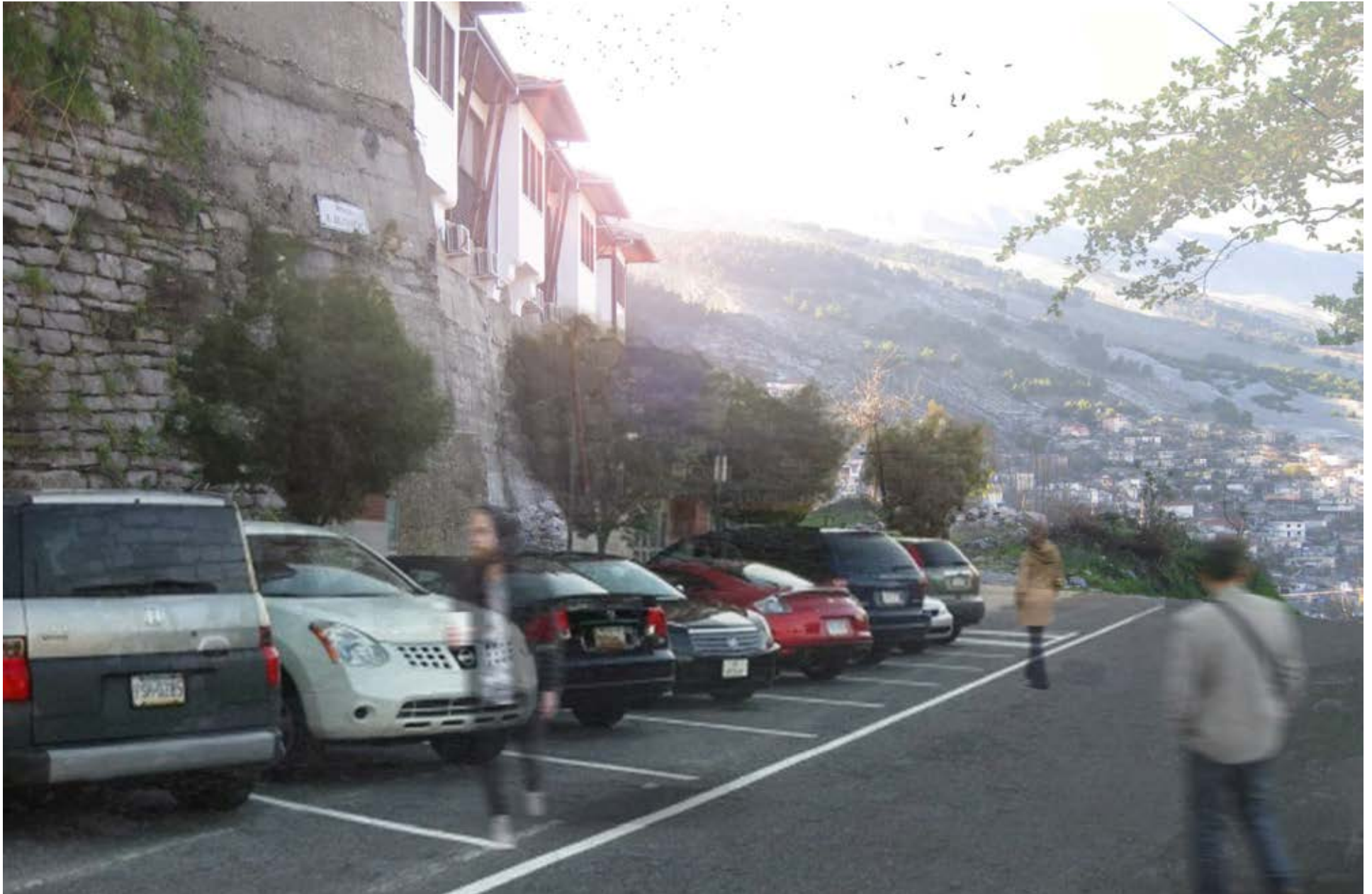
The square near the castel



Agency



Fantazia Hill



Consortium

METROPOLIS l.t.d, is an Albanian architecture, planning, and urban and landscape design practice established in 2007. The firm was created based upon the long tradition rooted in the early '90s to the city planning activities of a civil society organization, active in planning and development projects in the formal/informal areas in the Tirana's suburban area. The team brings together talented experienced architects, interior designers, and town planners, who operate on multiple scale projects, from large-scale international design competitions and projects to small interior design assignments.

POLIS University -International School of Architecture and Urban Development Policies - is a young and ambitious and engaged high education institution, quality research-led university, supporting a focused range of core disciplines in the fields of architecture, urban planning, design and environmental management, establishment in 2006.

CHwB, Cultural Heritage without Borders, is an independent Swedish NGO dedicated to rescuing and preserving cultural heritage affected by conflict, neglect or human and natural disasters. The organization was founded in 1995, while CHwB office in Albania has started in 2010.

G&K Studio, is a company established in September 2004. Since its beginning this company was engaged in the field of design and supervision of road infrastructure, water supply, supervision and project commissioning. The Experience, equipment, human resources and the information available to the company, has allowed it to have a full position of advantages and has made it a collaborator available to any institution, Albanian or foreign companies which plan to execute project contracts and supervision in the Albanian market, as a partner or joint venture company (JV). The company continues to increase the qualified personnel, therefore it has established a team of well-organized specialists and engineers alike in the fields of construction and electricity.

Design Team

Dorina Papa (Polis University) _ Architect and Landscape Designer

Etleva Dobjani (Polis University) _ Architect and Landscape Designer

Llazar Kumaraku (Polis University) _ Architect and Urban Designer

Sonia Jojic (Polis University) _ Art Designer

Elena Mamani (CHwB) _ Architect specialized in architecture restoration and preservation in Gjirokastra

Dilaver Oshafi (G&K) _ Infrastructure Engineer

Spartak Tumani (G&K) _ Constructor Engineer

Egzon Gacaferri (intern Metropolis/Polis Student) _ Architect and Design

Luard Halili (intern Metropolis/Polis Student) _ Architect and Design

Kristina Rexhaj (intern Metropolis/Polis Student) _ Architect and Design

Mikel Tepelena (intern Metropolis/Polis Student) _ Architect and Design

Xhoana Kristo (Polis Student) _ Architect and Design

Erazmia Gjikapulli (Polis Student) _ Architect and Design

An aerial photograph of a mountainous region covered in snow. A network of brown lines, likely roads or trails, crisscrosses the terrain. A prominent red line is drawn across the map, starting from the upper right, curving down, and then extending horizontally across the lower half. A grey, irregular polygon is overlaid on the map, centered around a small lake or valley. The text "Thank you!" is superimposed on the map, underlined.

Thank you!