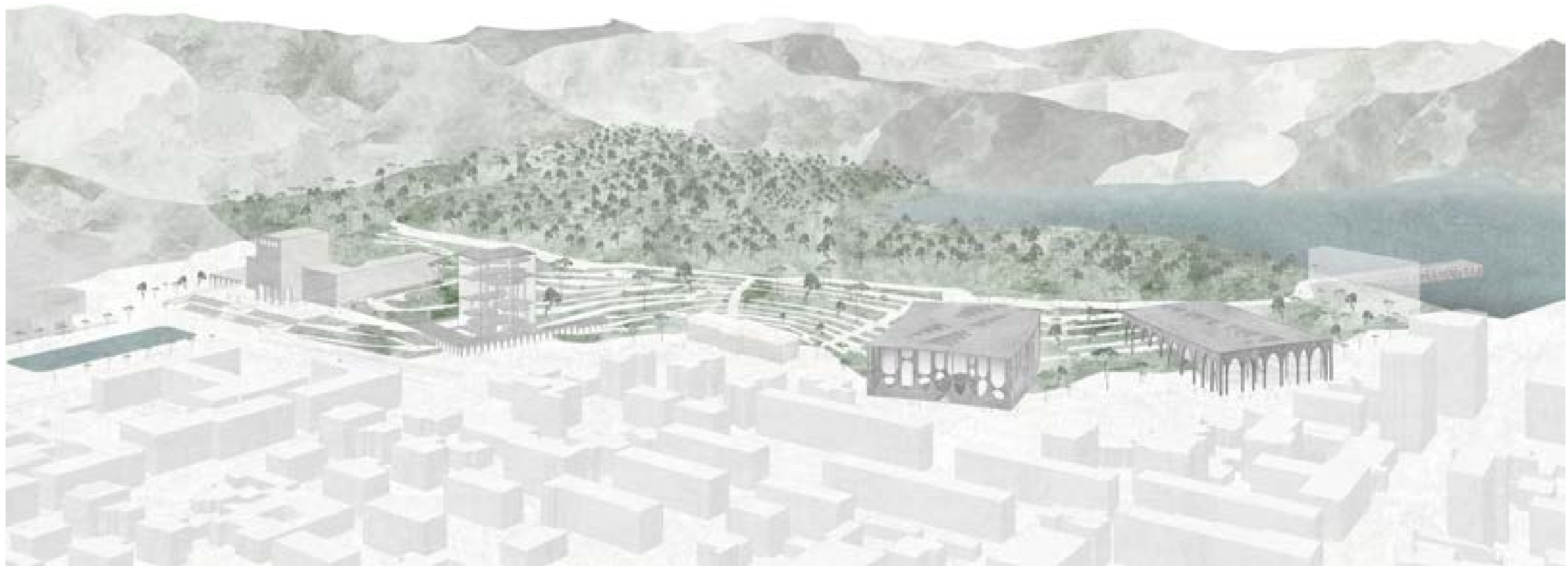


TIRANA PARK ENTRANCE

THE NEW THRESHOLD BETWEEN CITY AND PARK





THE TRANSITION - FROM CITY TO PARK

The development of the area between the city of Tirana and the Madh Park holds a great potential of creating a new physical urban landscape where the inhabitants of the city can meet in a human scale environment. From being a border between the everyday city life and the green recreational park life – the area will be transformed into what we call a “threshold”, a spatial transition not only urban neither only recreational. At the same time the new threshold

creates a connection from the Mother Theresa Square to the Lake. This way the threshold becomes a mental transition from the past towards the future as a democratic gesture for the people of Tirana.



AERIAL VIEW OF TIRANA



THE PUBLIC THRESHOLD - HARD SCAPE + SOFT SCAPE

Placed on a mountain slope the public threshold is created by combining two different languages: The soft scape of the park and the hard scape of the city. In This way merging the best qualities from the two different worlds into one.

Soft scape – the language of the park with greenery, tall trees and wood.

Hard scape – the language of the city with hard surfaces, stones and photocatalytic concrete: materials and technologies

available, durable and easy to maintain.

Combined the new languages of the public threshold offers various possibilities for new activities to take place. Through inventive and innovative interpretations of the two more classic typologies the new public threshold contains a great potential to develop its own unique language physically expressing the future public life of Tirana.



LANDSCAPE REFERENCE BY SLA ARCHITECTS



AN OPENING AND A CLOSURE

The buildings that are placed in this threshold contribute with their volumes to create squares and volumetric rhythm along the edge of the threshold. The sequence of those buildings is carefully related to the needed functions in a way that the building contributes to the public life being themselves an active part of the threshold. On both sides of the existing university, enhancing and emphasizing the axiality of the beautiful existing building, the new university administration office will be placed and the new university facilities will be formed as a totally integrated building in the landscape. The threshold is initiated by a new transparent mediatheque emerging out of the university building. The mediatheque offers a new program and a new functionality both for the university and the public life. The new volume of the mediatheque is mirroring the front volume of the existing university and thereby introducing the entrance to the public threshold. Between the mediatheque

and the new building of the police department a new city square will be created around the renewed police museum, the rest of the buildings will be pulled down in order to create a clear special relationship between the mediatheque the museum and the police department. Along the public threshold then we will place the public service. The sequence of all the buildings will make sure that public life will span from Mother Theresa's square along the Madhe Park, including in a natural way the new Olgia's office building, towards the lake. Through the public thresholds the buildings are situated with care for the public life and attention to the human scale. At the end of the threshold we propose a new public bathhouse situated on the edge of the lake creating an ending point for the all threshold and utilizing the water as a recreational resource for the people of Tirana.



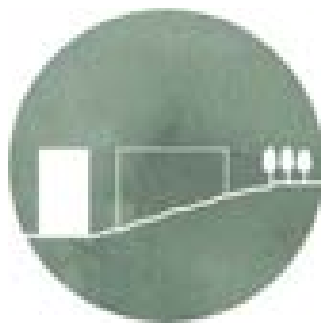
VELOCITIES - FAST VS. SLOW

The Public threshold contains two different kinds of movement. A fast direct movement from the city to the park and a slow movement for enjoying a more recreational stroll. Across the threshold 7 big stairs brings the people directly from the level of the city to the level of the park. Some of the stairs are outdoor stairs open 24 hours a day as gates to the park. Other stairs are inside the new buildings creating a possible movement through the volume from the city to the park. Stairs

are not the only access to the park. Along the public threshold the new landscape is shaped as ramps creating a slow movement from the city level to the park level. The ramps make it possible to climb the small mountain slope with bikes and prams and at the same time increase the accessibility for the disabled. Once on the upper edge of the threshold, also the long recreational stroll creates multiple possibilities for pauses along the route and other diverse recreational activities.



STAIRS AND RAMPS BECOMES A LANDSCAPE



A HUMAN SCALE

Because of the way the buildings are placed in the new public threshold they act as mediators between the big scale of the city and the small scale of the park - linking the two together. In this way the new volumes become recognizable in both areas, ensuring tranquility in the transition between them. The mediator introduces a human scale between government and civic life – creating generous public spaces connecting to the city and the park.

The design is deeply rooted in a Scandinavian tradition where the public spaces are treated with a high degree of dignity, quality in the selecting materials and an understanding of creating physical form serving the democratic public life.



THE STEPS BECOMES AN AUDITORIUM IN THE INTERIOR
ANNA MARIA INDRIIO



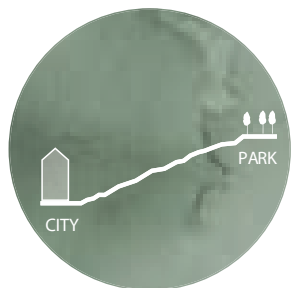
THE ARCH - TRANSFORMING THE ARCH ACCORDING TO FUNCTION

The buildings are not only mediators. They are also attractors because of their appearance and their architectural performance. As a design parameter for creating an expression of the different buildings we have tried to find a “motive” that’s recognizable for the area and its context. We have chosen to work with the classical arch as a creative obstruction. Not copying the arch but using it in new ways. In this way each building obtains a different recognizable look due to its function but

within the same spatial pallet. Arches are used as a structure, which carries both the floor plans of the buildings as well as the large roof, naturally ventilated below. This roof creates a shade for the transparent interior ensuring comfort and nice working environment in the offices, views to the threshold and a beautiful spatial expression. In this way the new language of the arc achieves a three-layered purpose: Structure, Shade and artistic contextual reference.



ARCHES CREATES THE STRUCTURE AND THE SPACE
TOYO ITO ARCHTIECTS



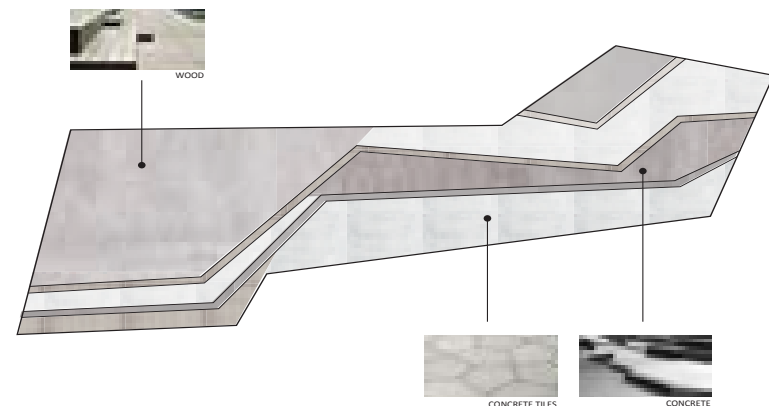
THE TRESHOLD - HARD SCAPE TO SOFT SCAPE

Placed on a mountain slope the public threshold is created by combining two different languages: The soft scape of the park and the hard scape of the city. In this way merging the best qualities from the two different worlds into one.

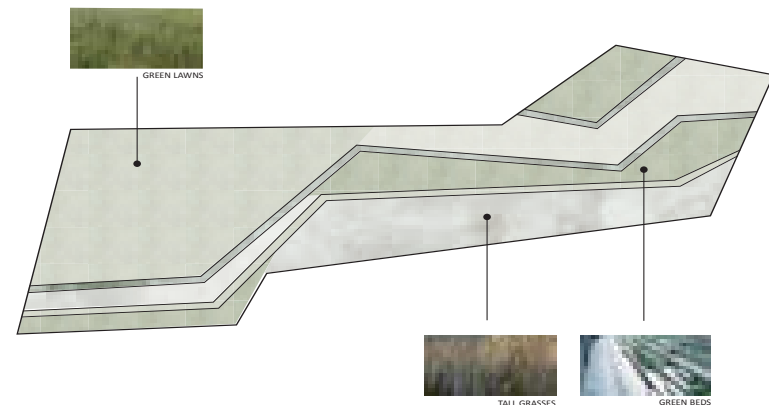
Soft scape – the language of the park with greenery, tall trees and wood.

Hard scape – the language of the city with hard surfaces, stones and photocatalytic concrete.

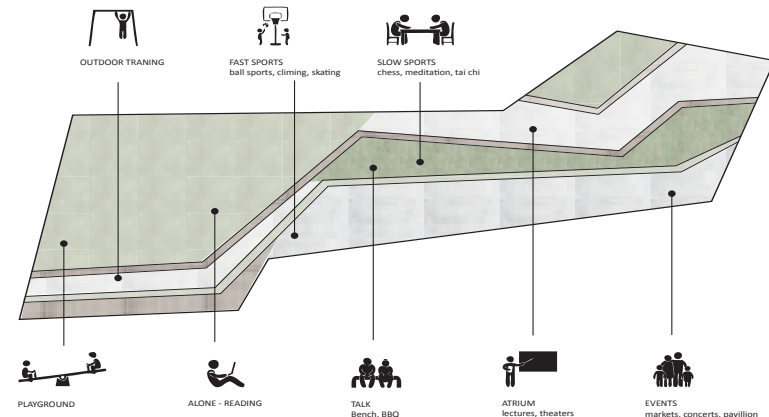
HARD SCAPE - THE LANGUAGE OF THE CITY



SOFT SCAPE - THE LANGUAGE OF THE PARK



ACTIVITIES - MEETINGS AND PARK ACTIVITIES



SITE PLAN



BUILDING APPROACH

THE MEDIATHEQUE & LIBRARY

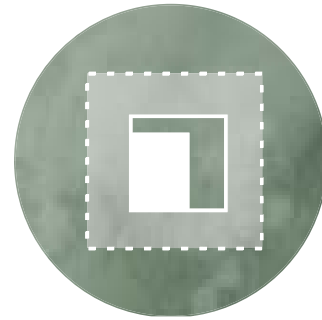


The threshold is initiated by a new transparent building, dedicated to a mediatheque & library, emerging out of the landscape and of the university building.

The mediatheque & library is a mixed-program public facility which combines library and university facilities.

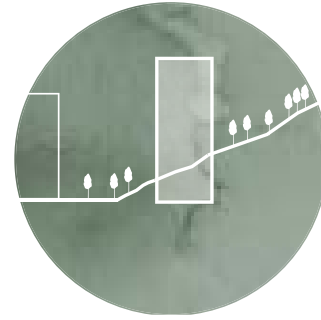
The building is composed of three main elements: arches, plates and skin.

Arches are used as a structure, which carries both the floor plans of the buildings as well as the roof, naturally ventilated below. Each floor is a round plate visually and physically connected with all the others, creating an inner dynamic.



The mediatheque & library building offers a new program and a new functionality both for the university, public life and citizen:

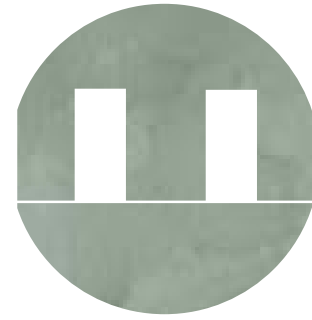
- basement: parking area easily accessible from Parku i Madh street;
- ground floor: information desk, café, canteen, outside spaces for visitors and reading rooms.
- first - third floor: library and reading rooms, - fifth -seventh floor: mediatheque and study spaces.



Around and through the new mediatheque & library building is possible to enjoy both different kind of movement:

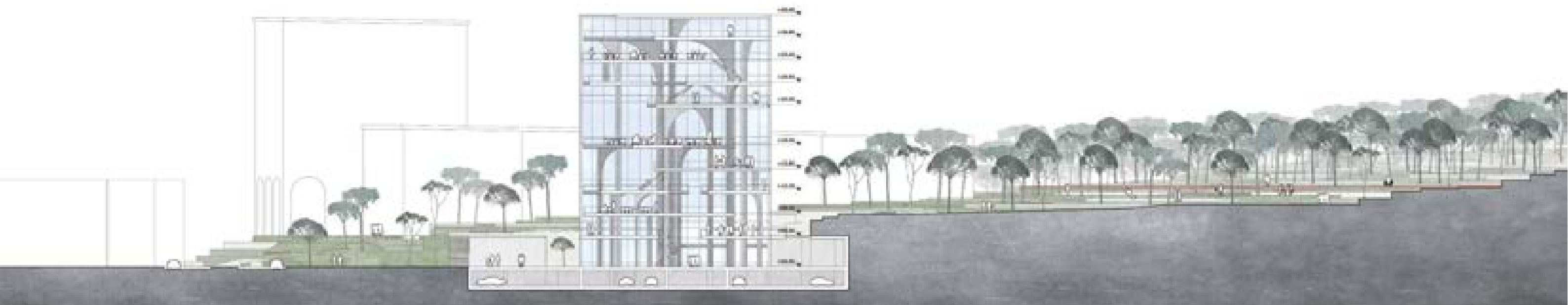
Passing through the building, people can directly walk from the level of the street (where there is the city entrance) to the level of the park.

Meantime, along the public threshold the new landscape is shaped as ramps creating a slow movement from the city level to the park level. Ramps and stairs make it possible to climb the small mountain slope with bikes and prams and at the same time increase the accessibility for the disabled.

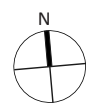


The new volume of the mediatheque & library is mirroring the front volume of the existing Polytechnic University Building as an open and transparent twin.

The building share with the Polytechnic the same level of the access (+5.00 m). In this way, both buildings are connected thanks to the new threshold of the Park through paths, green areas and activities spaces

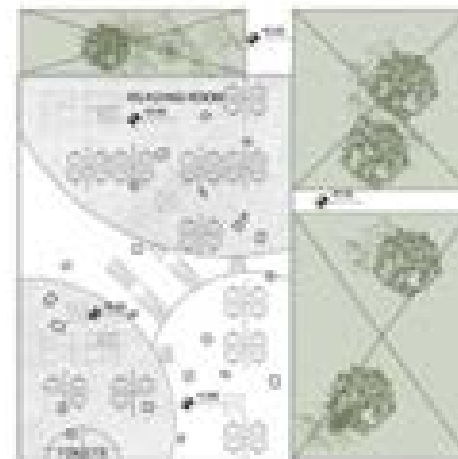


THE MEDIATHEQUE - SECTION BB

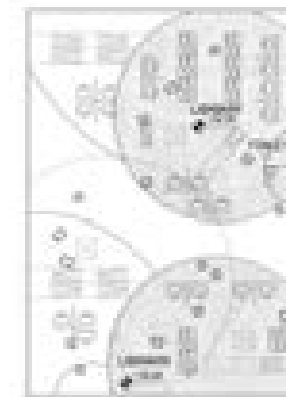


MEDIATHEQUE - GROUND FLOOR
3120 M²

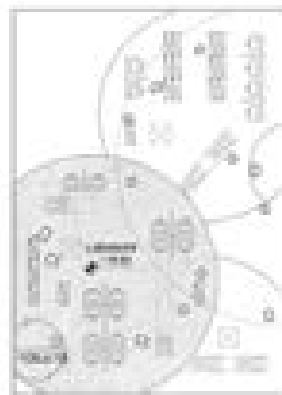
THE MEDIATHEQUE & LIBRARY



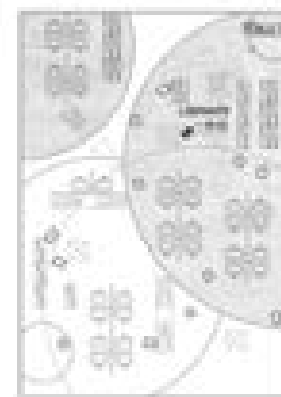
MEDIATHEQUE - 1 FLOOR
432 M²



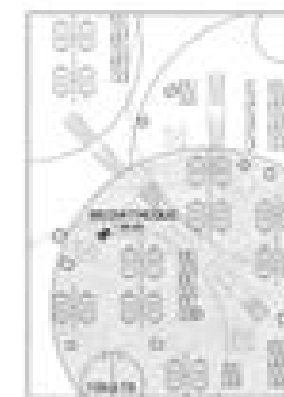
MEDIATHEQUE - 2 FLOOR
358 M²



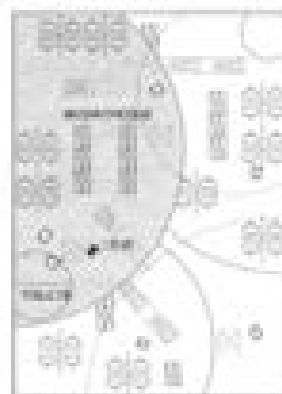
MEDIATHEQUE - 3 FLOOR
266 M²



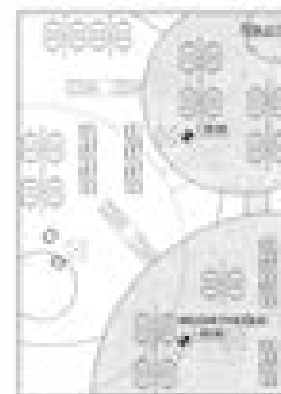
MEDIATHEQUE - 4 FLOOR
360 M²



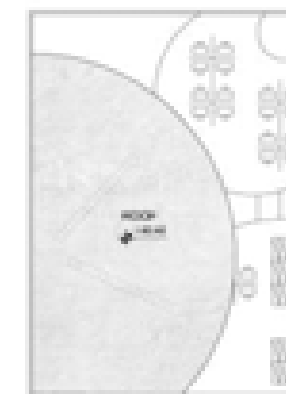
MEDIATHEQUE - 5 FLOOR
350 M²



MEDIATHEQUE - 7 FLOOR
280 M²



MEDIATHEQUE - 8 FLOOR
335 M²



MEDIATHEQUE - ROOF
335 M²

THE MEDIATHEQUE & LIBRARY



VIEW OF THE OLD TOWER OF THE UNIVERSITY AND THE NEW MEDIATHEQUE

THE GENERAL DIRECTORATE OF STATE POLICE



The new general directorate of the state of police is a very important building for the city of Tirana and for the entire nation. As such it demands to communicate different stories .It is democratic, but at the same time secure - it is iconic, but on the same time a modern functional and flexible office building - it is prestigious, but efficient and sustainable. It needs to give the message of a welfare future for the nation and the city taking care of its citizens and on the same time of the economy of means.



We have therefore created an extrovert building formed as a four armed star were we have given maximum care to the employees, all viewing the city and the park. This simple and rational office building develops along a cross plan with atriums on each side of a middle section containing common vertical and horizontal communications lines and services. The offices are totally flexible and clearly to be furnished in different ways. It is a democratic building where all users can meet each other in the central space both horizontally and vertically.



Departments can be assembled together by internal corridors with a variety of common and single offices. The “star” is inscribed under a big roof standing on a plinth, which follows the couture of the roof. The roof is carried by a structure of arches, stabilized by a system of perpendicular secondary structure.



The big roof provides not only an efficient shadow protecting offices and amenities area for the employees, but also defines personality for the building and security protection to the facade. The plinth is an efficient physical distance keeper but the layers of arches mitigate this otherwise hard expression and transform the building in a poetic environment where light and shadows plays an important role. In this way the building act as an “attractor” defining the site, connected to the new public threshold.

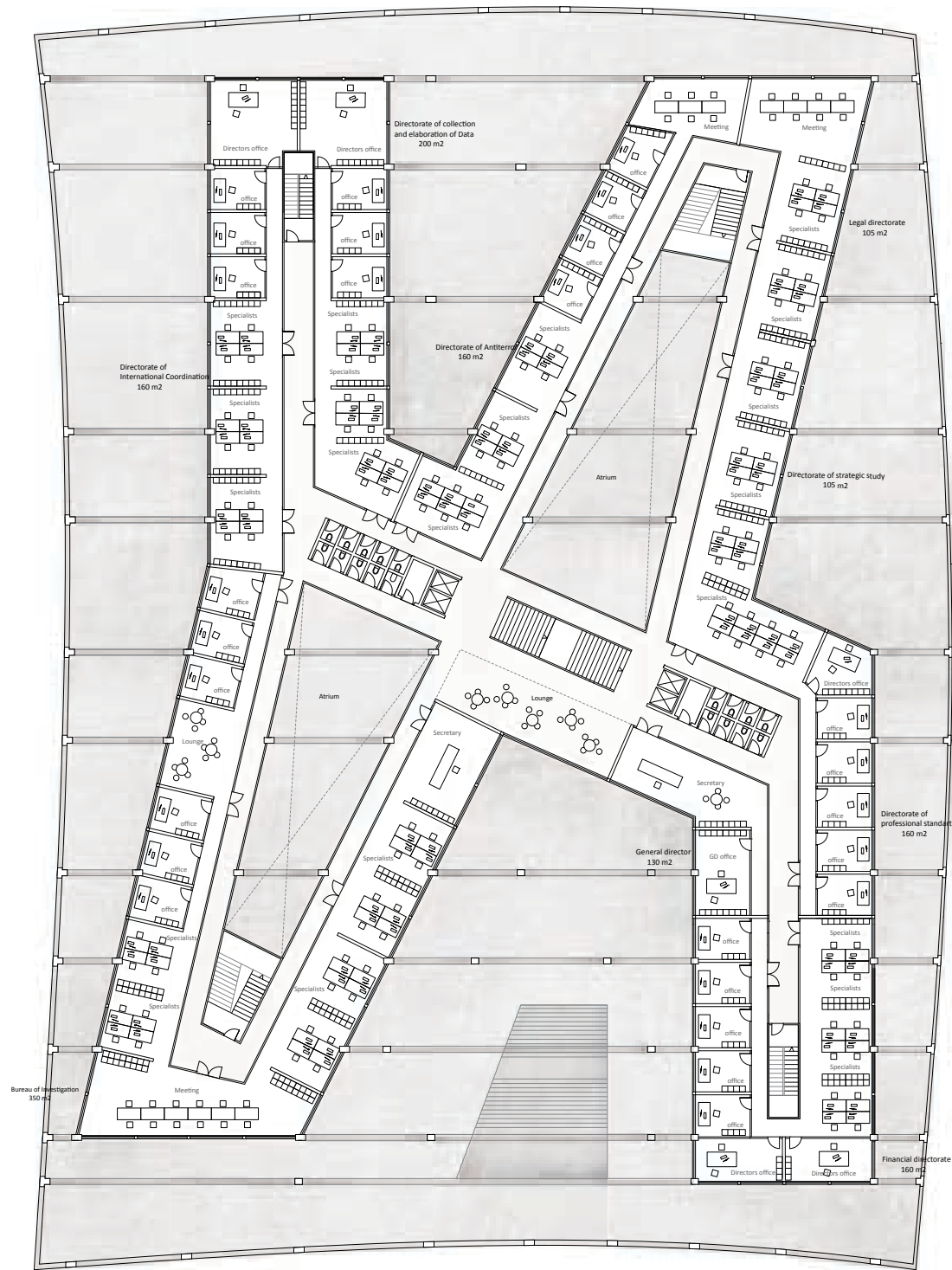


GENERAL DIRECTORATE OF STATE POLICE - SECTION CC

THE GENERAL DIRECTORATE OF STATE POLICE



VIEW FROM THE COLLONADE AROUND THE GENERAL DIRECTORATE OF STATE POLICE



POLICE STATION - 2 FLOOR 2200 M2

THE GENERAL DIRECTORATE OF STATE POLICE

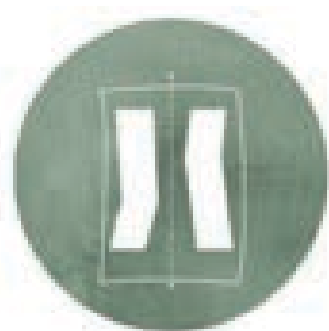


EXTERIOR VIEW SEEN FROM THE PATH AT THE TOP OF THE THRESHOLD OVERLOOKING THE GENERAL DIRECTORATE OF STATE POLICE

THE PUBLIC SERVICE CENTER



The public service mall will be seen together with the police building. Twisting the two buildings, a new city square appears and establishes the new threshold to the park. The motif of the arch is now reversed and the public services mall open towards the square and the city on all sides. The building invites the citizens in and reveals what is going on its inside.



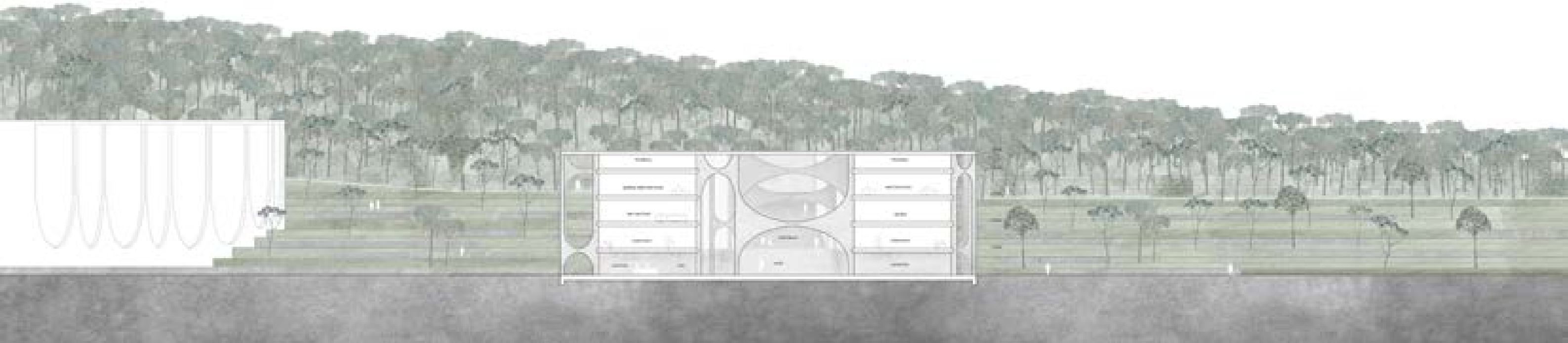
The public can choose just to step inside and experience the beautiful atrium while climbing to the park. On each pause the publics will meet the front offices of each department and the waiting areas facing the life that unfolds in the atrium. On especially occasion the atrium can be transformed in cinema, dancehall, meetings hall and other public performance activities. Because the atrium is a protected environment in all seasons it can, depending on openings hours, function as a street environment.



The atrium spatial feeling is astonishing. The prospective, as in a Piranesi renaissance drawing, will change all the time, creating a spectacular sequence of crescendo of rooms. The atrium culminates on the level of the park, where inside and outside space melt together. The big roof is also protecting the very transparent glass building from solar impact, creating the necessary shade.

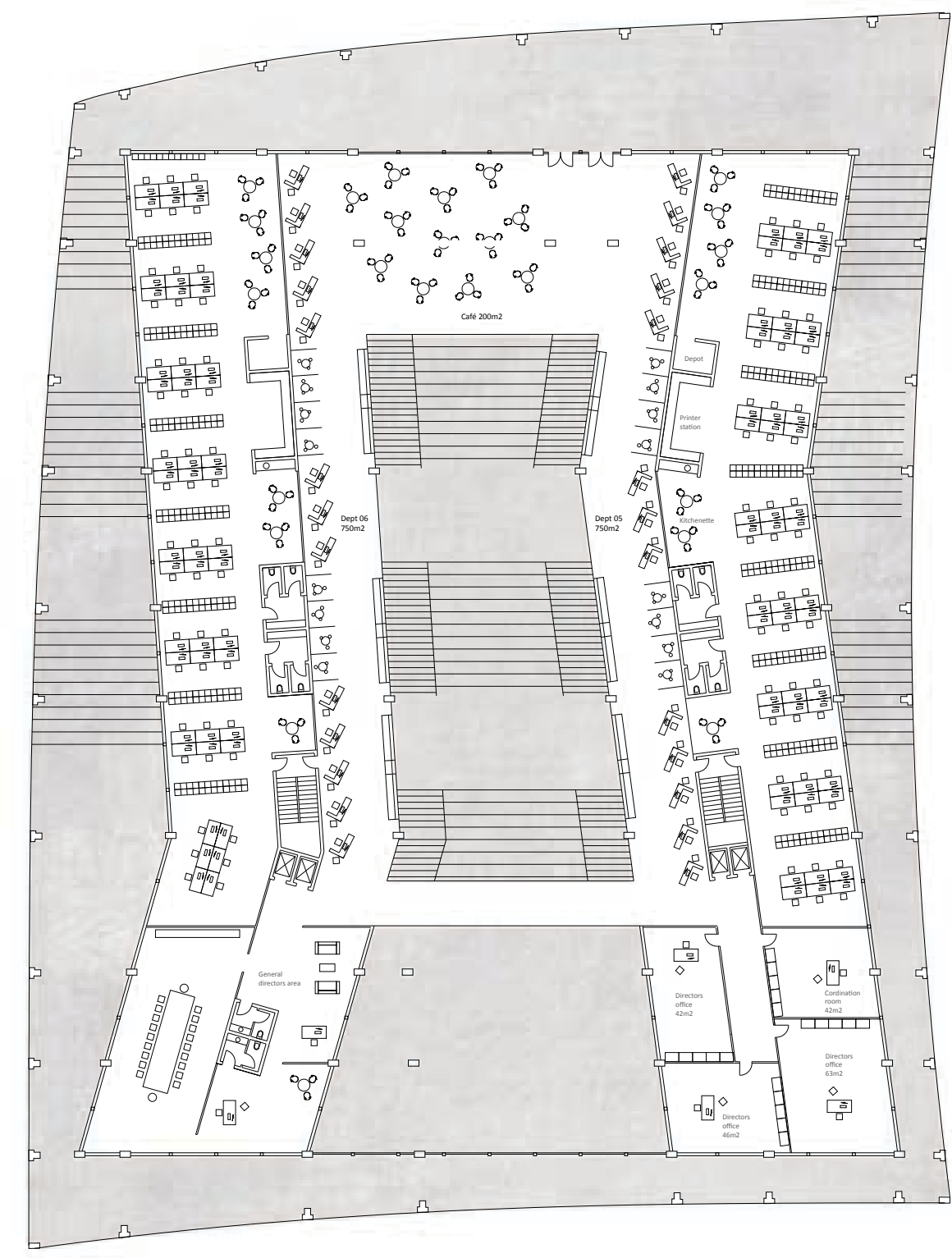


The stairs follow the slop inside and outside climbing to the level of the park. The walk under the arches inside and outside along the building will be an astonishing architectural experience, as a cathedral of democratic modernism.



PUBLIC SERVICE CENTER - SECTION DD

THE PUBLIC SERVICE CENTER



PUBLIC SERVICE BUILDING - 3 FLOOR
2170 M2



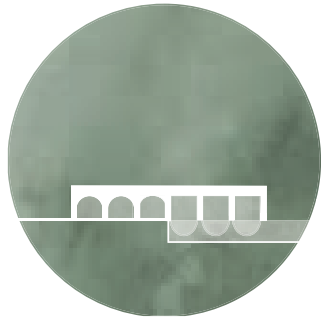
INTERIOR VIEW FROM THE BIG COMMON STAIRWAY IN THE PUBLIC SERVICE CENTER

THE PUBLIC SERVICE CENTER

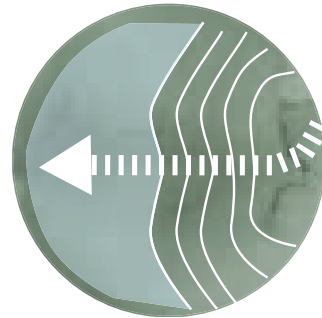


EXTERIOR VIEW - THE ARCHES OF THE POLICE STATION AND THE PUBLIC SERVICE CENTER FRAMES THE PUBLIC THRESHOLD IN BETWEEN - CREATING A SMALL SQUARE FOR EXHIBITING SCULPTURES

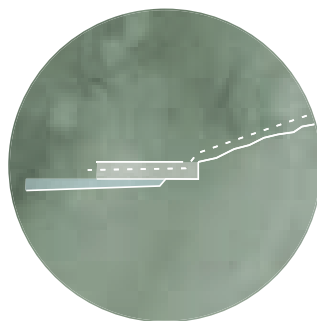
THE BOAT HOUSE BUILDING



The boat house building, with the recognizable arcs, become the attractor element on the lake. The arcs are used as a structural element that define the shaded activities space and the roof viewpoint.

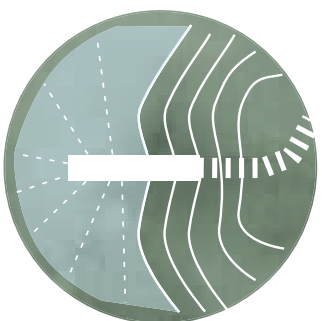


The boat house is a building and a public space that consist in the end and the beginning of the main path between the city, the park and the lake.



The building hosts a mixed-program public facility:

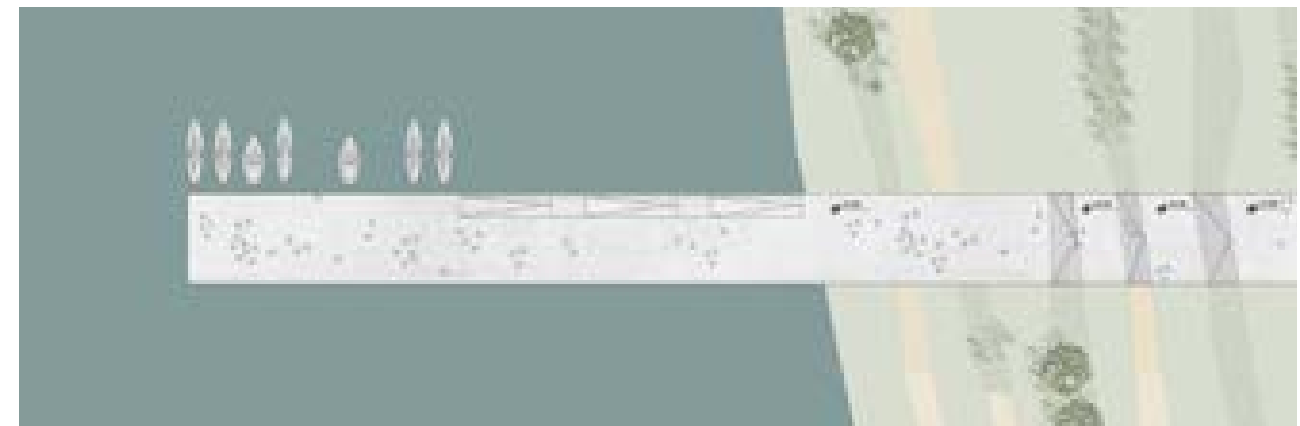
- ground floor: sailing centre and related facilities, café, lake swimming pool, shaded resting areas
- roof: lake view point, resting and relax areas



The roof of the boat house is the continuation of the main path and work as a viewpoint of the rest of the lake and park



BOAT HOUSE BUILDING 1:500 - GROUND FLOOR - 1000 M²

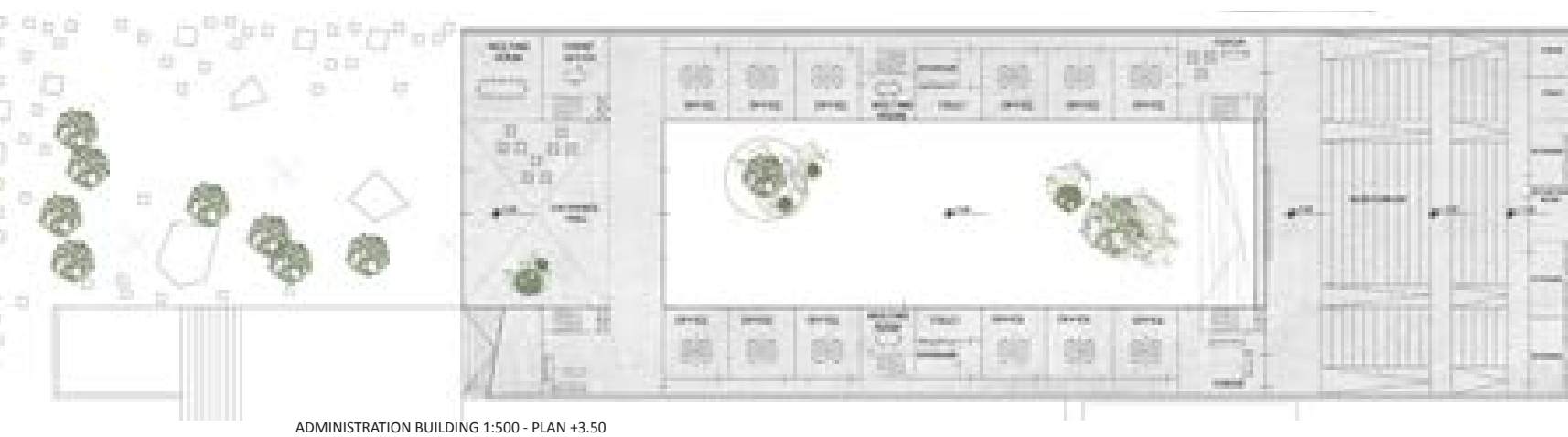
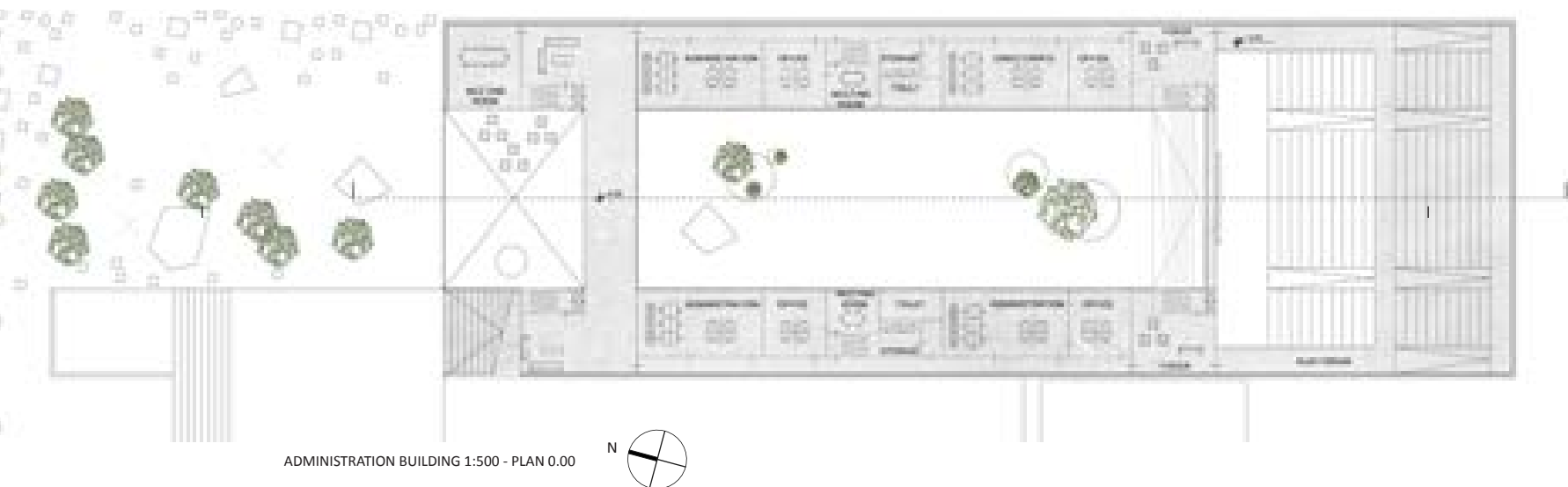


BOAT HOUSE BUILDING 1:500 - ROOF

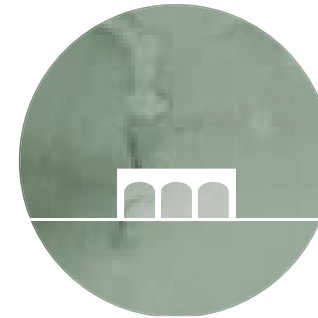


BOAT HOUSE BUILDING - ELEVATION FF

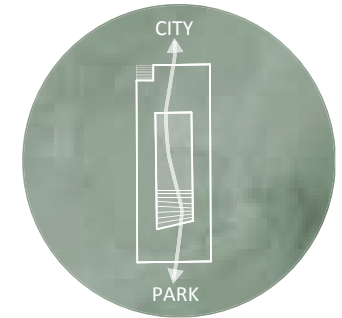
THE ADMINISTRATION BUILDING



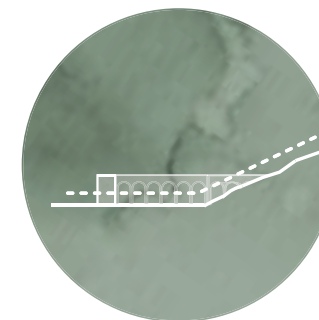
ADMINISTRATION BUILDING - SECTION GG



The design of the new building for Administration Offices is placed in continuity with the Polytechnic University Building and is based on a clear flexibility in functions spaces and on a complete integration into the landscape.



The two levels building has a clear functionality, with a double height main entrance from the square level and a flexible organization of office spaces with different office sizes and meeting rooms. Moreover the building is provided by a two levels auditorium.



This building, integrated into the landscape, allows people to walk directly from the level of the street (where there is the city entrance and the double height hall) to the level of the park.



The building itself generates two different urban squares: the courtyard, directly connected with the administrative spaces and at the same level of Madre Teresa square, and the square on the roof, accessible during all day time.

COST ESTIMATION

PARTERRE - PARK ENTRANCE				
	sqm		Parametric cost €/sqm	Cost €
Treshold area	37.750		90	3.397.500
Square area	26.410		120	3.169.200
Pedestrian Path _+ 13.00 met	5.520		110	607.200
Total sqm	69.680			7.173.900

THE GENERAL DIRECTORATE OF THE STATE POLICE					
	Parking sqm	Indoor space sqm	Outdoor space + structure sqm	Parametric cost €/sqm	Cost €
Parking ramps	430			300	129.000
Level -1	4.800			300	1.440.000
Level 0	2.340			300	702.000
Level 0		2.460		900	2.214.000
Level 1		2.380		900	2.142.000
Level 1			2.420	450	1.089.000
Level 2		2.200		900	1.980.000
Level 3		2.200		900	1.980.000
Level 4		2.200		900	1.980.000
Roof			4.800	450	2.160.000
Total sqm	7.570	11.440	7.220		15.816.000

THE PUBLIC SERVICE CENTER					
	Parking sqm	Indoor space sqm	Outdoor space + structure sqm	Parametric cost €/sqm	Cost €
Parking ramps	680			300	204.000
Level 0	1.900			300	570.000
Level 0		1.340		900	1.206.000
Level 0			1.260	450	567.000
Level 1	1.200			300	360.000
Level 1		1.840		900	1.656.000
Level 1			140	450	63.000
Level 2	550			300	165.000
Level 2		2.450		900	2.205.000
Level 2			100	450	45.000
Level 3		2.900		900	2.610.000
Level 3			100	450	45.000
Roof			4.500	450	2.025.000
Total sqm	4.330	8.530	6.100		11.721.000

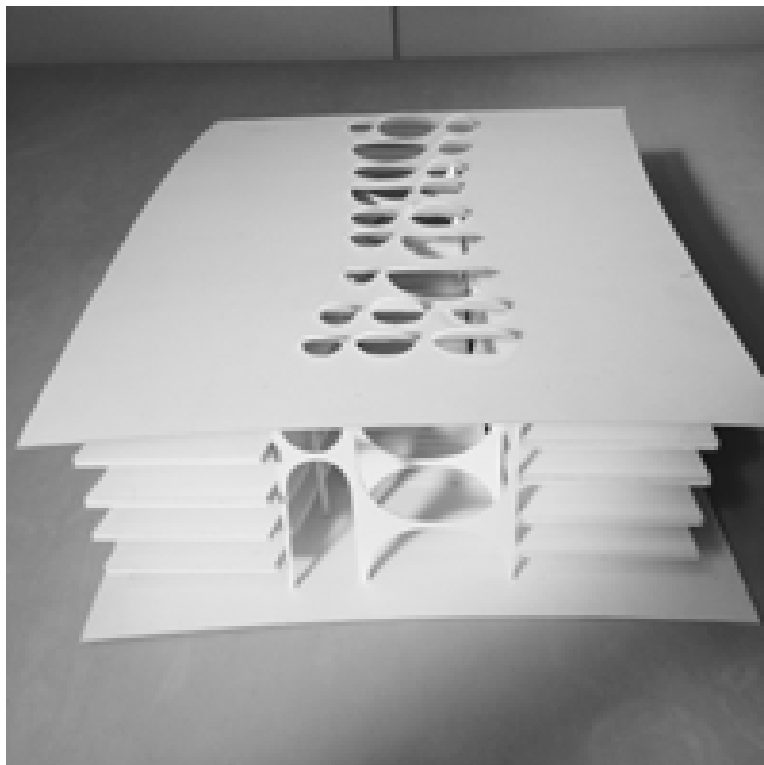
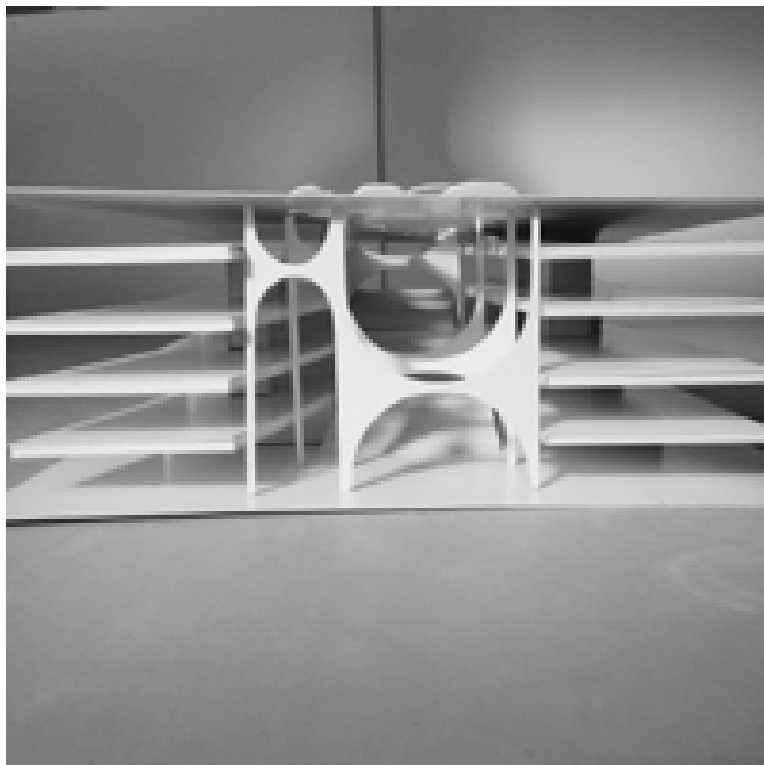
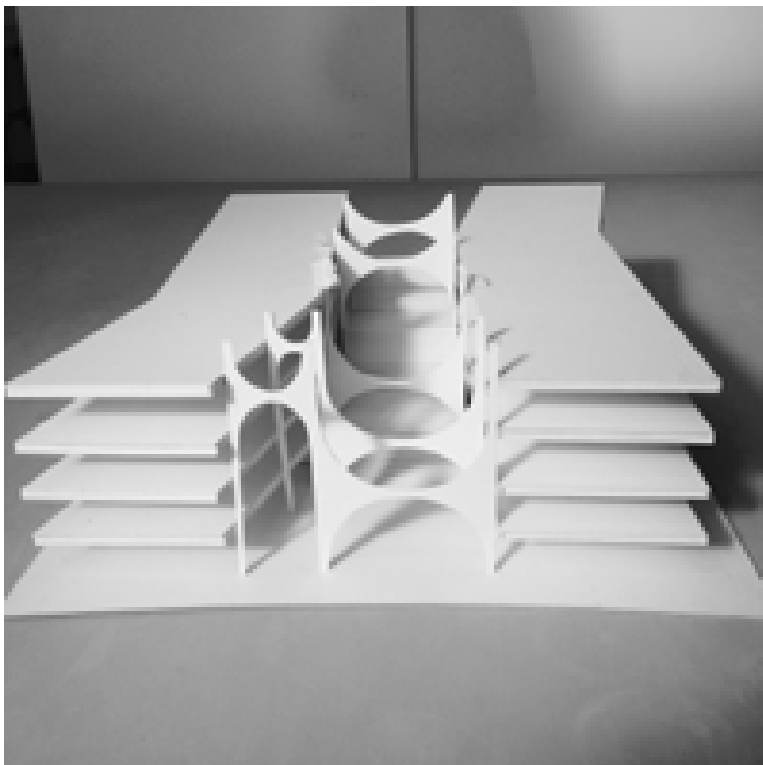
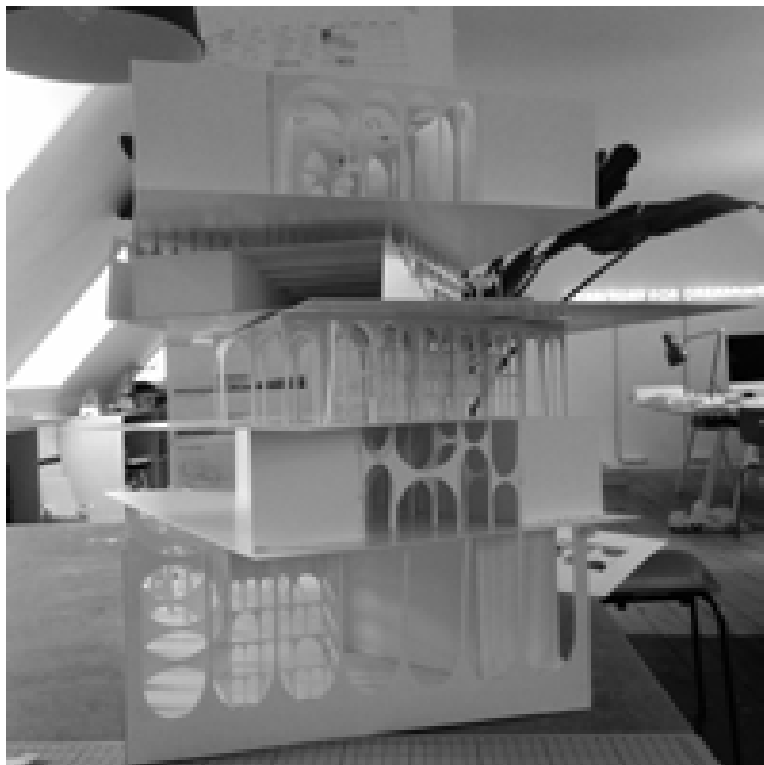
THE POLICE MUSEUM - renovation				
	Indoor space sqm		Parametric cost €/sqm	Cost €
Level 0	894		500	447.000
Level 1	266		500	133.000
Total sqm	15.040			580.000

THE MEDIATHEQUE AND LIBRARY					
	Parking sqm	Indoor space sqm	Outdoor space + structure sqm	Parametric cost €/sqm	Cost €
Parking ramps	515			300	154.500
Level -1	3.745			300	1.123.500
Level 0 Ring building		2.435		900	2.191.500
Level 0 Ring building			625	150	93.750
Level 0		682		900	613.800
Level 1		432		900	388.800
Level 2		358		900	322.200
Level 3		266		900	239.400
Level 4		360		900	324.000
Level 5		350		900	315.000
Level 6		429		900	386.100
Level 7		278		900	250.200
Level 8		330		900	297.000
Roof solid			380	450	171.000
Roof glass			300	450	135.000
Glass facades			4.280	300	1.284.000
Total sqm	4.260	5.920	1.305		8.289.750

THE ADMINISTRATION BUILDING (50% University + 50% Government)					
	Parking sqm	Indoor space sqm	Outdoor space sqm	Parametric cost €/sqm	Cost €
Level 0		3.582		800	2.865.600
Level 0			1.346	150	201.900
Level 1		2.652		800	2.121.600
Roof			2.374	150	356.100
Total sqm		6.234	3.720		5.545.200

THE BOATHOUSE					
	Parking sqm	Indoor space sqm	Outdoor space sqm	Parametric cost €/sqm	Cost €
Level 0		980		1.100	1.078.000
Roof			980	150	147.000
Total sqm		980	980		1.225.000

BUILDING MODELS



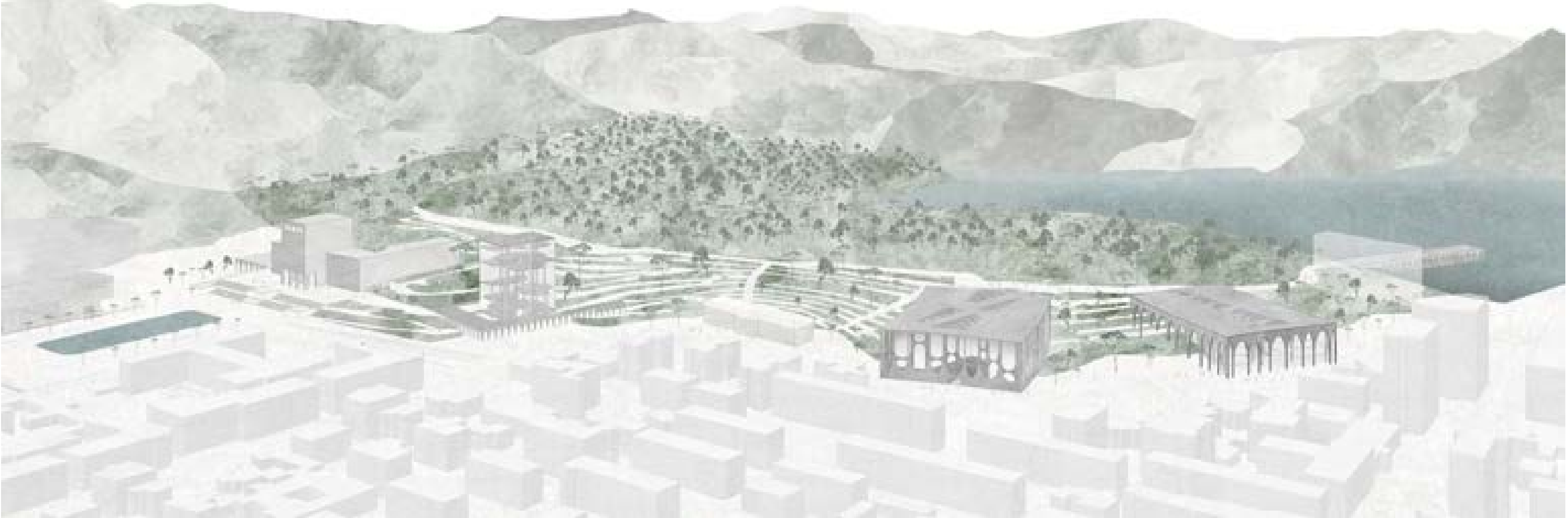
DESIGN TEAM



Anna Maria Indrio

N O R R Ø N
TERRITORY FOR DREAMING

Arch. Rossana Atena, ATENASTUDIO Director	Team leader, Architect MAA and Landscaper
Arch. Marco Sardella, ATENASTUDIO Director	Team leader, Architect MAA, PhD Advanced technology
Arch. Arianna Marino	Architect MAA, PhD Environmental Design
Arch. María José Jiménez Borja	Architect MAA
Arch. Lorenzo Grussu	Architect MAA
Eng. Andrea Atena	Forest Engineer
Arch. Marco Zerbinatti	Architect MAA, Historical Monument Specialist
Arch. Anna Maria Indrio	Team leader and Architect MAA
Arch. Poul Høilund D. Cruise, NORRØN Director	Team leader and Architect MAA
Arch. Marco Berentz, NORRØN Director	Team leader and Architect MAA
Arch. Gustav Kragg- Jacobsen	Architect MAA
Arch. Pil Whitta	Architect BA
Arch. Laura Wulfsberg	Architect MAA and Landscaper
Arch. Jens Falk Holm	Architect BA and Landscaper
Arch. Hayriye Isik	Architect BA
Eng. Helidon Kokona	Engineer
Arch. Arber Kokoshi	Architect MAA
Arch. Ioli Kika	Architect MAA

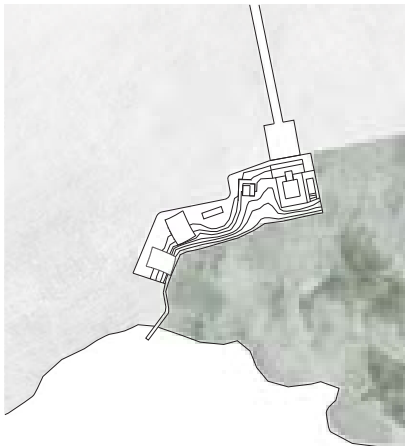


AERIAL VIEW OF THE THRESHOLD BETWEEN THE CITY OF TIRANA AND THE MADH PARK



UNFOLDED ELEVATION 1:1000

TIRANA PARK ENTRANCE THE NEW THRESHOLD BETWEEN CITY AND PARK



CONTEXTPLAN SCALE 1:8000

THE TRANSITION FROM CITY TO PARK

The development of the area between the city of Tirana and the Park i Madh holds a great potential of creating a new physical urban landscape where the inhabitants of the city can meet in a human scale environment. From being a border between the everyday city life and the green recreational park life – the area will be transformed into

what we call a “threshold”, a spatial transition not only urban neither only recreational. At the same time the new threshold creates a connection from the Mother Theresa Square to the Lake. This way the threshold becomes a mental transition from the past towards the future as a democratic gesture for the people of Tirana.

THE PUBLIC THRESHOLD HARD SCAPE + SOFT SCAPE

Placed on a mountain slope the public threshold is created by combining two different languages: The soft scape of the park and the hard scape of the city. In This way merging the best qualities from the two different worlds into one.

Soft scape – the language of the park with greenery, tall trees and wood.
Hard scape – the language of the city with hard surfaces, stones and

photocatalytic concrete: materials and technologies available, durable and easy to maintain.

Combined the new languages of the public threshold offers various possibilities for new activities to take place. Through inventive and innovative interpretations of the two more classic typologies the new public threshold contains a great potential to develop its own unique language physically expressing the future public life of Tirana.

AN OPENING AND A CLOSURE

The buildings that are placed in this threshold contribute with their volumes to create squares and volumetric rhythm along the edge of the threshold. The sequence of those buildings is carefully related to the needed functions in a way that the building contributes to the public life being themselves an active part of the threshold. On both sides of the existing university, enhancing and emphasizing the axiality of the beautiful existing building, the new university administration office will be placed and the new university facilities will be formed as a totally integrated building in the landscape. The threshold is initiated by a new transparent mediatheque emerging out of the university building. The mediatheque offers a new program and a new functionality both for the university and the public life. The new volume of the mediatheque is mirroring the front volume of the existing university and thereby introducing the entrance to the public threshold.

Between the mediatheque and the new building of the police department a new city square will be created around the renewed police museum, the rest of the buildings will be pulled down in order to create a clear special relationship between the mediatheque the museum

and the police department. Along the public threshold then we will place the public service. The sequence of all the buildings will make sure that public life will span from Mother Theresa's square along the Madhe Park, including in a natural way the new Olgjatis office building, towards the lake. Through the public thresholds the buildings are situated with care for the public life and attention to the human scale. At the end of the threshold we propose a new public boat house situated on the edge of the lake creating an ending point for the all threshold and utilizing the water as a recreational resource for the people of Tirana.

VELOCITIES FAST VS. SLOW

The Public threshold contains two different kinds of movement. A fast direct movement from the city to the park and a slow movement for enjoying a more recreational stroll. Across the threshold 7 big stairs brings the people directly from the level of the city to the level of the park. Some of the stairs are outdoor stairs open 24 hours a day as gates to the park. Other stairs are inside the new buildings creating a possible movement through the volume

from the city to the park. Stairs are not the only access to the park.

A HUMAN SCALE

Because of the way the buildings are placed in the new public threshold they act as mediators between the big scale of the city and the small scale of the park - linking the two together. In this way the new volumes become recognizable in both areas, ensuring tranquility in the transition between them.

The mediator introduces a human scale between government and civic life – creating generous public spaces connecting to the city and the park.

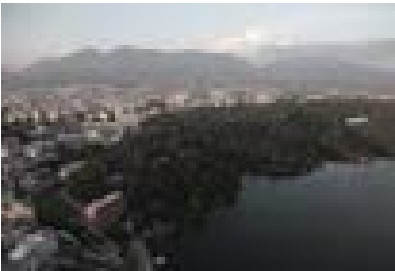
The design is deeply rooted in a Scandinavian tradition where the public spaces are treated with a high degree of dignity, quality in the selecting materials and an understanding of creating physical form serving the democratic public life.

THE ARCH TRANSFORMING THE ARCH ACCORDING TO FUNCTION

As a design parameter for creating an expression of the different buildings we have tried to find a “motive” that’s recognizable for the area and its context. We have chosen to work with the classical arch as a creative obstruction. Not copying the arch but using it in new ways. In this way each building obtains

a different recognizable look due to its function but within the same spatial pallet.

Arches are used as a structure, which carries both the floor plans of the buildings as well as the large roof, naturally ventilated below. This roof creates a shade for the transparent interior ensuring comfort and nice working environment in the offices, views to the threshold and a beautiful spatial expression. In this way the new language of the arc achieves a three-layered purpose: Structure, Shade and artistic contextual reference.



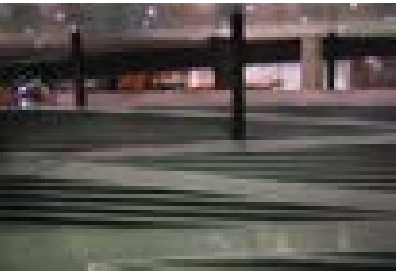
ARIAL VIEW OF TIRANA



LANDSCAPE REFERENCE BY SLA ARCHITECTS



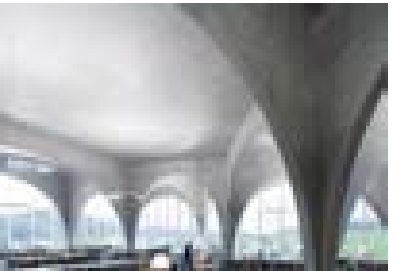
A PATH ACROSS



STAIRS AND RAMPS BECOMES A LANDSCAPE

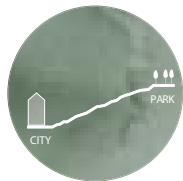


THE STEPS BECOMES AN AUDITORIUM IN THE INTERIOR - ANNA MARIA INDRIO



ARCHES CREATES THE STRUCTURE AND THE SPACE - TOYO ITO ARCHITECTS

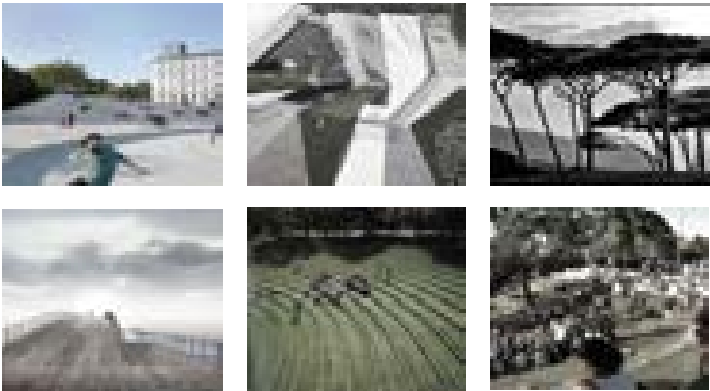
THE THRESHOLD



THE THRESHOLD
HARD SCAPE TO SOFT SCAPE

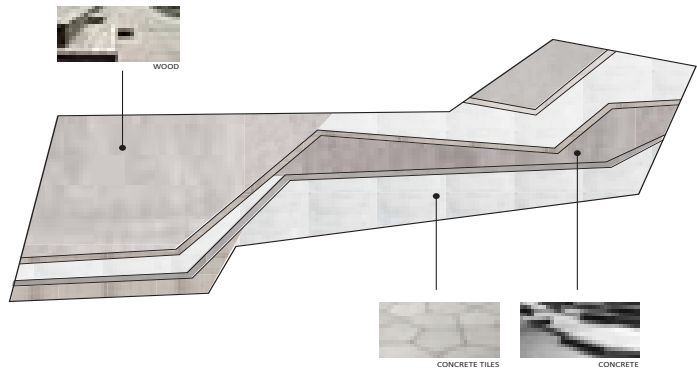
Placed on a mountain slope the public threshold is created by combining two different languages: The soft scape of the park and the hard scape of the city. In this way merging the best qualities from the two different worlds into one. Soft scape – the language of the park with greenery, tall trees and wood. Hard scape – the language of the city with hard surfaces, stones and photocatalytic concrete.

Combined the new languages of the public threshold offers various possibilities for new activities to take place. Through Inventive and innovative interpretations of the two more classic typologies the new public threshold contains a great potential to develop its own unique language physically expressing the future public life of Tirana.

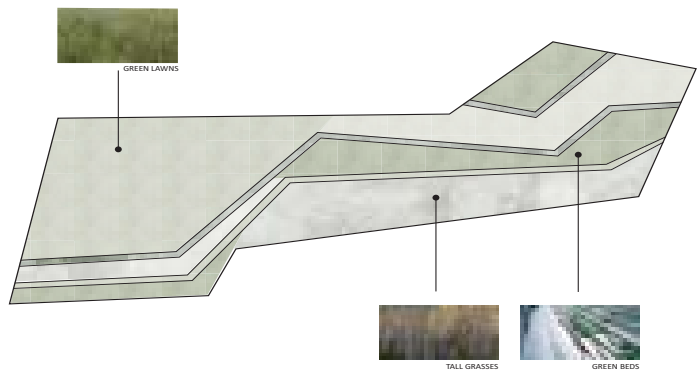


REFERENCES FOR THE THRESHOLD

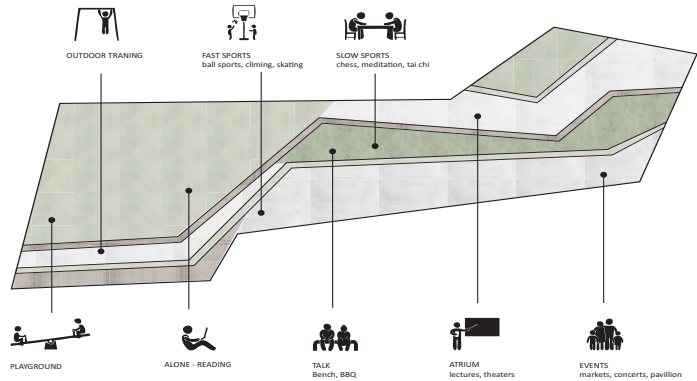
HARD SCAPE - THE LANGUAGE OF THE CITY



SOFT SCAPE - THE LANGUAGE OF THE PARK



ACTIVITIES - MEETINGS AND PARK ACTIVITIES



SITEPLAN 1:1000

THE MEDIATHEQUE & LIBRARY

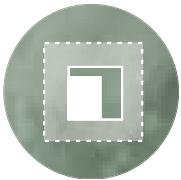


The threshold is initiated by a new transparent building, dedicated to a mediatheque & library, emerging out of the landscape and of the university building.

The mediatheque & library is a mixed-program public facility which combines library and university facilities.

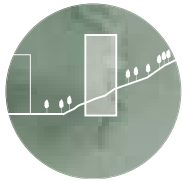
The building is composed of three main elements: arches, plates and skin.

Arches are used as a structure, which carries both the floor plans of the buildings as well as the roof, naturally ventilated below. Each floor is a round plate visually and physically connected with all the others, creating an inner dynamic.



The mediatheque & library building offers a new program and a new functionality both for the university, public life and citizen:

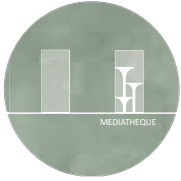
- basement: parking area easily accessible from Parku i Madh street;
- ground floor: information desk, café, canteen, outside spaces for visitors and reading rooms;
- first - third floor: library and reading rooms;
- fifth - seventh floor: mediatheque and study spaces.



Around and through the new mediatheque & library building is possible to enjoy both different kind of movement:

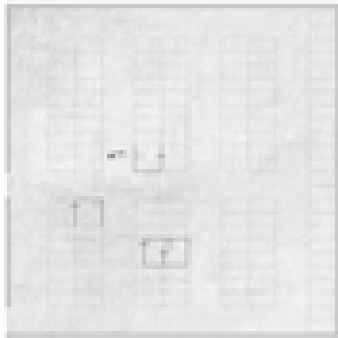
Passing through the building, people can directly walk from the level of the street (where there is the city entrance) to the level of the park.

Meantime, along the public threshold the new landscape is shaped as ramps creating a slow movement from the city level to the park level. Ramps and stairs make it possible to climb the small mountain slope with bikes and prams and at the same time increase the accessibility for the disabled.

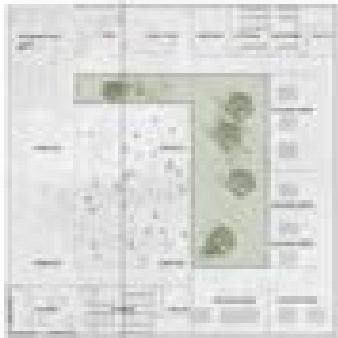


The new volume of the mediatheque & library is mirroring the front volume of the existing Polytechnic University Building as an open and transparent twin.

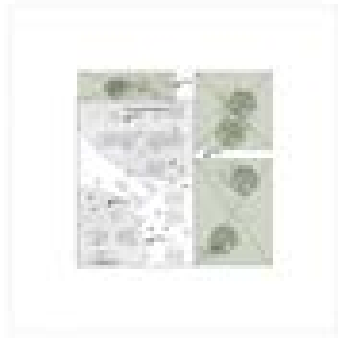
The building share with the Polytechnic the same level of the access (+5.00 m). In this way, both buildings are connected thanks to the new threshold of the Park through paths, green areas and activities spaces



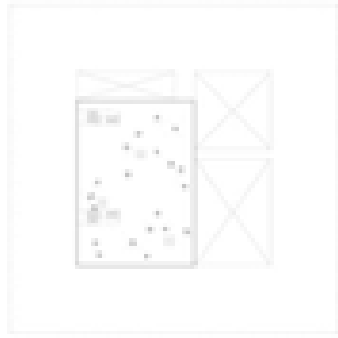
MEDIATHEQUE & LIBRARY 1:500 - BASEMENT/ 3745 M2



MEDIATHEQUE & LIBRARY 1:500 - GROUND FLOOR/ 3120 M2



MEDIATHEQUE & LIBRARY 1:500 - 1 FLOOR/ 432 M2



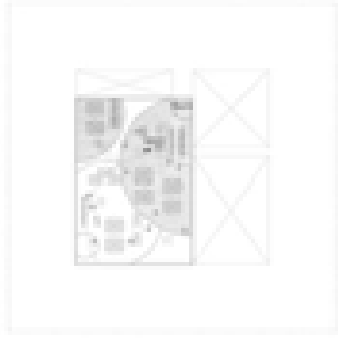
MEDIATHEQUE & LIBRARY 1:500 - DOUBLE HEIGHT



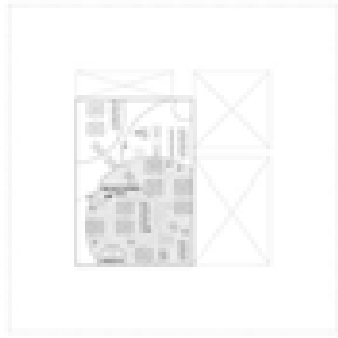
MEDIATHEQUE & LIBRARY 1:500 - 2 FLOOR/ 358 M2



MEDIATHEQUE & LIBRARY 1:500 - 3 FLOOR/ 266 M2



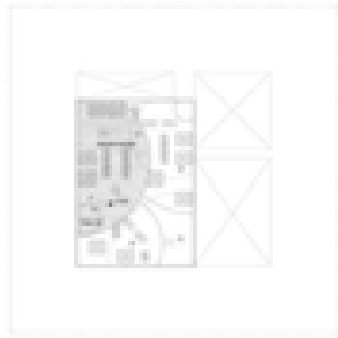
MEDIATHEQUE & LIBRARY 1:500 - 4 FLOOR/ 360 M2



MEDIATHEQUE & LIBRARY 1:500 - 5 FLOOR/ 350 M2



MEDIATHEQUE & LIBRARY 1:500 - 6 FLOOR/ 430 M2



MEDIATHEQUE & LIBRARY 1:500 - 7 FLOOR/ 280 M2



MEDIATHEQUE & LIBRARY 1:500 - 8 FLOOR/ 335 M2



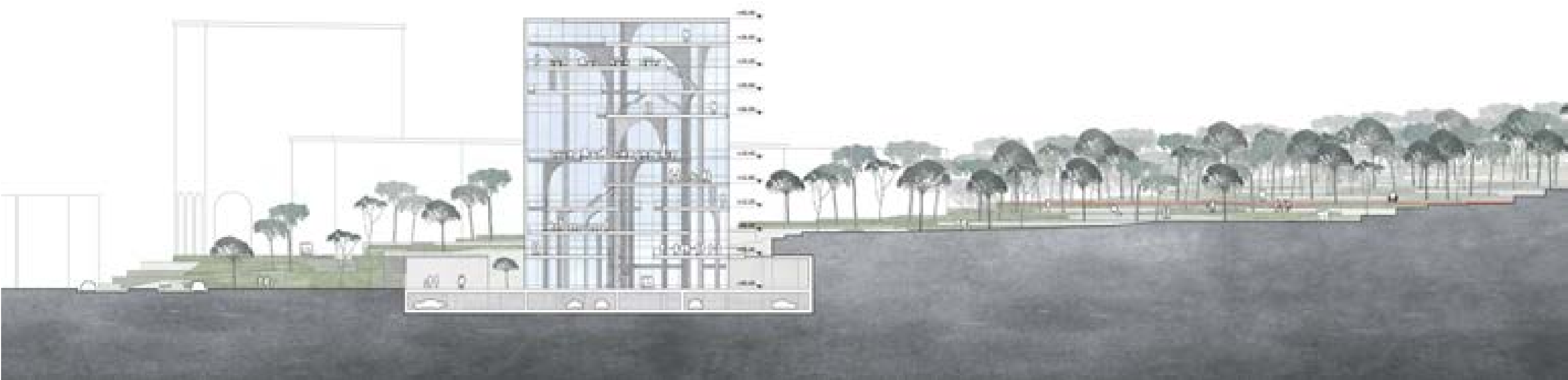
MEDIATHEQUE & LIBRARY 1:500 - ROOF



THE MEDIATHEQUE MARKS THE ENTRANCE TO THE THRESHOLD - SEEN FROM MOTHER TERESE SQUARE

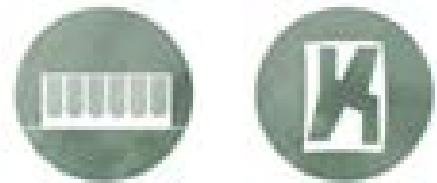


VIEW OF THE OLD TOWER OF THE UNIVERSITY AND THE NEW MEDIATHEQUE



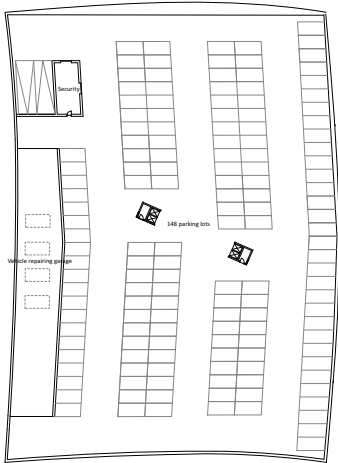
THE MEDIATHEQUE 1:200 - SECTION BB

THE GENERAL DIRECTORATE OF STATE POLICE

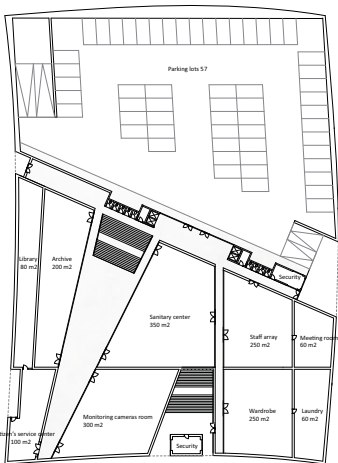


The new general directorate of the state of police is a very important building for the city of Tirana and for the entire nation. As such it demands to communicate different stories. It is democratic, but at the same time secure - it is iconic, but on the same time a modern functional and flexible office building - it is prestigious, but efficient and sustainable. It needs to give the message of a welfare future for the nation and the city taking care of its citizens and on the same time of the economy of means.

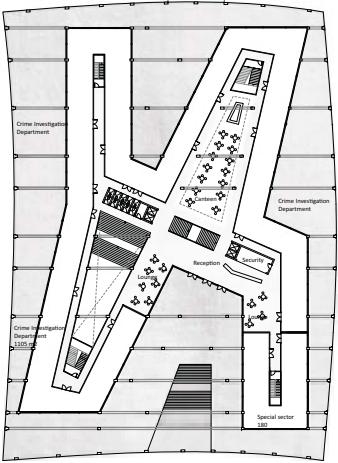
We have therefore created an extrovert building formed as a four armed star where we have given maximum care to the employees, all viewing the city and the park. This simple and rational office building develops along a cross plan with atrium on each side of a middle section containing common vertical and horizontal communications lines and services. The offices are totally flexible and clearly to be furnished in different ways. It is a democratic building where all users can meet each other in the central space both horizontally and vertically.



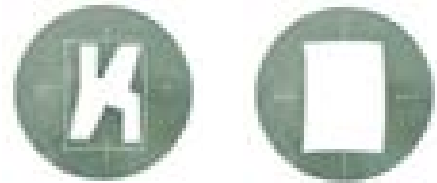
THE GENERAL DIRECTORATE OF STATE POLICE 1:500 - BASEMENT
4800 M²



THE GENERAL DIRECTORATE OF STATE POLICE 1:500 - GROUND FLOOR
4800M²

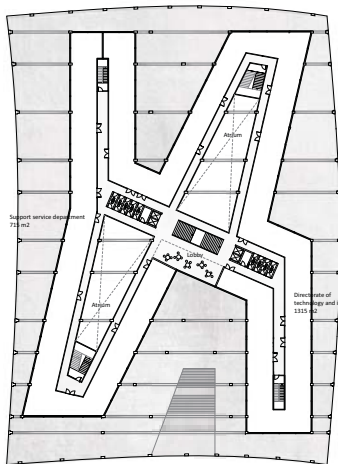


THE GENERAL DIRECTORATE OF STATE POLICE 1:500 - 1 FLOOR
2200 M²

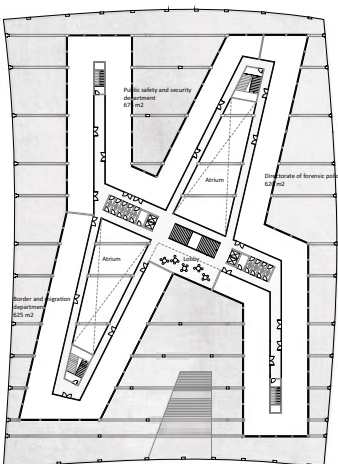


Departments can be assembled together by internal corridors with a variety of common and single offices. The "star" is inscribed under a big roof standing on a plinth, which follows the couter of the roof. The roof is carried by a structure of arches, stabilized by a system of perpendicular secondary structure.

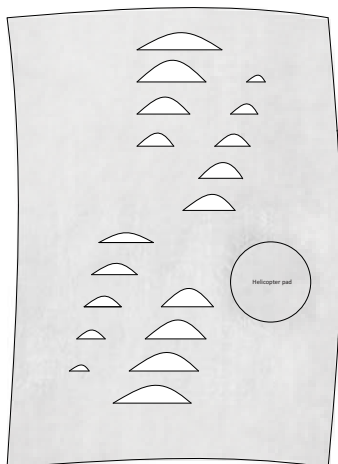
The big roof provides not only an efficient shadow protecting offices and amenities area for the employees, but also defines personality for the building and security protection to the facade. The plinth is an efficient physical distance keeper but the layers of arches mitigate this otherwise hard expression and transform the building in a poetic environment where light and shadows plays an important role. In this way the building act as an "attractor" defining the site, connected to the new public threshold.



THE GENERAL DIRECTORATE OF STATE POLICE 1:500 - 4 FLOOR
2200 M²



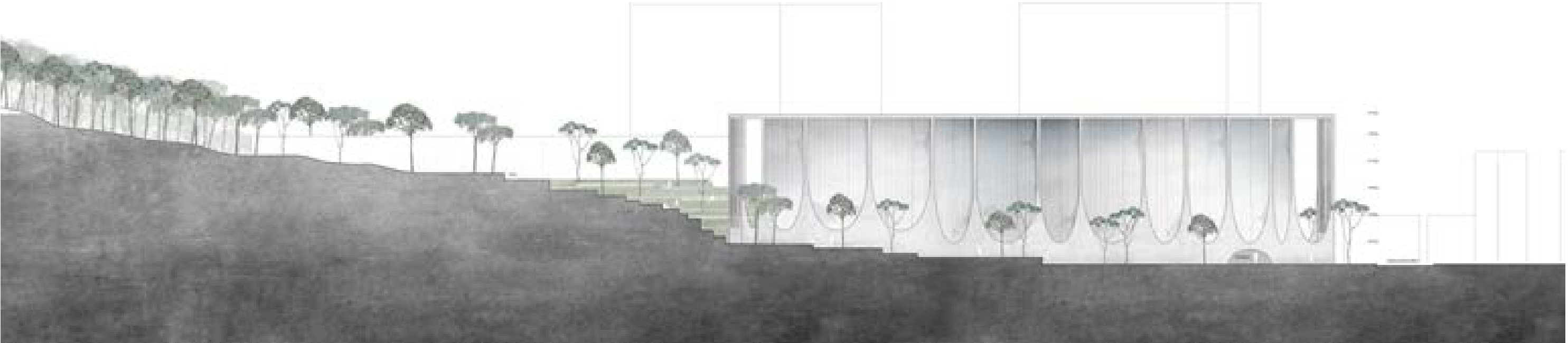
THE GENERAL DIRECTORATE OF STATE POLICE 1:500 - 3 FLOOR
2200 M²



THE GENERAL DIRECTORATE OF STATE POLICE 1:500
ROOF



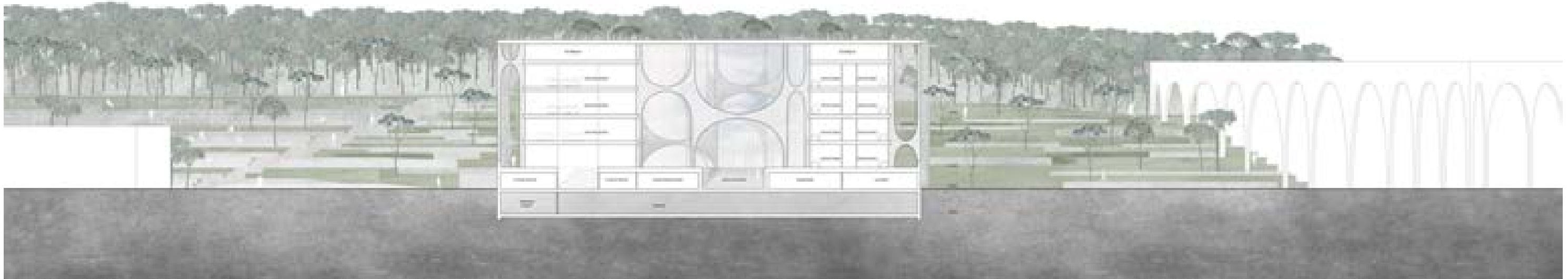
THE GENERAL DIRECTORATE OF STATE POLICE 1:200 - 2 FLOOR
2200 M²



THE GENERAL DIRECTORATE OF STATE POLICE 1:200 - ELEVATION AA



EXTERIOR VIEW SEEN FROM THE PATH AT THE TOP OF THE THRESHOLD OVERLOOKING THE GENERAL DIRECTORATE OF STATE POLICE



THE GENERAL DIRECTORATE OF STATE POLICE 1:200 - SECTION CC

THE PUBLIC SERVICE CENTER



The public service mall will be seen together with the police building. Twisting the two buildings, a new city square appears and establishes the new threshold to the park. The motif of the arch is now reversed and the public services mall open towards the square and the city on all sides. The building invites the citizens in and reveals what is going on its inside.



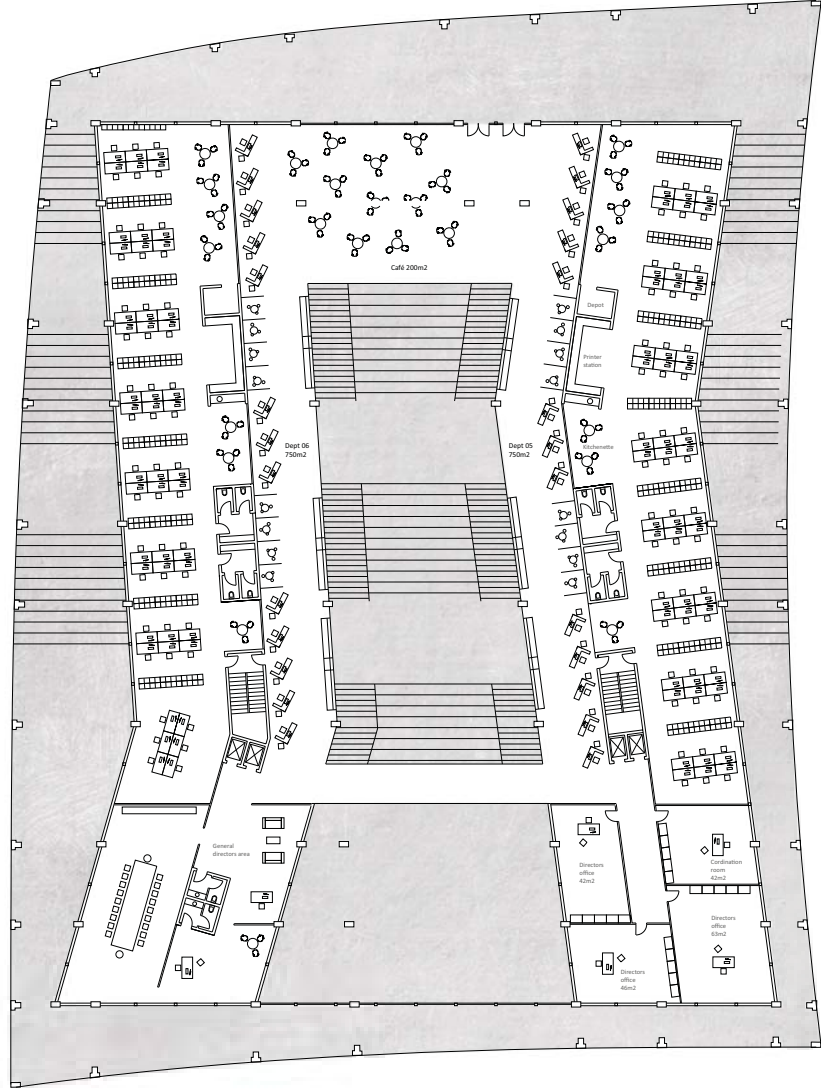
The public can choose just to step inside and experience the beautiful atrium while climbing to the park. On each pause the publics will meet the front offices of each department and the waiting areas facing the life that unfolds in the atrium. On especially occasion the atrium can be transformed in cinema, dancehall, meetings hall and other public performance activities. Because the atrium is a protected environment in all seasons it can, depending on openings hours, function as a street environment.



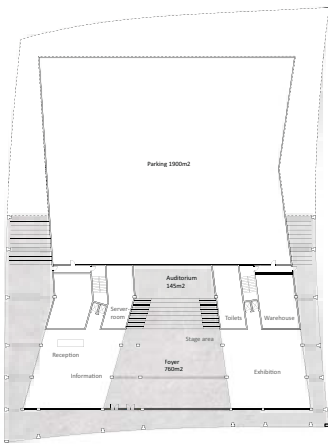
The atrium spatial feeling is astonishing. The perspective, as in a Piranesi renaissance drawing, will change all the time, creating a spectacular sequence of crescendo of rooms. The atrium culminates on the level of the park, where inside and outside space melt together. The big roof is also protecting the very transparent glass building from solar impact, creating the necessary shade.



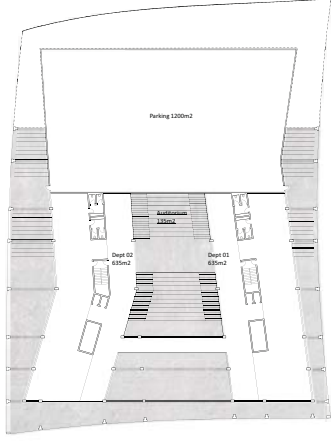
The stairs follow the slope inside and outside climbing to the level of the park. The walk under the arches inside and outside along the building will be an astonishing architectural experience, as a cathedral of democratic modernism.



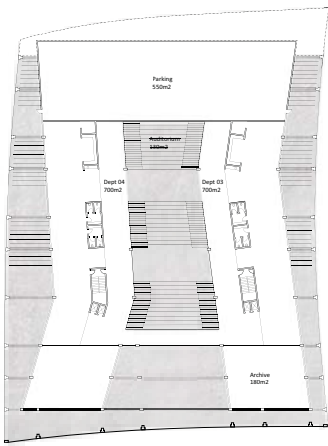
PUBLIC SERVICE CENTER 1:200 - 3 FLOOR
2170 M²



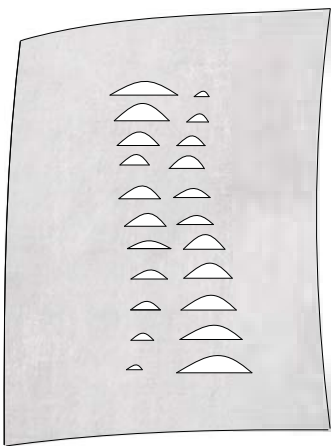
PUBLIC SERVICE CENTER 1:500 - GROUND FLOOR
3000 M²



PUBLIC SERVICE CENTER 1:500 - 1 FLOOR
2600 M²



PUBLIC SERVICE CENTER 1:500 - 2 FLOOR
2380 M²



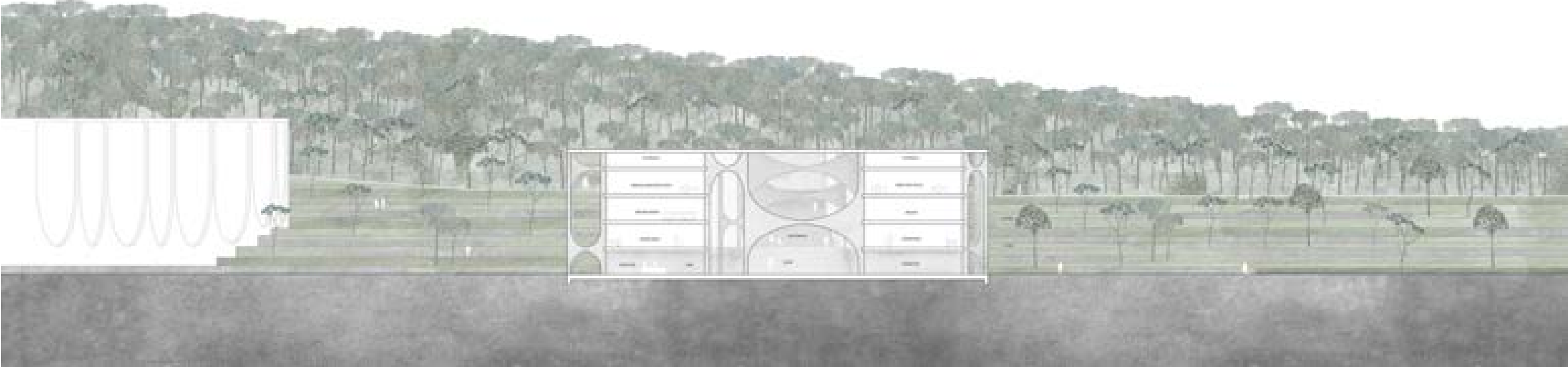
PUBLIC SERVICE CENTER 1:500 - ROOF PLAN



VIEW FROM THE COLONADE AROUND THE GENERAL DIRECTORATE OF STATE POLICE



INTERIOR VIEW FROM THE BIG COMMON STAIRWAY IN THE PUBLIC SERVICE CENTER



PUBLIC SERVICE CENTER 1:200 - SECTION DD

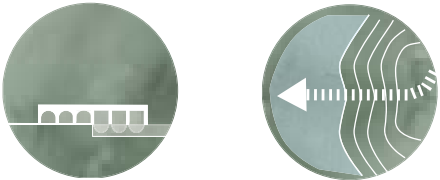


EXTERIOR VIEW - THE ARCHES OF THE GENERAL DIRECTORATE OF STATE POLICE AND THE PUBLIC SERVICE CENTER FRAMES THE PUBLIC THRESHOLD IN BETWEEN - CREATING A SMALL SQUARE FOR EXHIBITING SCULPTURES



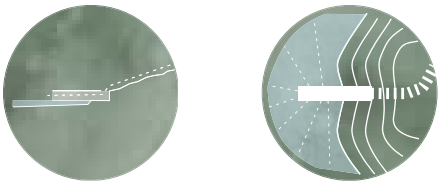
PUBLIC SERVICE CENTER 1:200 - ELEVATION EE

THE BOAT HOUSE BUILDING



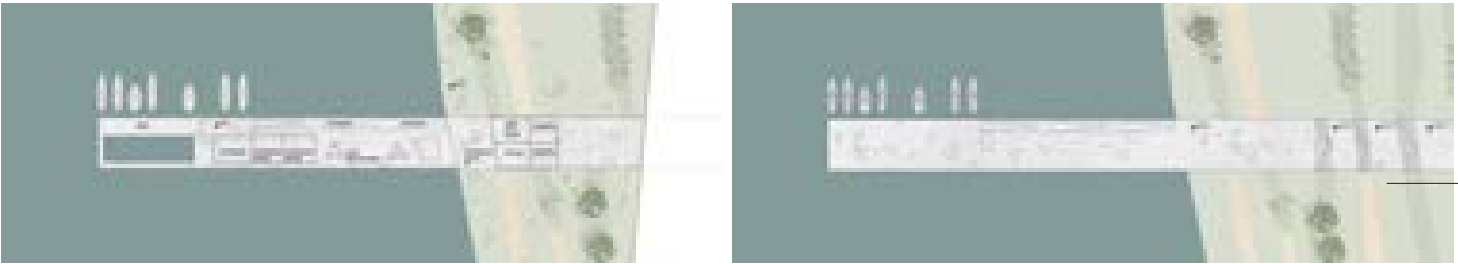
The boat house building, with the recognizable arcs, become the attractor element on the lake. The arcs are used as a structural element that define the shaded activities space and the roof viewpoint.

The boathouse is a building and a public space that consist in the end and the beginning of the main path between the city, the park and the lake.



The building hosts a mixed-program public facility:
- ground floor: sailing centre and related facilities, café, lake swimming pool, shaded resting areas
- roof: lake view point, resting and relax areas

The roof of the boathouse is the continuation of the main path and work as a viewpoint of the rest of the lake and park



BOAT HOUSE BUILDING 1:500 - GROUND FLOOR - 1000 M²

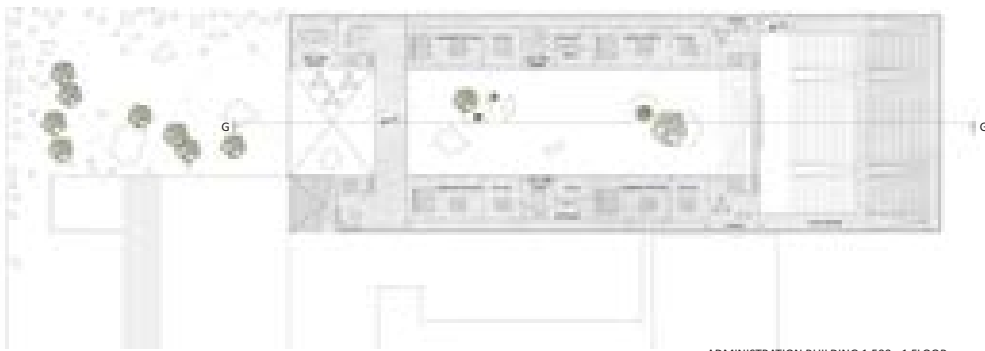
BOAT HOUSE BUILDING 1:500 - ROOF



BOAT HOUSE BUILDING 1:200 - ELEVATION FF



ADMINISTRATION BUILDING 1:500 - GROUND FLOOR
3900 M²

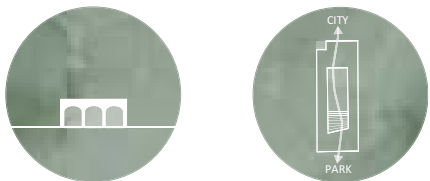


ADMINISTRATION BUILDING 1:500 - 1 FLOOR
3000 M²



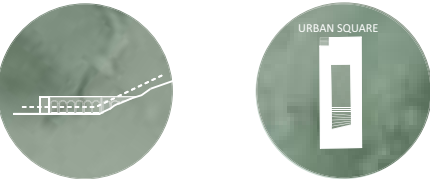
ADMINISTRATION BUILDING 1:200 - SECTION GG

THE ADMINISTRATION BUILDING



The design of the new building for Administration Offices is placed in continuity with the Polytechnic University Building and is based on a clear flexibility in spaces and on a complete integration into the landscape.

The two levels building has a clear functionality, with a double height main entrance from the square level and a flexible organization of office spaces with different office sizes and meeting rooms. Moreover the building is provided by a two-level auditorium



This building, integrated into the landscape, allows people to walk directly from the level of the street (where there is the city entrance and the double height hall) to the level of the park.

The building itself generates two different urban squares: the courtyard, directly connected with the administrative spaces and at the same level of Madre Teresa square, and the square on the roof, accessible during all day time.