



# A CHAIN OF GARDEN GATES

TIRANA LAKE PARK GATE

# HISTORICAL OVERVIEW

Tirana 1921



Tirana 1964  
Tirana 1945



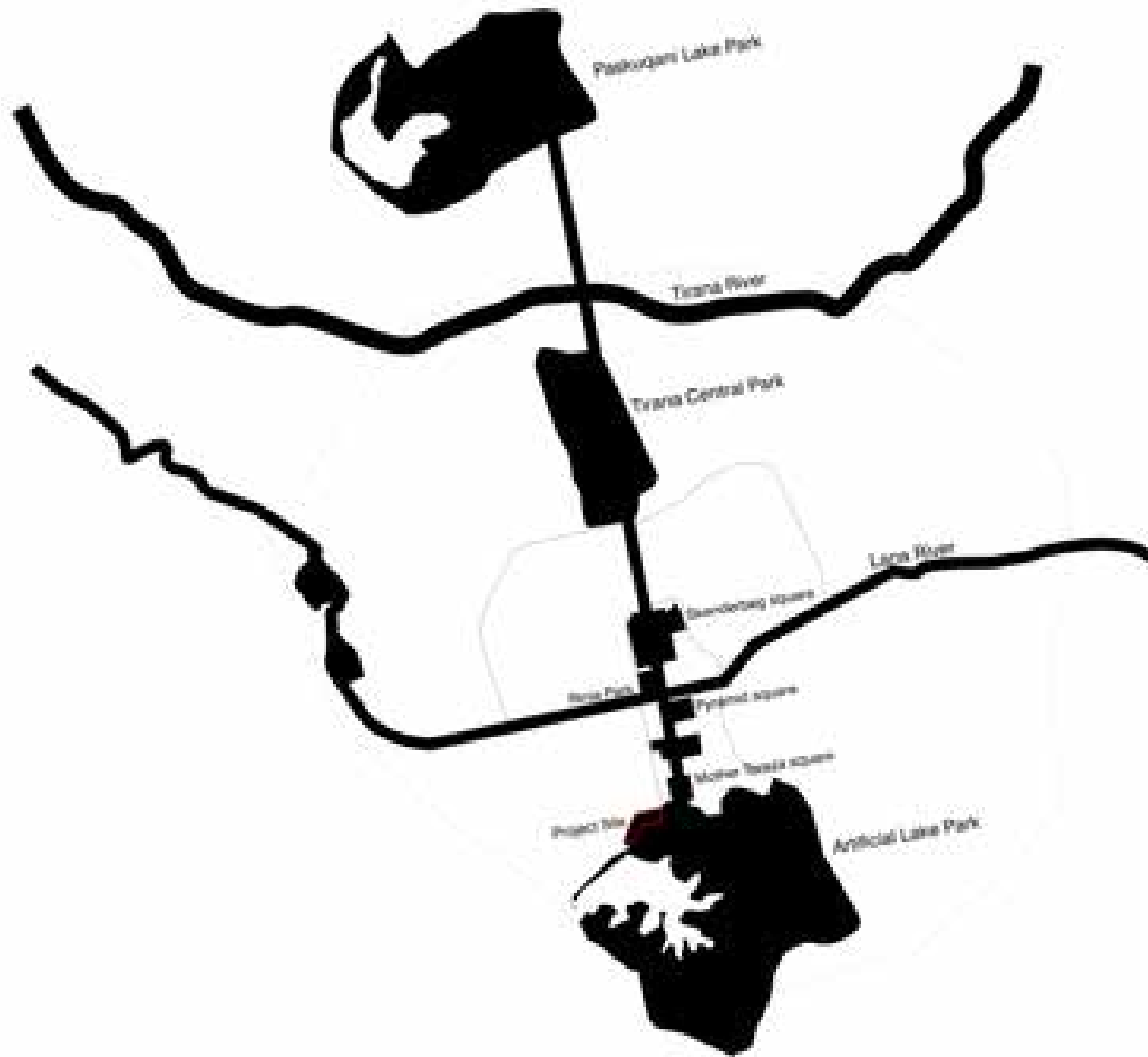
Tirana 2012



TIRANA AS A NEW CAPITAL



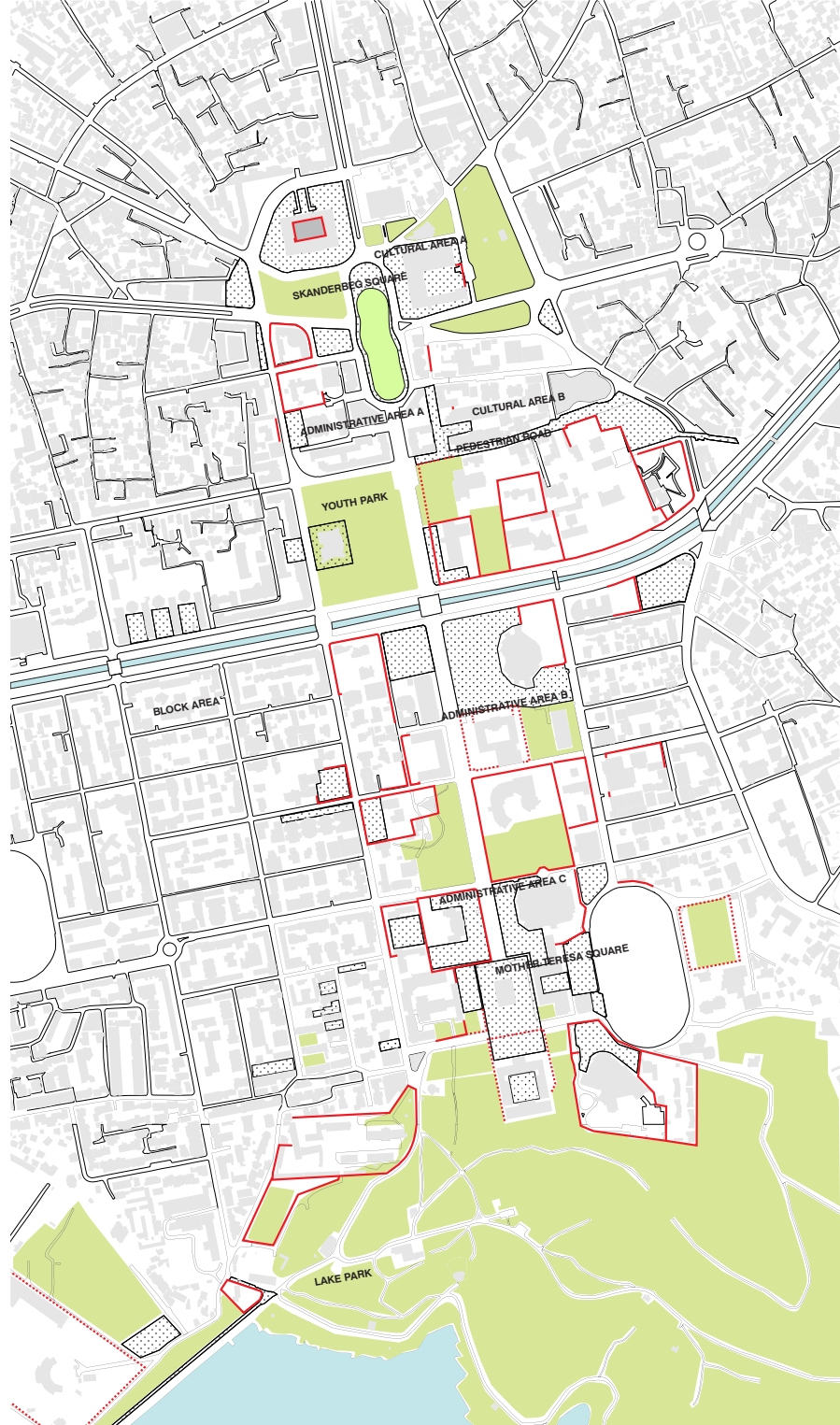
# CONTINUITY OF THE AXIS



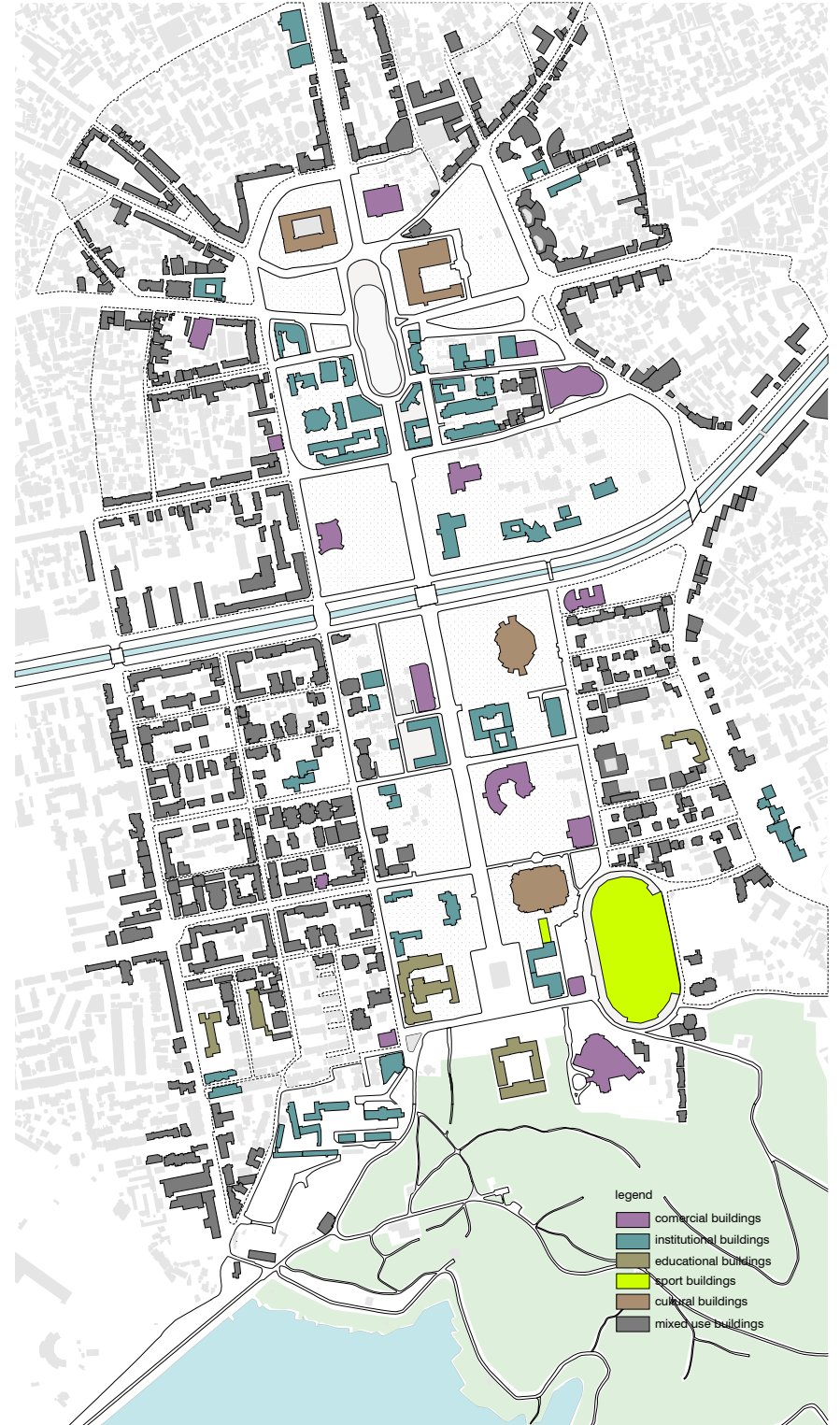
# CONTINUITY OF THE AXIS



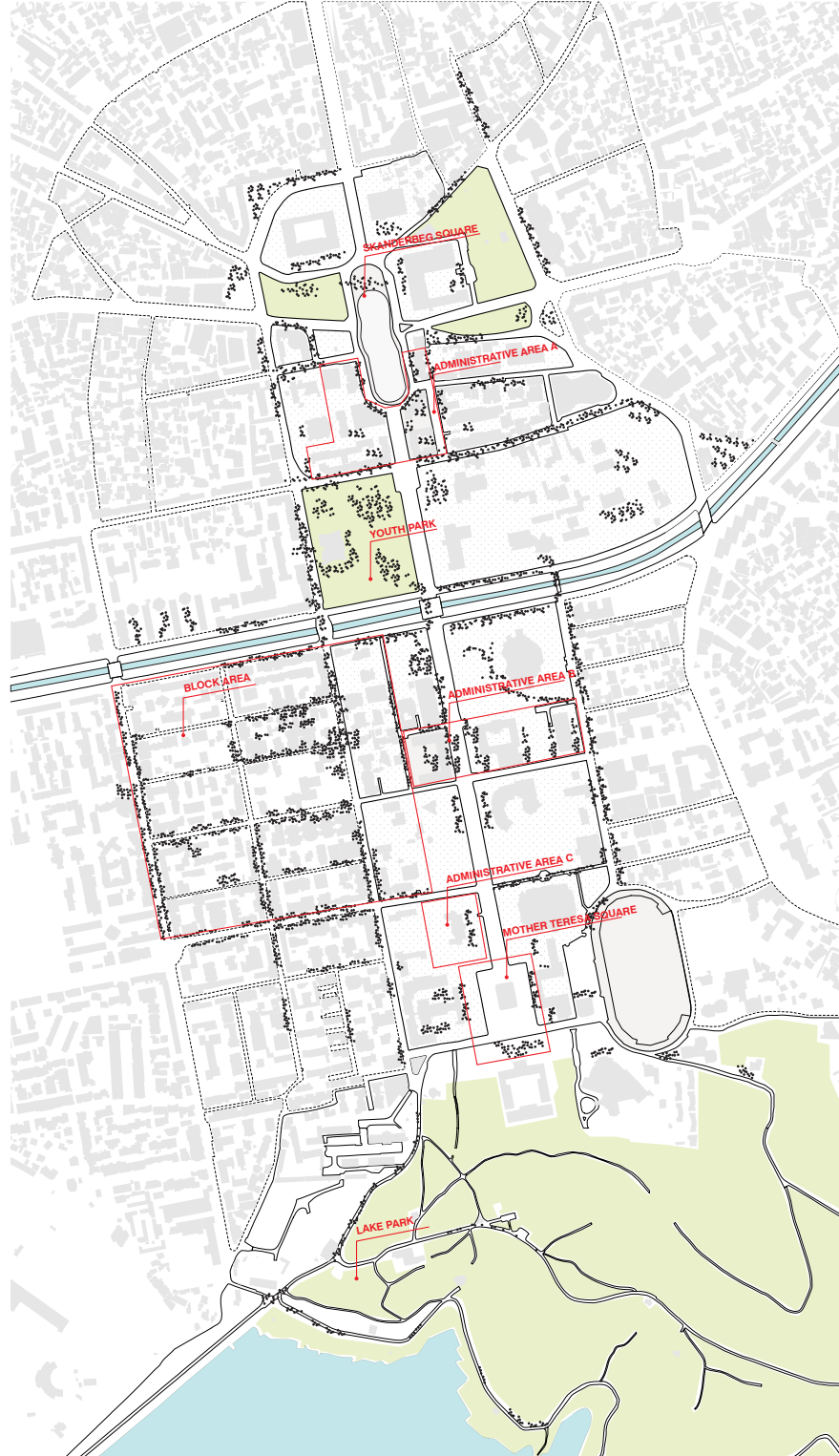
Series of different itineraries and public/green spaces



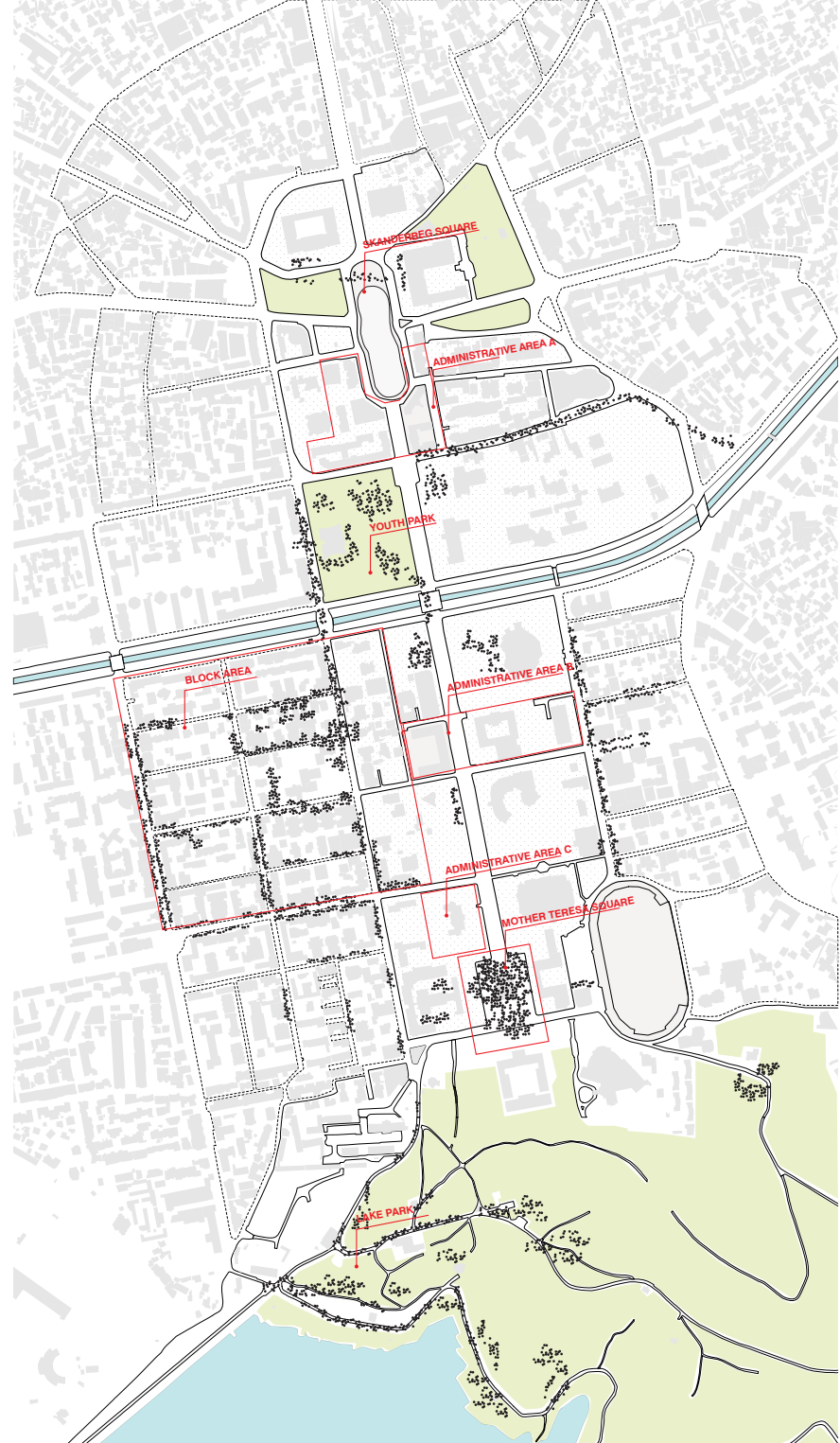
**PUBLIC & GREEN SPACES**  
public space



**FUNCTIONS**  
Program along the main axis



**FLUXES - day**  
 accumulation of fluxes during the day and the most attractive areas



**FLUXES - afternoon**  
 accumulation of fluxes during the afternoon and the most attractive areas



**GATHERING POINTS**  
Network of gathering nodes in relation to the water



*Size Comparison of Principal  
Parks over the world.*



CENTRAL PARK, NYC, USA  
341 ha

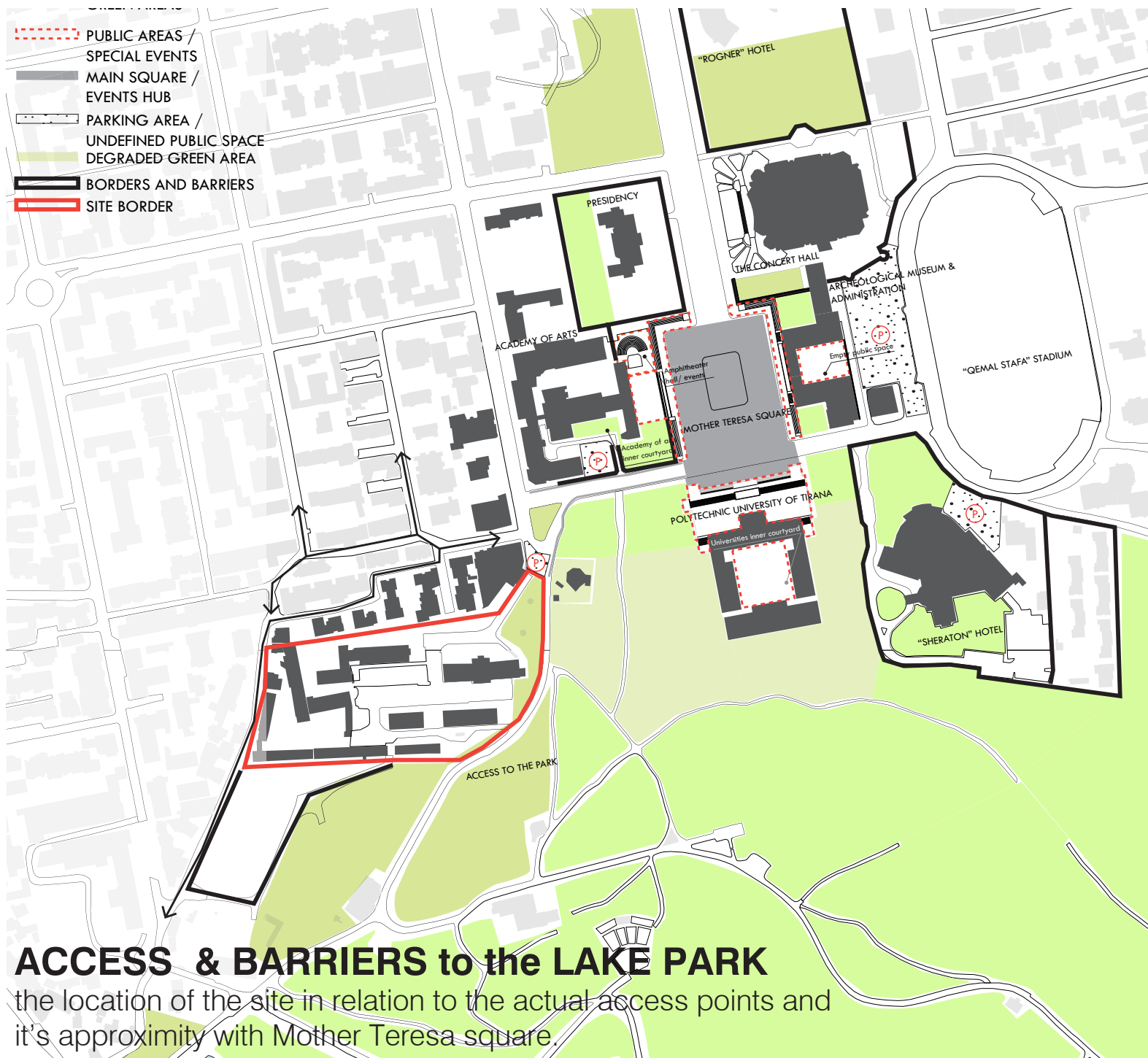
HYDE PARK, LONDON, UK  
350 ha

TIANANMEN SQUARE, BEIJING, CHINA  
380 ha

BRYANT PARK, NYC, USA  
58 ha

CENTRAL PARK, LONDON, UK  
58 ha

PARK DE LA VILLE, PARIS, FRANCE  
100 ha



## ACCESS & BARRIERS to the LAKE PARK

the location of the site in relation to the actual access points and it's proximity with Mother Teresa square.

WHAT IS A SUCCESSFUL PLACE?

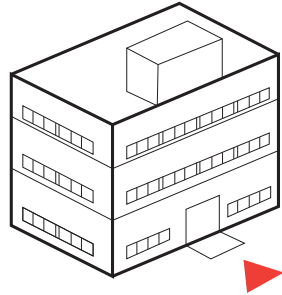
WHAT IS A SUCCESSFUL PUBLIC BUILDING?

A SUCCESSFUL PLACE & PUBLIC BUILDINGS MUST HAVE

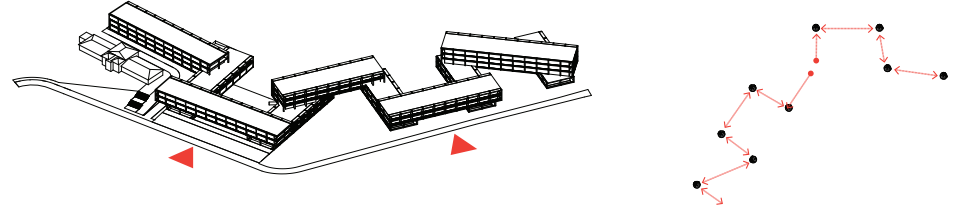
- ACCESS / FLEXIBILITY & LINKAGE
- COMFORT & IMAGE
- USES & ACTIVITIES
- SOCIAL INTERACTION

# STRATEGY

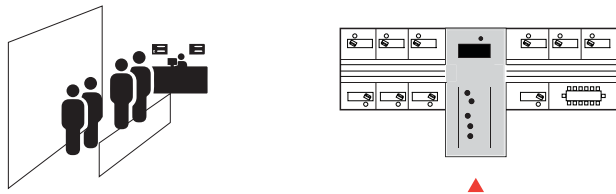
Entrance - one entrance per institution (reception)



Many entrances, flow circulation into the buildings  
Diferent vertical cores

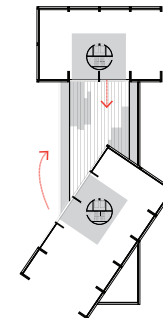


Waiting spaces - lack of waiting areas, people standing in lines



NO

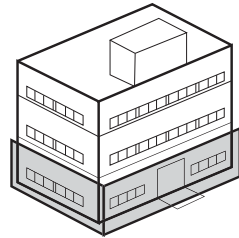
Waiting spaces as a public plaza - courtyards/backyards,  
friendly green spaces /roofs



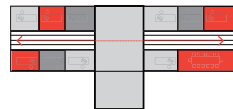
YES

# STRATEGY

Borders, no interaction with the building

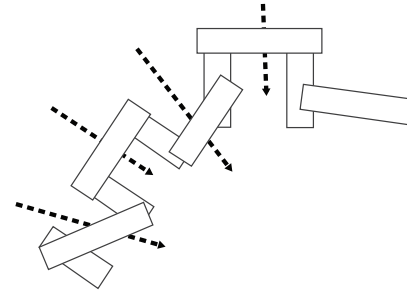


Visual isolation, no interaction within the staff, no interaction within the inside and outside

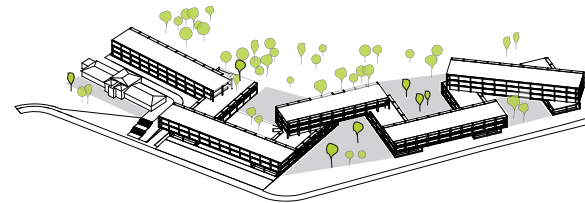


NO

porosity, transparency, interaction with the building as a casual passenger, green spaces (paths to the park)

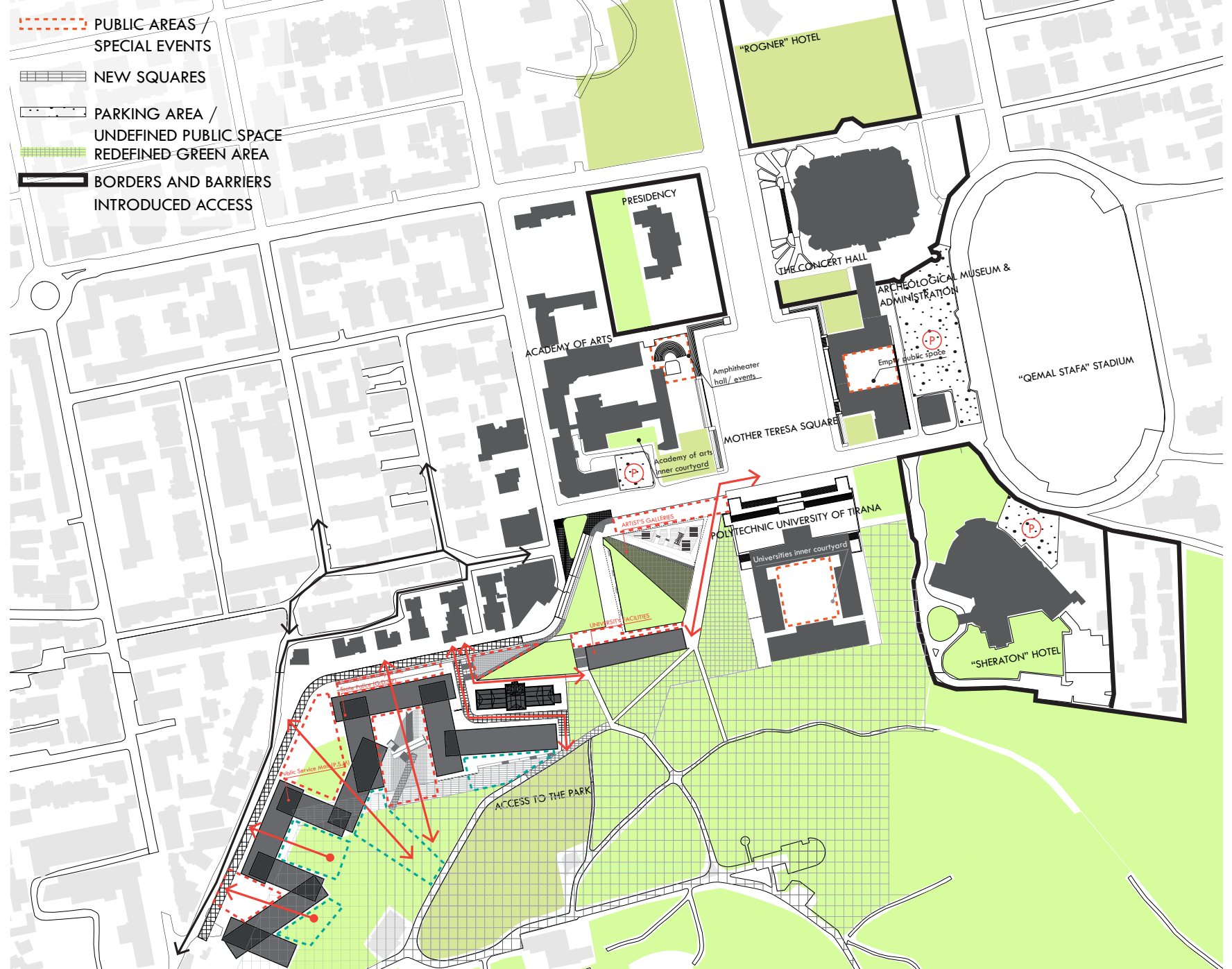


Interaction, common public spaces / Interaction within the staff



YES

- PUBLIC AREAS / SPECIAL EVENTS
- NEW SQUARES
- PARKING AREA / UNDEFINED PUBLIC SPACE
- REDEFINED GREEN AREA
- BORDERS AND BARRIERS INTRODUCED ACCESS



## NEW ACCESS to the LAKE PARK

the creation of a network of public spaces and parks along our site and the creation of several access points to the lake park

MASTERPLAN





LAKE PARK ENTRANCE F1



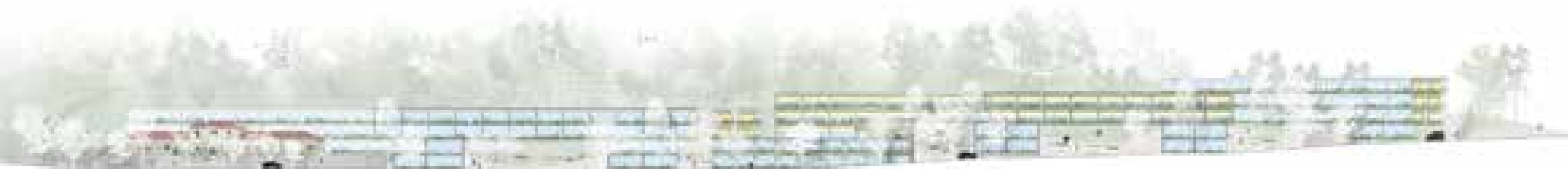
# A CHAIN OF GARDEN GATES



VIEW PARK - CITY



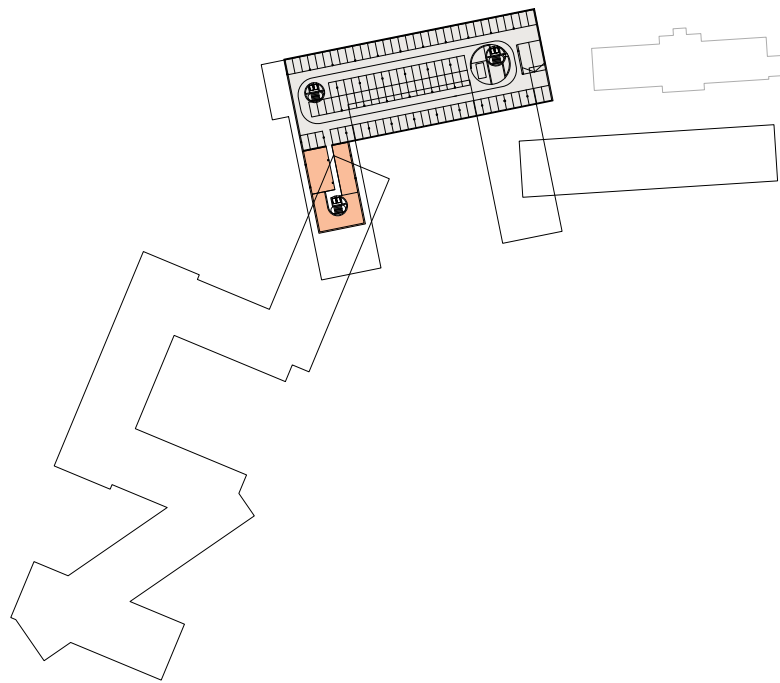
VIEW CITY - PARK





PLAN

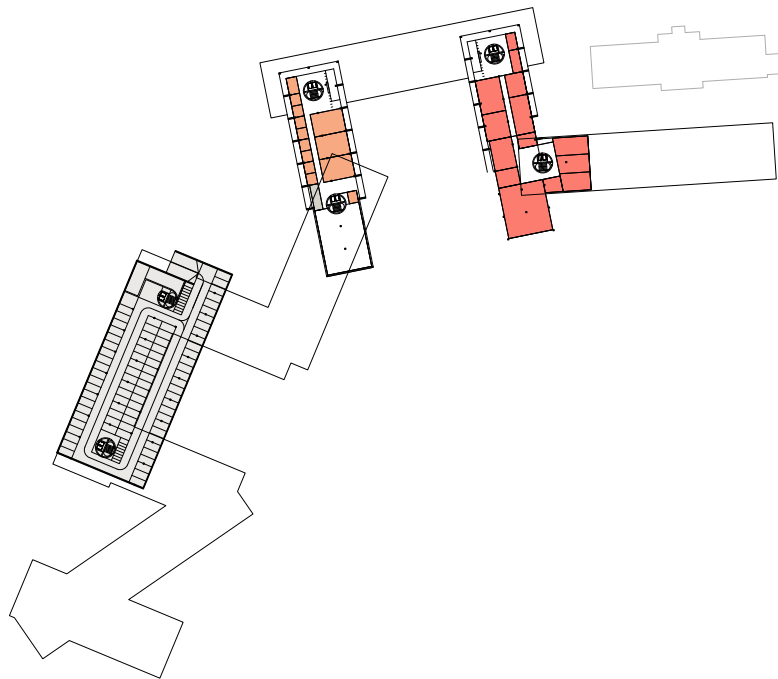




**Level -2**

■ -Vehicles Parking Garage

■ -Sanitary Centre



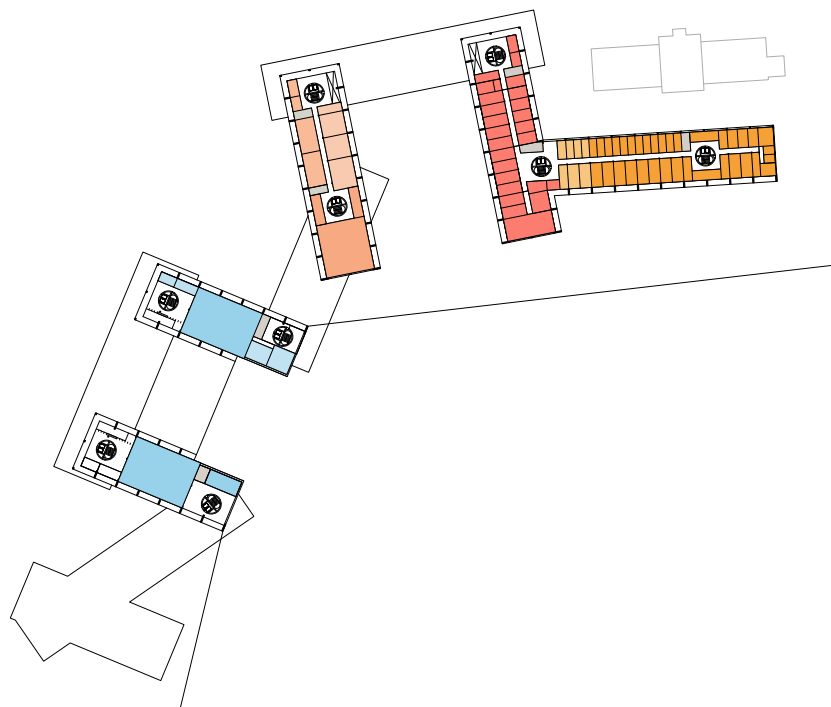
**Level 0**

- Directorate of Technology and Information
- Trading Halls
- Warehouse
- Technical Premises
- Server Halls

- Room for Citizens Service
- Library
- Wardrobe Premises
- Canteen
- Premises
- Archive

- Toilets

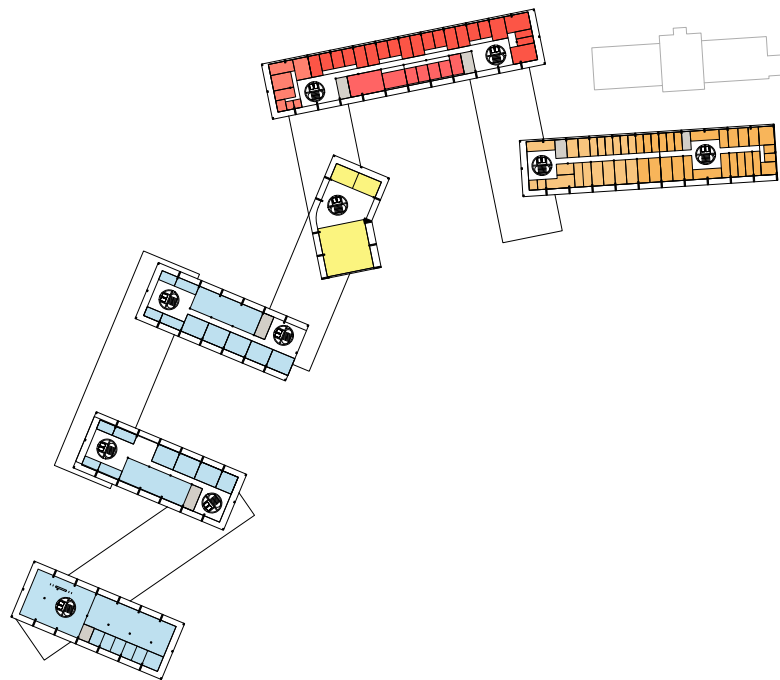
- Vehicles Parking Garage



**Level 1**

- Offices of Head of Sector
- Support Services Department
- Office for Specialists
- Department Directorates
- Head of Department
  
- Director office
- Directorate of Technology and Information
- Directorates Sectors
- Technical Premises
- Helpdesk
  
- Monitoring Camera Room
- Operational Room
- Meeting room
  
- Service area for P.S.M.
- Warehouse
- Server room
  
- Toilets



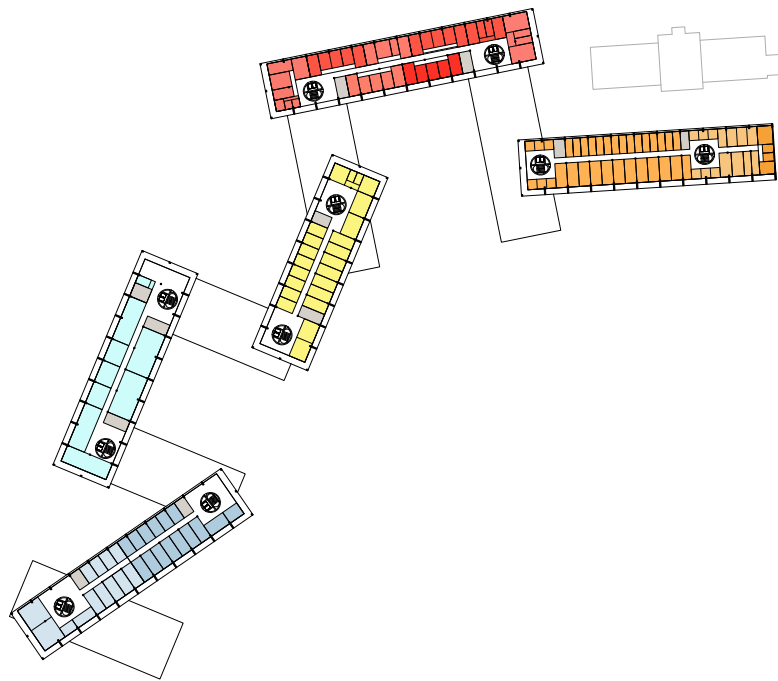


**Level 2**

- Boarder and Migration Department
- Department Directorates
- Head of Department
- Office for Specialist
- Offices of Head of Sector
- Public Safety and Security Department
- Offices of Head of Sector
- Department Directorates
- Head of Department
  
- Directorate of Forensic Police
- Special Sectors
- Examination Premises
- Dna
- Drugs Room
- Tracking
- HQ
- Lab Camera
  
- Meeting Room
- Staff's Array
  
- Service Area
  
- Toilets

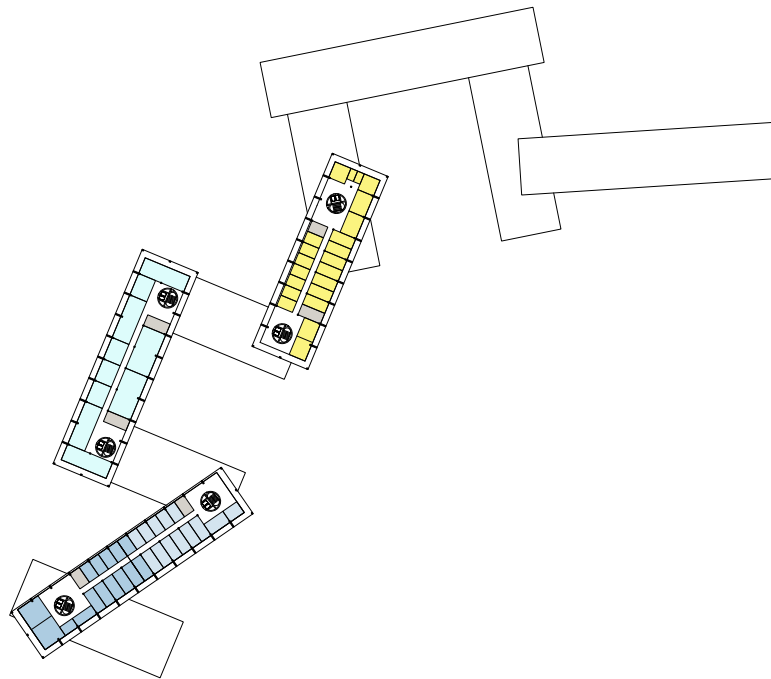
PUBLIC SERVICES HALL





**Level 3**

- Head of Department
- Departement Directorates
- Crime Investigation Department
- Office for Specialists
  
- The Cabinet
- Resting Space
- General Director
- Official
- Legal Directorate
- Financial Directorate
- Directorate of International Coordination
- Directorate of Strategic Study
- Directorate of Antiterror
- Directorate of Professional Standards
- Stamps
- Directorate of Collection and Elaboration of Data
  
- Burreau of Investigation
- Secretary
- Official
- Meeting Room
- Chiefs Sector
- Office for Specialists
  
- General Director
- Meeting Room
- Coordination Office
- Director Office
- Protocol and Archive
  
- Department 1
- Department 2
  
- Toilets



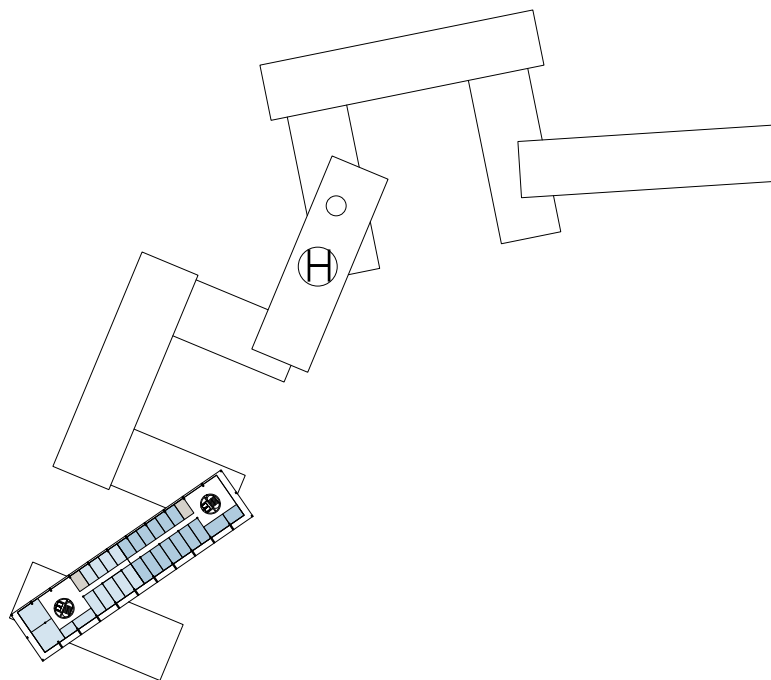
**Level 4**

- Official
- Meeting rooms
- Office for specialists
- Chief's sector


- General Director
- Director Office
- Coordination Office
- Protocol and Archive


- Department 3
- Department 4

- Toilets



**Level 5**

 -Department 5

 -Department 6

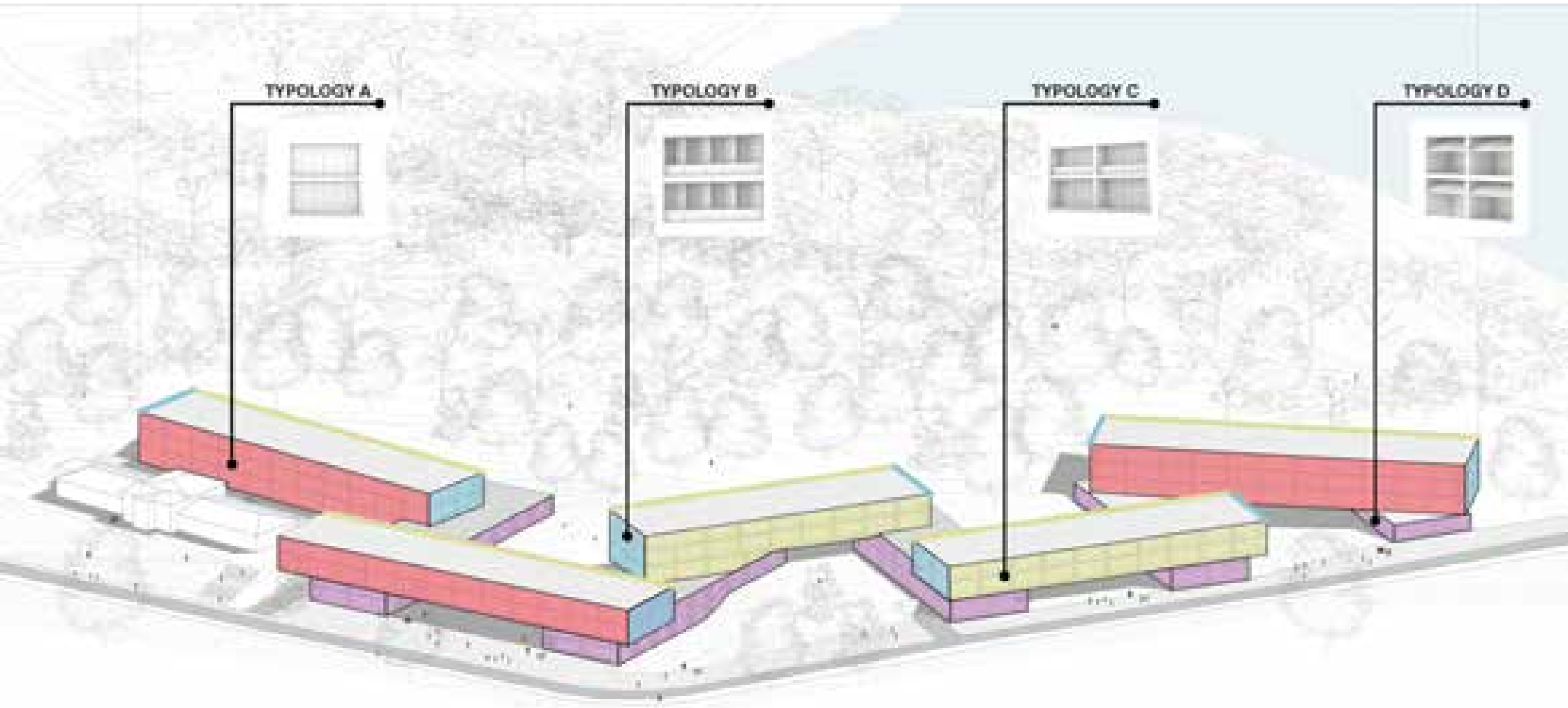
 -Toilets

PUBLIC SERVICES F2



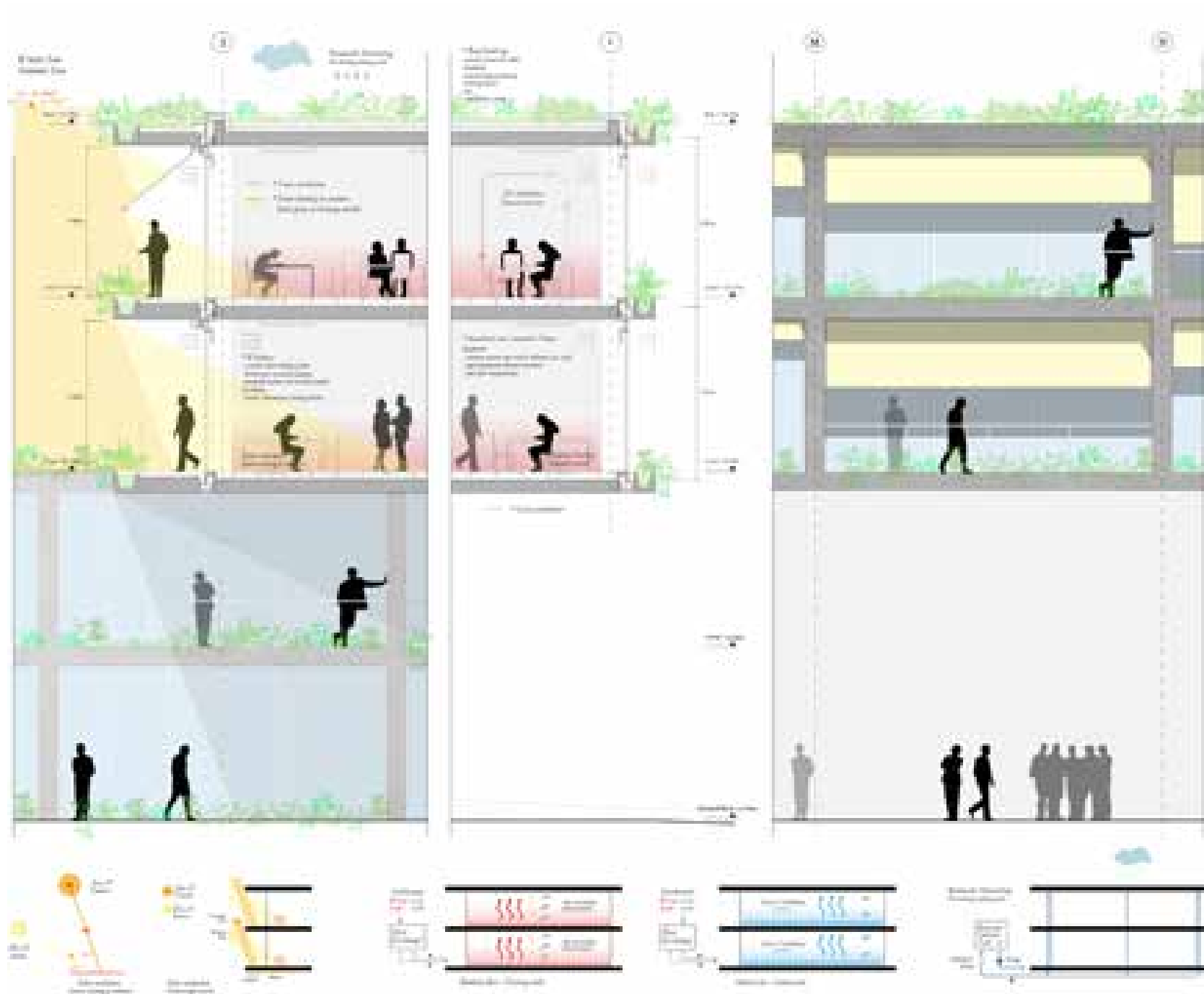


# FACADE TYPOLOGIES



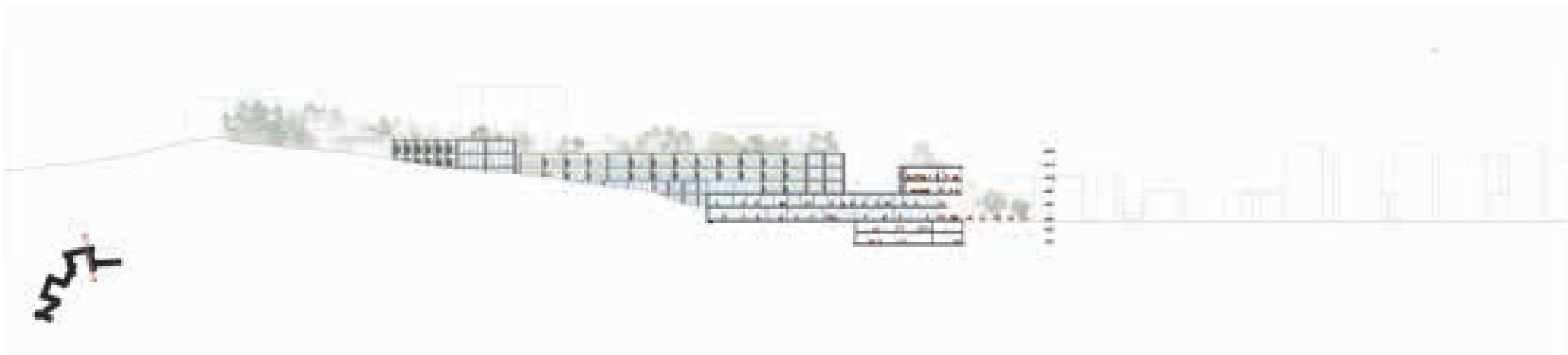


# ENVIRONMENTAL SCHEME

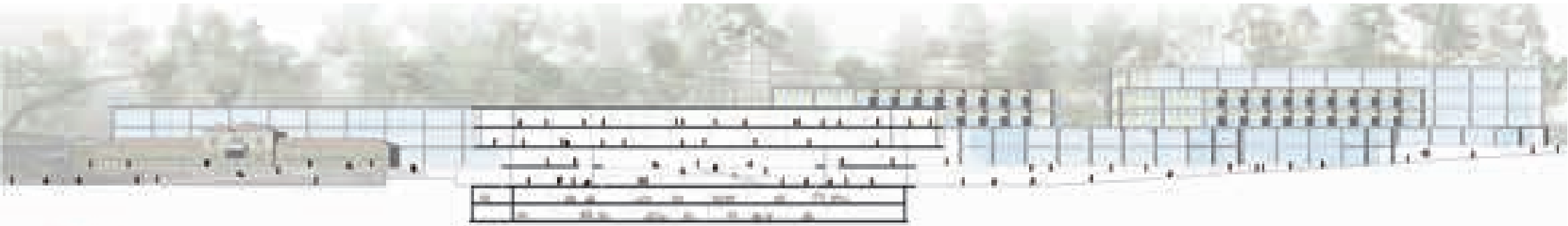




# SECTIONS



# SECTIONS



# VEGETATION



