

MAPPING THE ARCHITECTURAL PROCESS ONTO A LINEAR NARRATION IS A DIFFICULT, REDUCTIONIST AND MOSTLY ABSURD EFFORT. BUT WE WILL ATTEMPT TO ACHIEVE IT AS SUCCESSFULLY AS POSSIBLE. INDEED, DESIGNING A PROJECT IS BEST DESCRIBED AS A CONSTANT BACK-AND-FORTH PROCESS: ONE, WHICH TAKES ON A 2-DIMENSIONAL ASPECT OF MAPPING A SET OF DIVERGING IDEAS. VERY SIMILARLY TO COMMITTING OR SOLVING A CRIME, IT IS A CREATIVE PROCESS. ON THE OTHER HAND, PRESENTING THE PROJECT IS ANALOGOUS TO EXPOSING THE FACTS IN THE COURTROOM. ONE MUST, IN A LINEAR FASHION, DEVELOP THE ARGUMENTS OF THEIR CASE. CREATIVITY IS NOT AN ISSUE ANYMORE: THE CRIME IS COMMITTED.



COURTROOMS DON'T FIT IN THE EXISTING BUILDINGS.

THE FIRST MATTER WE MUST ADDRESS IS THE EXISTENCE OF BUILDINGS ON THE SITE. WE ARE GIVEN A PROGRAM AND DECENCY DEMANDS THAT WE VERIFY ITS COMPATIBILITY WITH WHAT WE ALREADY HAVE. WHAT PREEXISTS IS AN ASSEMBLAGE OF A RATIONALIST STRUCTURE AND IN IMMEDIATE PROXIMITY, A SET OF EXTENSIONS. THEIR STRUCTURE IMPLIES A SPECIFIC DISTRIBUTION: A NUMBER OF ROOMS DISTRIBUTED BY A SINGLE LATERAL OR CENTRAL CORRIDOR. OUR RESEARCH SHOWS THAT THE MAIN SPACE OF THE COURTHOUSE – THE COURTROOM – CALLS FOR A DOUBLE DISTRIBUTION WHERE THE JUDGING MEMBERS DO NOT CROSS THE PATH OF THE REST OF THE ATTENDANCE. IN ADDITION, COURTROOMS DON'T FIT IN THE EXISTING BUILDINGS. THEIR DIMENSIONS ARE FIXED BY USE AND ARE UNBENDABLE. ON TOP OF THE AREA THEY OCCUPY, THEY MUST AMEND TO A CERTAIN SYMMETRICAL ORDER: THEY CANNOT BE BENT IN ONE DIRECTION OR THE OTHER. THE ONLY PART OF THE PROGRAM, WHICH CAN BE FITTED INSIDE THESE HISTORICALLY CLASSIFIED BUILDINGS, IS THE SCHOOL OF MAGISTRATES. BUT IT IS NOT AS EASY AS SIMPLY CHANGING THE SIGN “FACULTY OF GEOLOGY” TO “SCHOOL OF MAGISTRATES”. IF WE SIMPLY SUM UP THE TOTAL AREA OF THIS LAST PROGRAM, WE LARGELY EXCEED THE AREA OF THE ACTUAL BUILDING. AFTER THOROUGHLY REVISING THE INFRASTRUCTURE, THE SCHOOL OF MAGISTRATE COMFORTABLY FITS INSIDE THE “BANANA”.



AT THIS POINT, WE ARE LEFT WITH A SIMPLE CHOICE: TO DESTROY WHAT WE ARE ALLOWED TO OR NOT TO DESTROY IT. AFTER CAREFUL ANALYSIS OF THE AMORTIZED BUILDING BLOCKS (MAINLY THE CENTER BUILDING AND ITS FOOTBRIDGE), WE UNDERSTAND THAT THEY ARE WORTH MAINTAINING.

WE SUGGEST CAREFULLY CUTTING THROUGH THE CENTER BLOCK: IT WILL LOSE SOME OF ITS UPPER FLOORS AND THE BRIDGE LINKING TO THE MAIN CURVED BUILDING WILL BE SECTIONED, RENDERING THE TWO AUTONOMOUS FROM EACH OTHER. ONE COULD EASILY IMAGINE TAKING A BREAK FROM WORK, STUDY OR A RUN IN THE PARK AND HAVING LUNCH HERE.



NOW WE HAVE A SITE.

ONCE THIS IS ACHIEVED, WE CAN START A SECOND PROJECT. INDEED, WE HAVE A SITE: HILLS, TERRACES, A LANDSCAPE, AND EXISTING BUILDINGS... AND A PROGRAM: THE SUPREME COURT.

LET US FIRST DESCRIBE THE SITE. ON AN EXCITING TOPOGRAPHY, LAY TWO BUILDINGS. ON THE NORTH PART, CLOSER TO THE CITY, THE SCHOOL OF MAGISTRATES DOMINATES A FLAT AREA, A SORT OF TERRACE AND CASTS ITS SHADE UPON IT. ON THE SOUTH PART, INSIDE THE PARK, AND SEPARATED FROM THE SCHOOL BY A SORT OF VALLEY, A LOW BUILDING INTERACTS WITH THE GREEN ENVIRONMENT. TWO ASPECTS OF TIRANA COEXIST WITHOUT CONFUSION BETWEEN THEM: THE METROPOLITAN EDUCATIVE INSTITUTION AND THE DIRECT RELATION TO NATURE.

ONCE WE HAVE OBSERVED THIS CONDITION, THE PLACEMENT OF THE SUPREME COURT BECOMES OBVIOUS: ITS POSITION IS ON THE NORTH SIDE, ON THE TERRACE. THIS PLACEMENT IS NOT NAIVELY JUSTIFIED BY THE PROXIMITY TO THE SCHOOL OF MAGISTRATES BUT BY ITS PROFOUND URBAN IDENTITY AS AN INSTITUTION.



WHEN ADDRESSING THE GIVEN PROGRAM, ONE COULD TRY TO SKETCH A CONCEPTUAL NOTION OF JUSTICE OR TO INNOVATE SPATIALLY AND FORMALLY IN THE DESIGN OF THIS BUILDING. BUT WE FEEL THESE ATTEMPTS ARE BOND TO FAILURE.

TO START THE PROCESS OF DESIGNING, WE NEED TO UNDERSTAND THE IDEA OF JUSTICE AS THE UNCREATIVE ANALYSIS OF THE PAST. TO THE CONTRARY, PLOTTING OR SOLVING A CRIME IS A CREATIVE PROCESS, ONE THAT ENVISIONS A MULTIPLICITY OF SCENARIOS FULLY EMBODIED IN THE NOTORIOUS MOVIE SCENE OF THE YARN WORK, WHEN CRIMINAL AND INVESTIGATOR PLAY A SORT OF SYNCHRONOUS DANCE AROUND ACTION. WHERE CRIME-PLOTTING AND -SOLVING REQUIRE A 2-DIMENSIONAL IMAGE, JUSTICE, AFTER THE INVESTIGATION HAS COME TO AN END, MUST LINEARLY OBSERVE ONE SINGLE THREAD OF THE YARN WORK AND VERIFY ITS SOLIDITY THROUGH PROOF, NOT CREATIVELY ACTING BUT DEFINITELY NAMING. WE DECIDE TO APPLY THIS PRINCIPLE TO THE DESIGN OF THE SUPREME COURT. WE THUS ENTER THE PROCESS OF DESIGNING A BUILDING WITHOUT CREATIVITY. IT IS NOT TO SAY THAT THE DESIGN PROCESS IS UNCREATIVE; THIS WOULD BE IMPOSSIBLE, BUT THE BUILDING MUST EMBODY UNCREATIVENESS. IT MUST BE AN INSTANTIATION OF A KNOWN MODEL; THERE WILL BE NO SINGULAR EFFECT.

THE DIVISION IS CLEAR AND THREE-FOLDED. THE SALLE DES PAS PERDUS IS A PUBLIC SPACE. THE COURTROOMS HOST THE SPACE OF THE SENTENCE ISOLATED FROM THE OUTSIDE WORLD. THE ADMINISTRATION AND OFFICE SPACE IS ONLY ACCESSIBLE TO THE STAFF.



THIS TRIPLE DIVISION IMPLIES A GIVEN PLAN. WE STRIVE TO INTERPRET IT IN A MOST COMPACT MANNER: NO WASTE AND RECTANGULAR. THE PROJECT MUST NOT BE MORE THAN THE EXPRESSION OF ITS FUNCTION.

THE FAÇADES ELIMINATE ANY NOTION OF FANTASY, THEY SEPARATE FROM THE OUTSIDE WORLD, THE SOLE FUNCTION OF THE WINDOWS ARE TO SHED NATURAL LIGHT INSIDE, THEIR DESIGN IS TRACED ON THE MODEL OF THE ONES PRESENT ON THE SCHOOL OF MAGISTRATES AND SIMPLY SCALED ACCORDING TO NEEDS.

THE SUPREME COURT IS A COST-EFFECTIVE BUILDING, THOUGH NEVER FRAGILE.

WHILE IT MAY APPEAR AS ALMOST DULL, THE ARRANGEMENT OF THIS BLOCK PRODUCES FOUR DIFFERENT SPATIAL CONDITIONS ON OUR SITE:

- ON THE SOUTH SIDE, THE ENTRANCE FACES THE SCHOOL OF MAGISTRATES**
 - ON THE WEST SIDE, A SMALL TERRACE FACES THE WOODS**
 - ON THE NORTH SIDE, A MORE TRANSPARENT FAÇADE DOMINATES THE PINE TREES AND THE CITY**
 - ON THE EAST SIDE, A PLAZA SERVES AS A PUBLIC SPACE FOR BOTH THE SCHOOL AND THE COURT**
- TO ACCOMMODATE THIS PLAZA, THE PARKING SPACE IS PLACED UNDER THE TERRACE. THE ACCESS IS CAST OFF EASTWARDS.**

WE HAVE GENERATED A WELL-DEFINED URBANITY.

	<u>SURFACE</u>	<u>TYPE</u>	<u>COST</u>
SOIL TREATMENT	2 500m ²	--	112 500€
DEMOLITION	2 850m ²	DEMOLITION	105 450€
INFRASTRUCTURE	3965m ²	CONSTRUCTION	51 545€
PARKING UNDER THE TERRACE AND THE SUPREME COURT	1 300m ²	CONSTRUCTION	286 000€
SUPREME COURT + CONFERENCE HALL OF THE SCHOOL OF MAGISTRATES	3 880m ²	CONSTRUCTION	774 000€
SCHOOL OF MAGISTRATES	3 520m ²	RENOVATION	492 800€
RESTAURANT	500m ²	RENOVATION	70 000€
LANDSCAPE	5 728m ²	LANDSCAPE	143 200€
TOTAL			1 749 495€

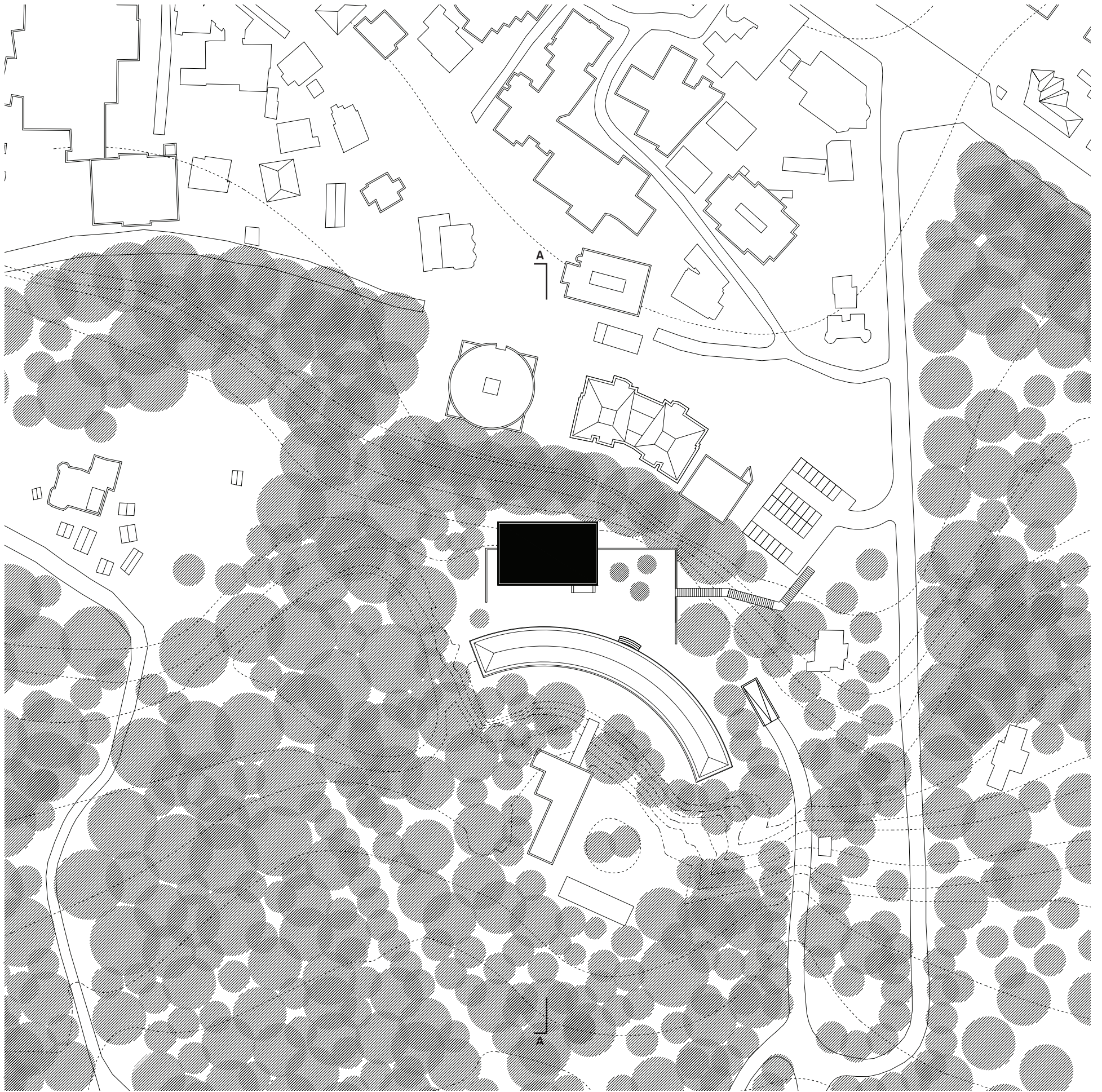
FINANCIAL ESTIMATION

COMPETITION PANELS

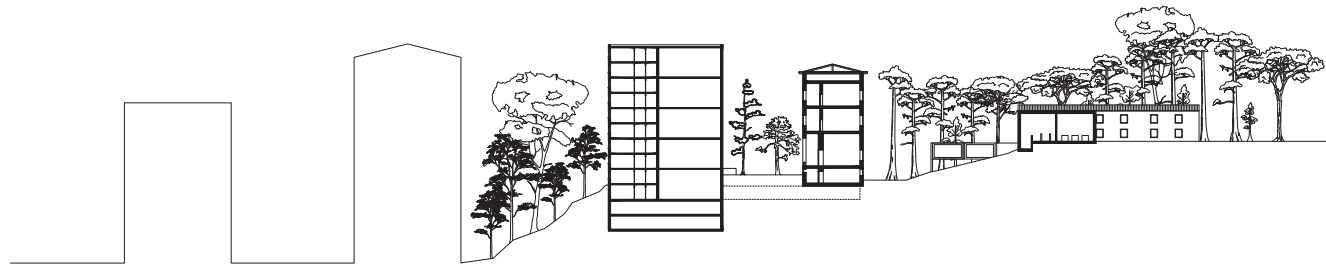


**THE SUPREME COURT AND THE SCHOOL OF MAGISTRATES
TIRANA, ALBANIA**

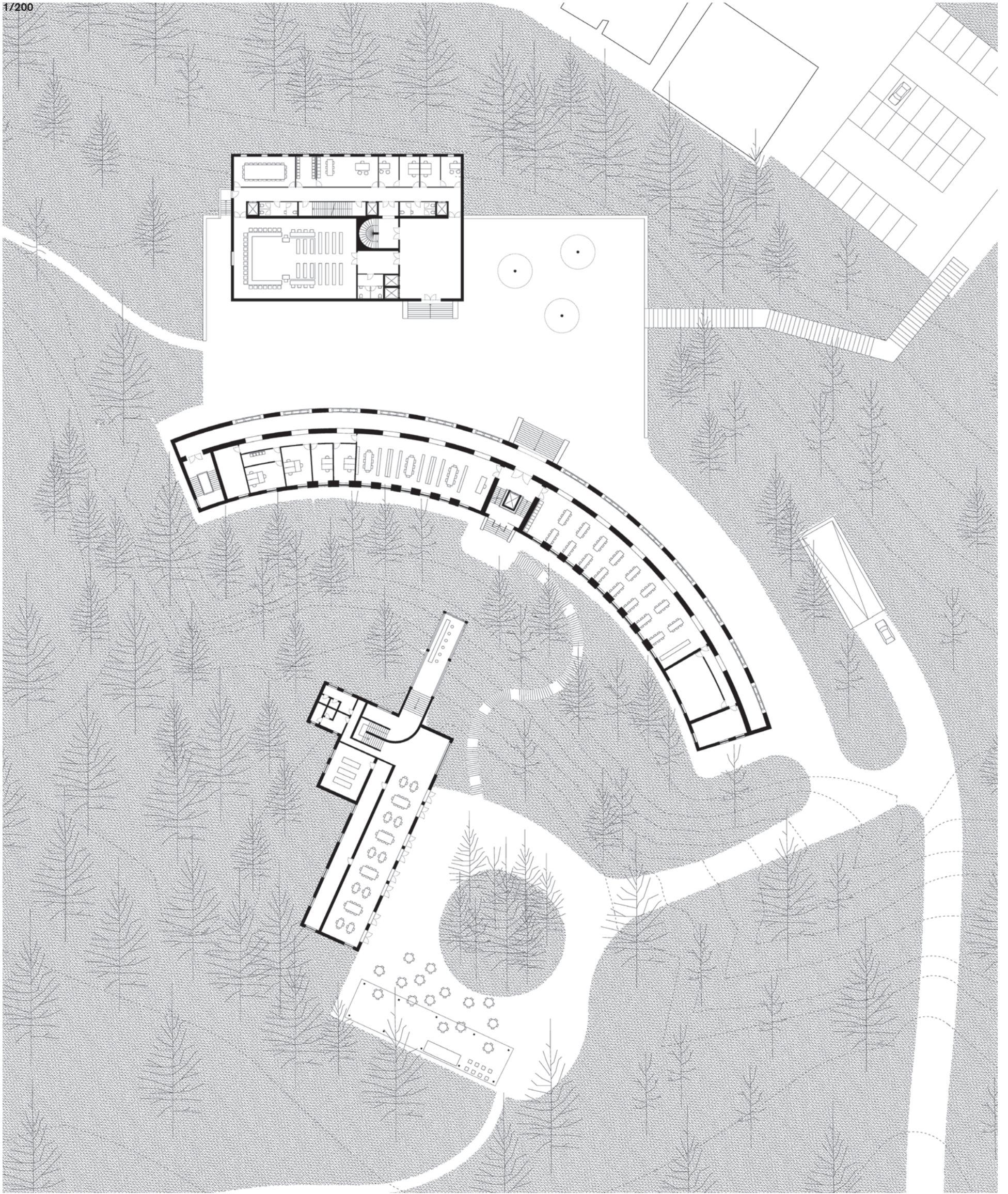




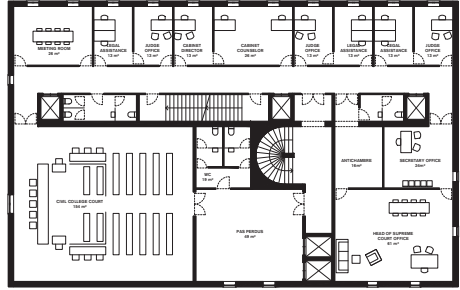
ROOF PLAN



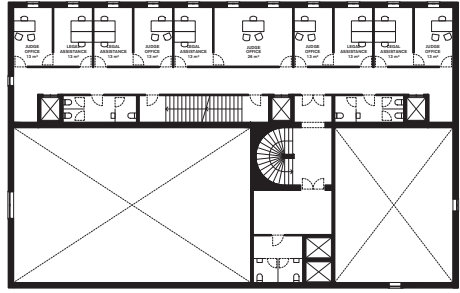
SECTION AA



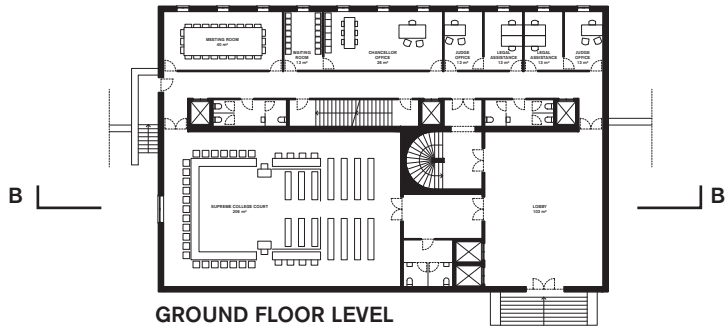
GROUND FLOOR PLAN



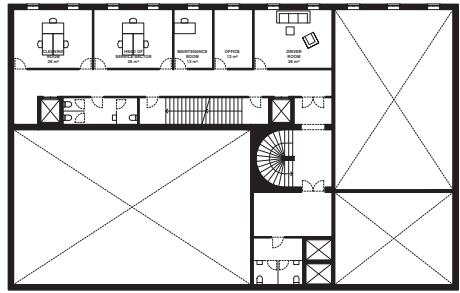
LEVEL 2



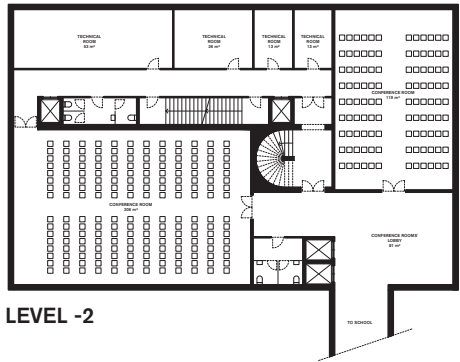
LEVEL 1



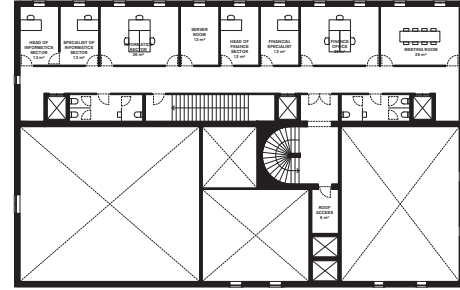
GROUND FLOOR LEVEL



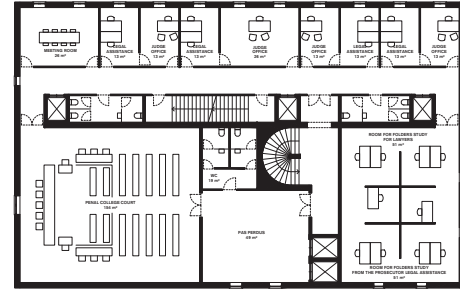
LEVEL -1



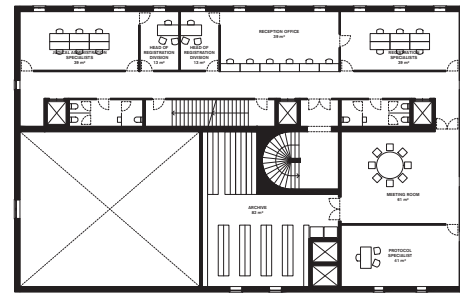
LEVEL -2



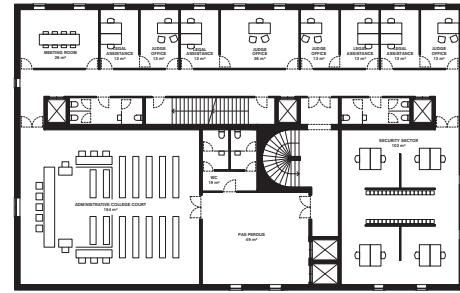
LEVEL 7



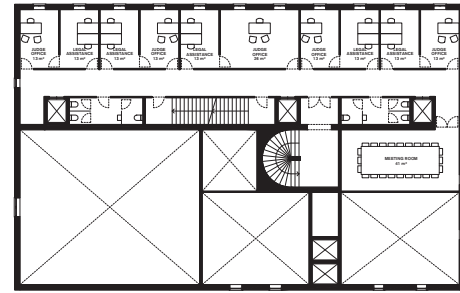
LEVEL 6



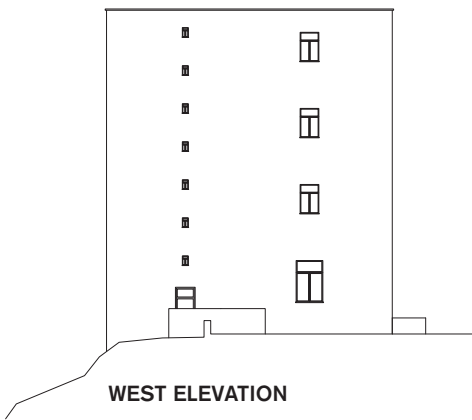
LEVEL 5



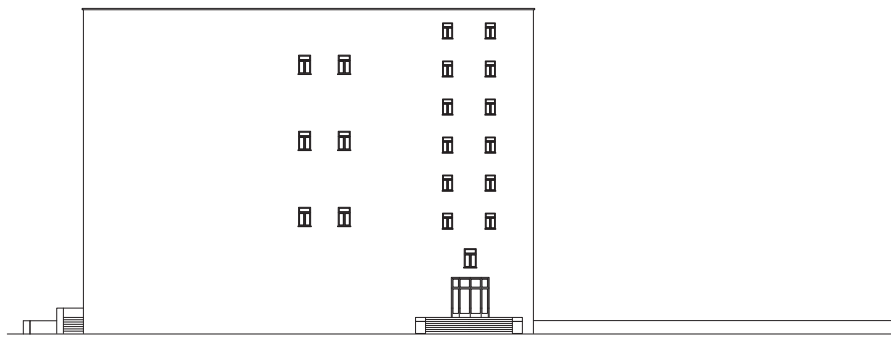
LEVEL 4



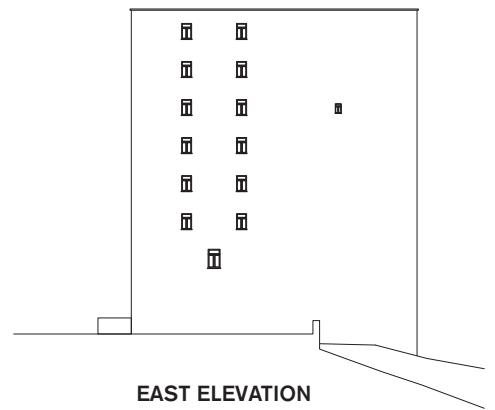
LEVEL 3



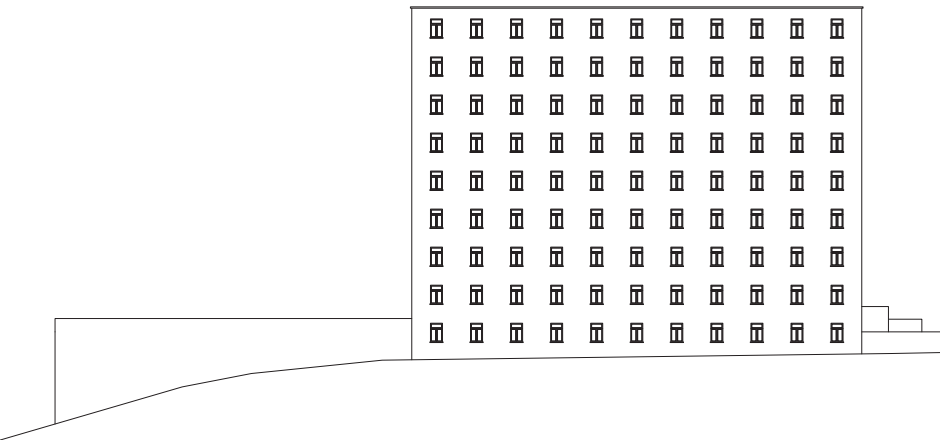
WEST ELEVATION



SOUTH ELEVATION



EAST ELEVATION

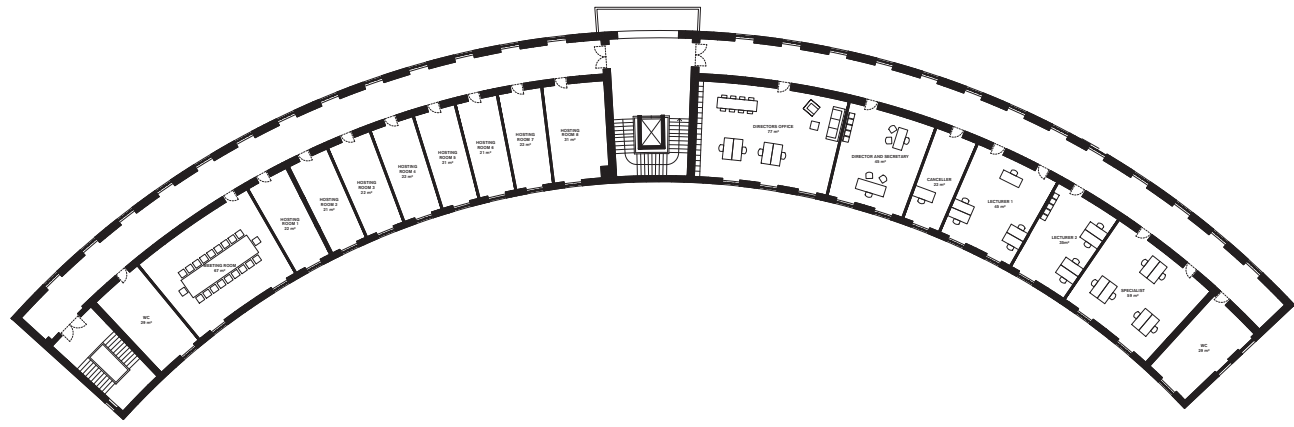


NORTH ELEVATION

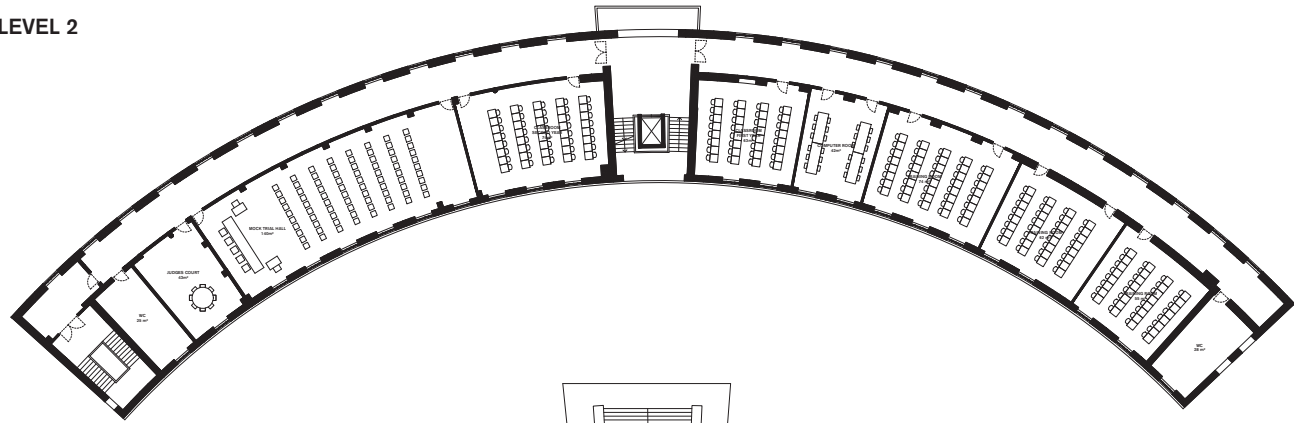


SECTION BB

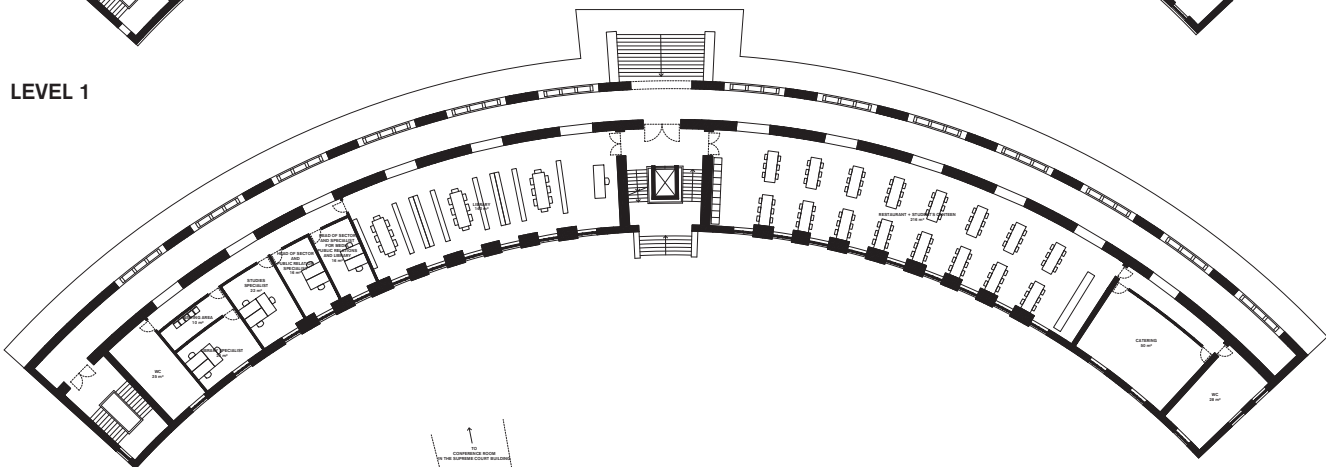
THE SUPREME COURT



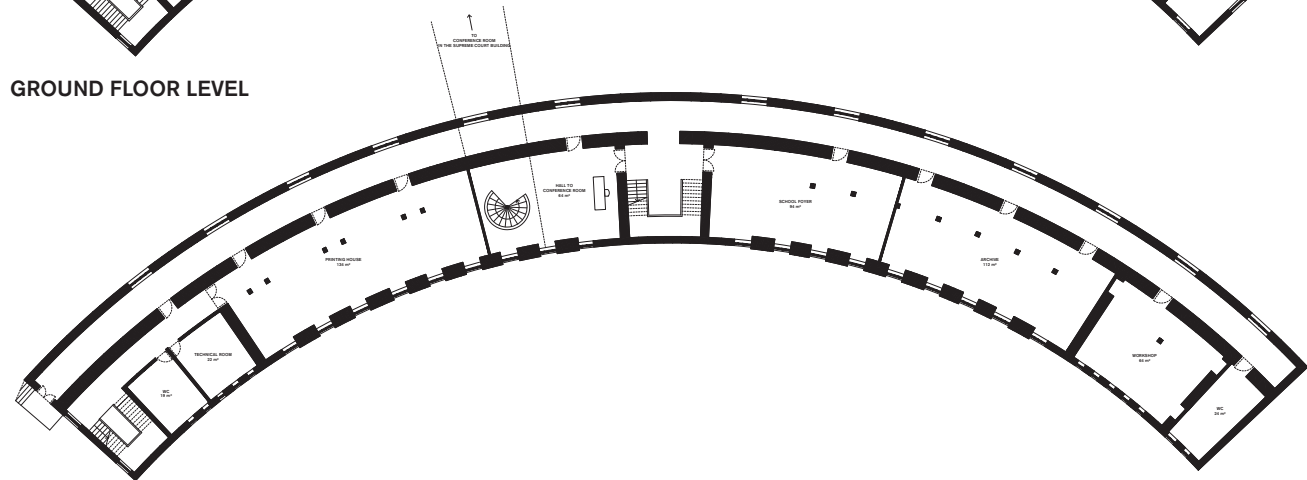
LEVEL 2



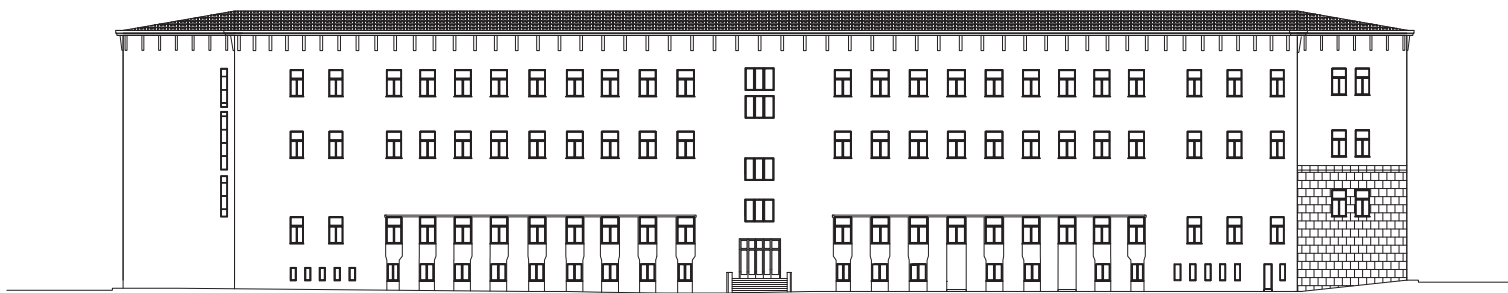
LEVEL 1



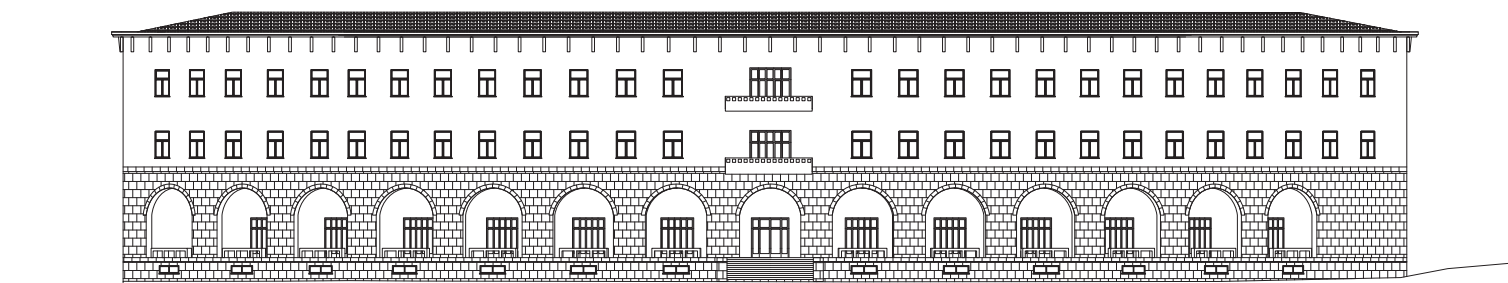
GROUND FLOOR LEVEL



LEVEL -1

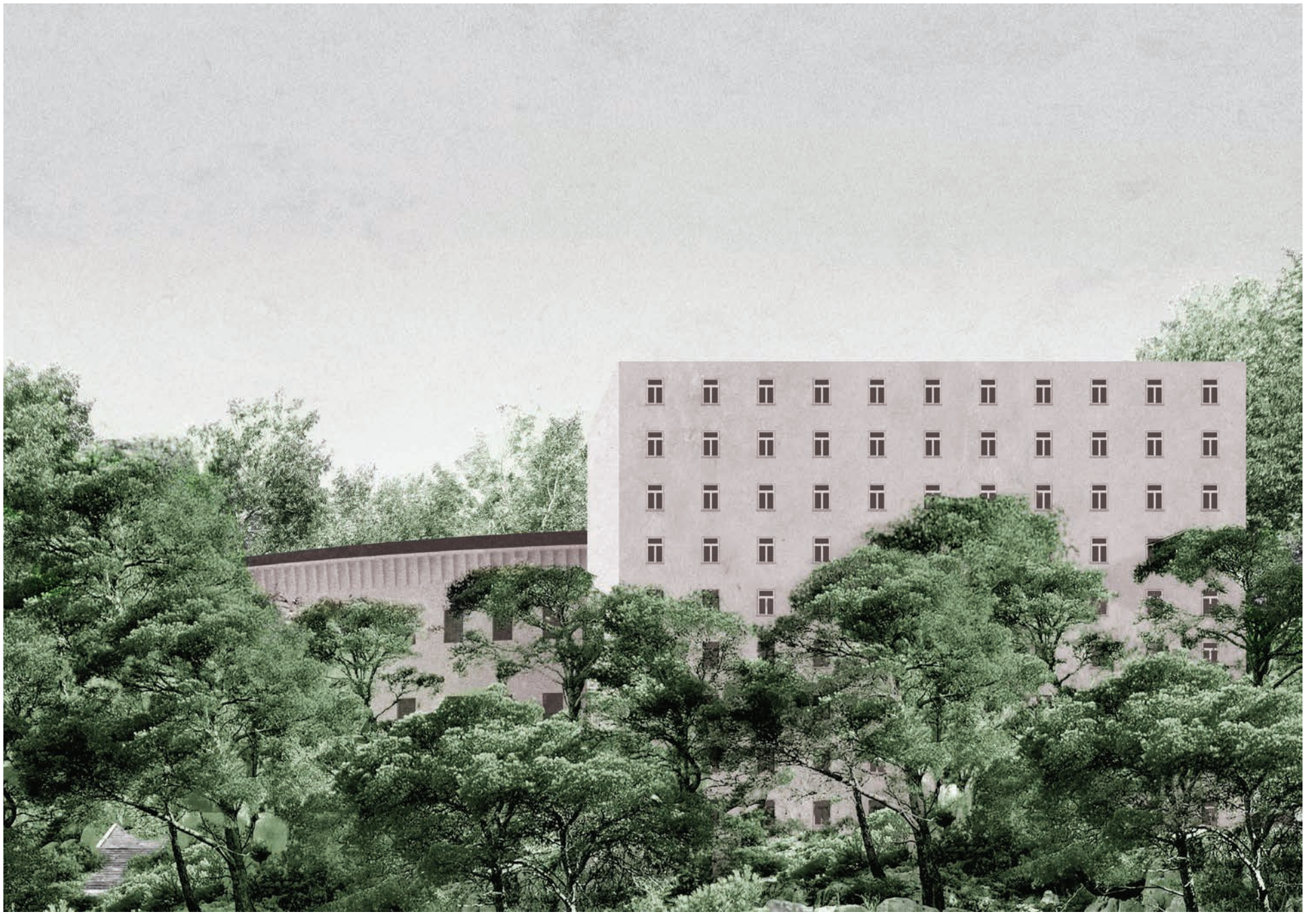


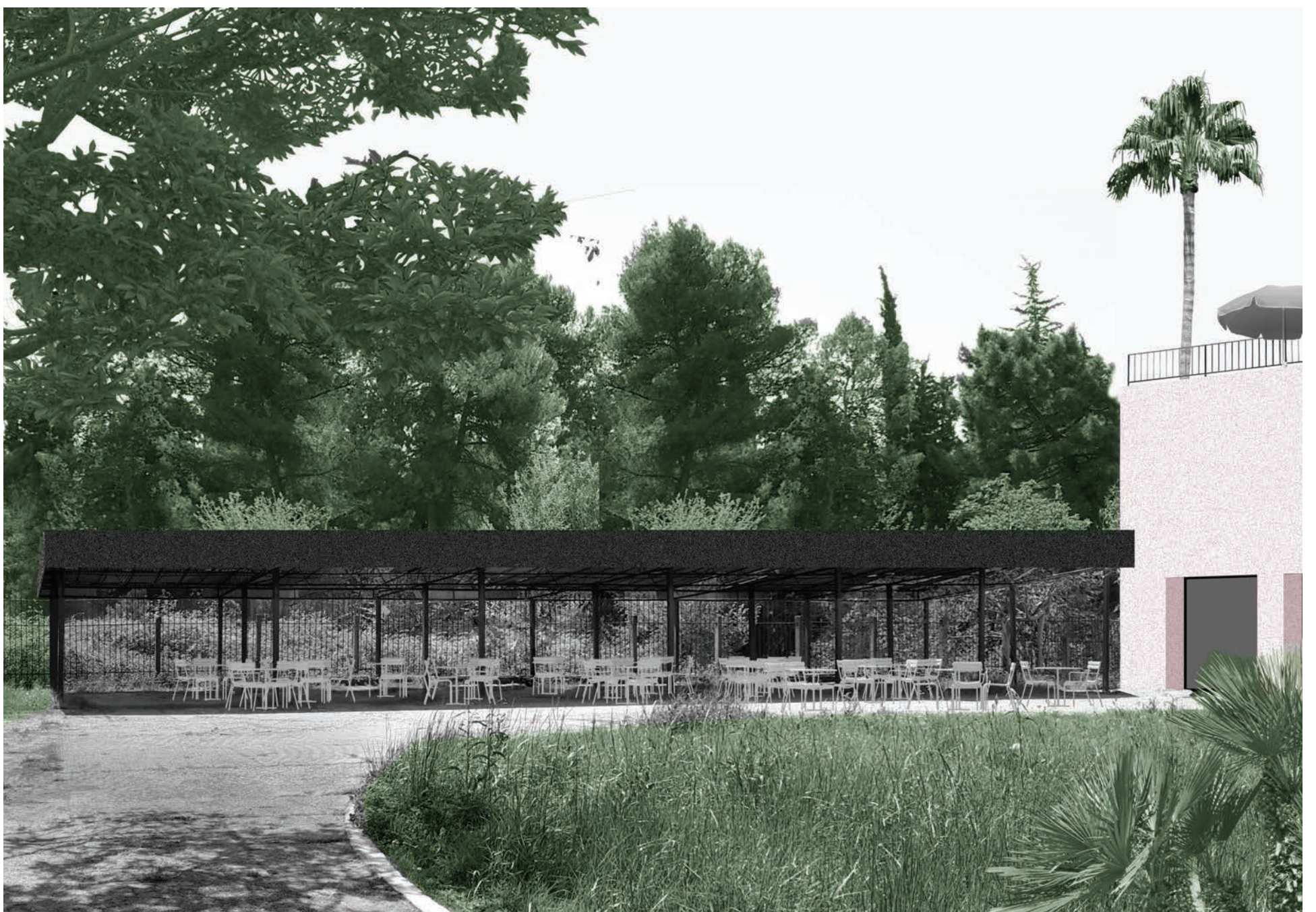
SOUTH ELEVATION



NORTH ELEVATION

THE SCHOOL OF MAGISTRATES





THOMAS RAYNAUD (BUILDINGBUILDING)
ARCHITECT
LANDSCAPE ARCHITECT
ATTORNEY OF THE ECONOMIC OPERATOR

ELIAS GUENOUN ARCHITECTURE
ARCHITECT
CULTURAL HERITAGE EXPERT

MAX TURNHEIM, ADRIEN DURRMEYER (UHO)
ARCHITECTS

STUDIO REBUS
LOCAL ARCHITECT
CONSTRUCTION ENGINEER
ESTIMATOR

CONTACT
CONTACT@BUILDINGBUILDING.ORG

CREDITS