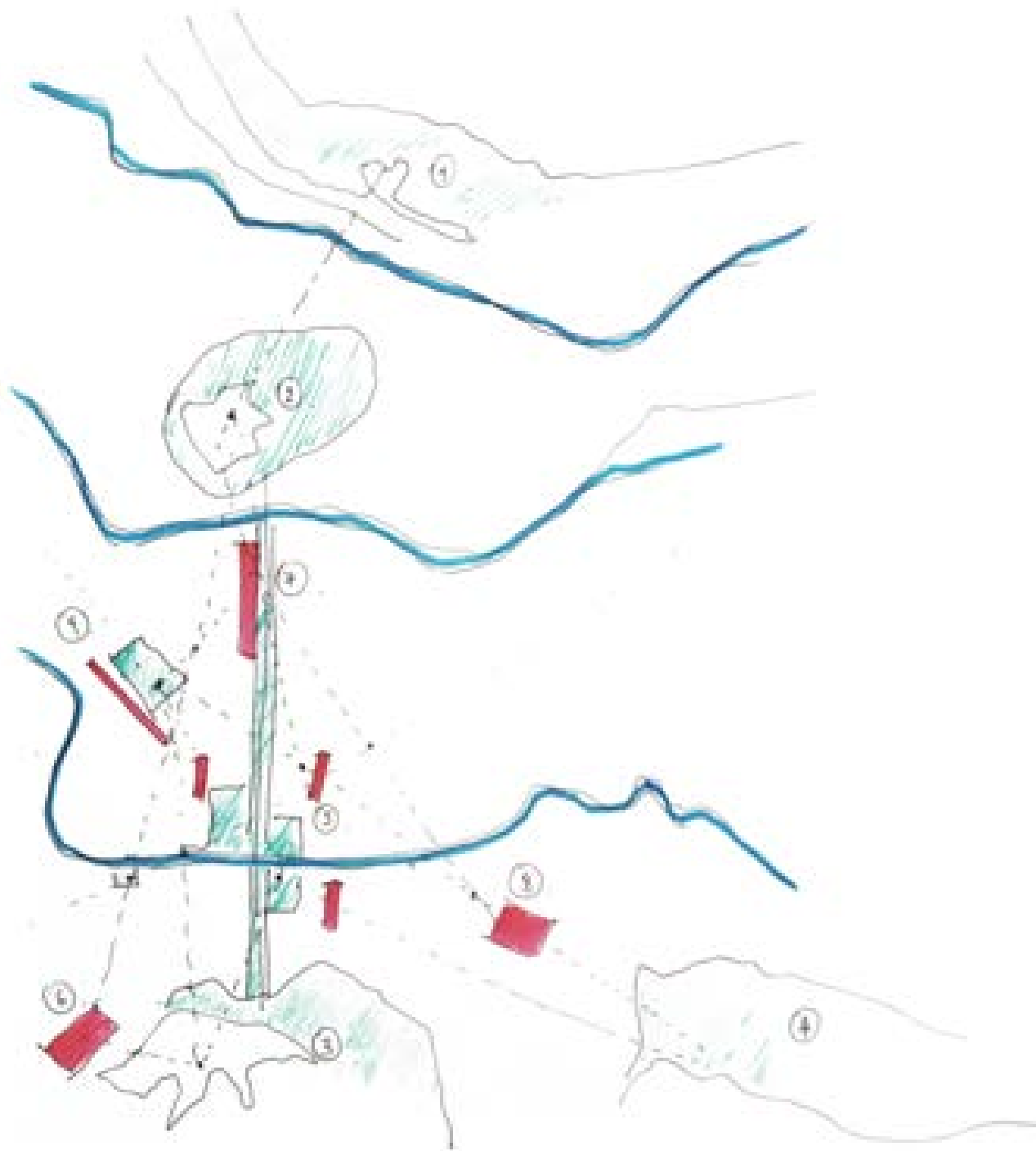


THE MASTERPLAN OF THE ENTRANCE TO THE TIRANA PARK AND  
ARCHITECTURAL PROJECT IDEAS FOR TWO PUBLIC BUILDINGS:

THE PUBLIC SERVICE CENTER AND THE GENERAL DIRECTORATE OF THE STATE POLICE

# EXTENDING LAKE PARK BLENDING CITY WITH NATURE

**MBA/S**



# Blending City with Nature - Extending Lake Park

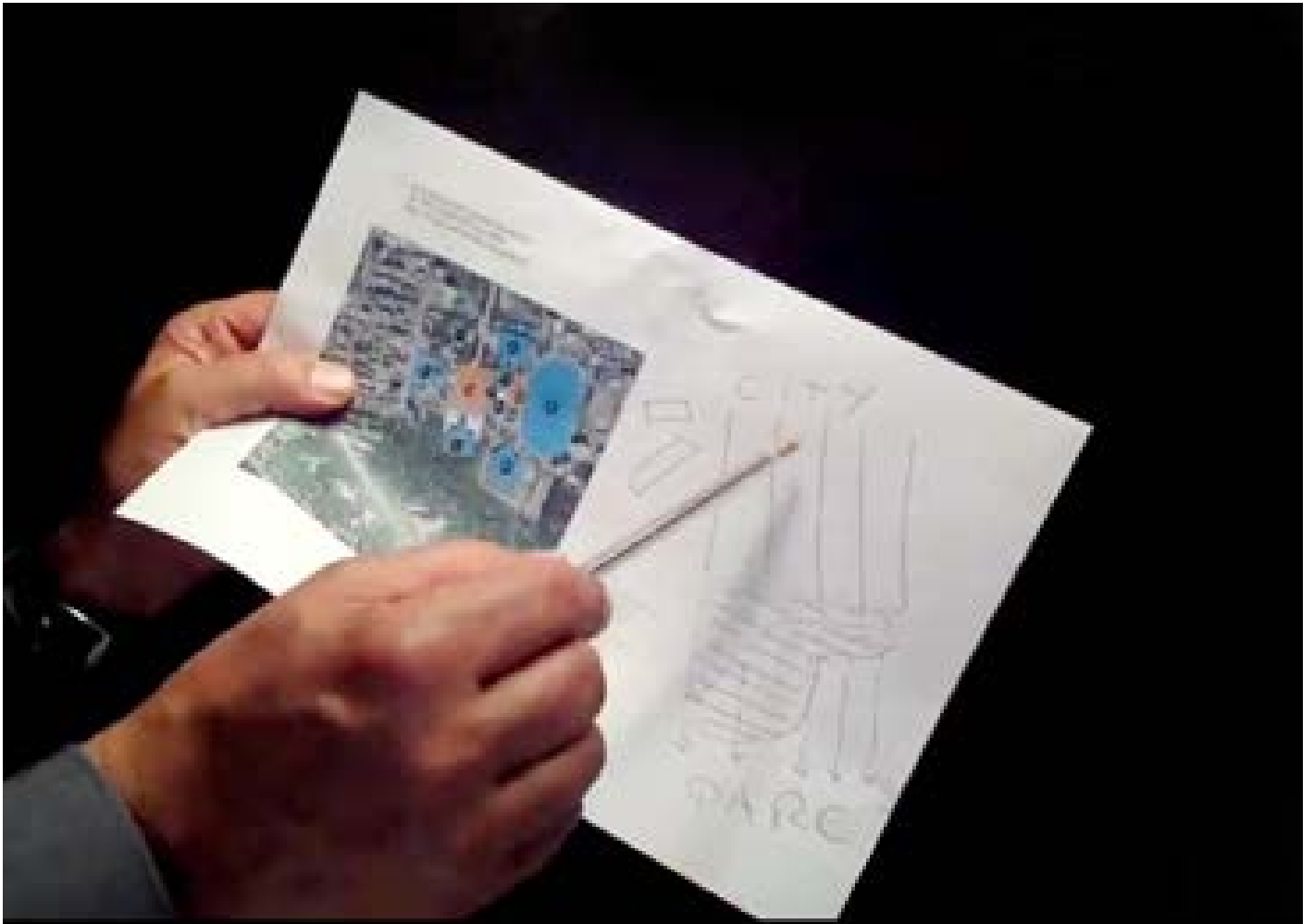
## Introduction

Lake Park is an important natural park and recreation area for the city and has a strong presence in the memory of the city since the creation of Tirana's historic axis during the 1930's by the Italian Architect Armando Brasini, and the continuation with the "Dopo Lavoro" Square that was later named as the Mother Teresa Square.

The accessibility to the Park has always been a problem - through the Park's two entrances - one located close to "Fryderyk Chopin" Square in the end of the Boulevard and the other located towards the South very close to the Dam of the Lake in the end of "Sami Frasherri" Street.

We propose to extend the potential of the existing urban fabric of Tirana and of Lake Park to play both a historic and a catalytic role in creating a new relationship between the city and the park.

What should be nature of this relationship between city and park?

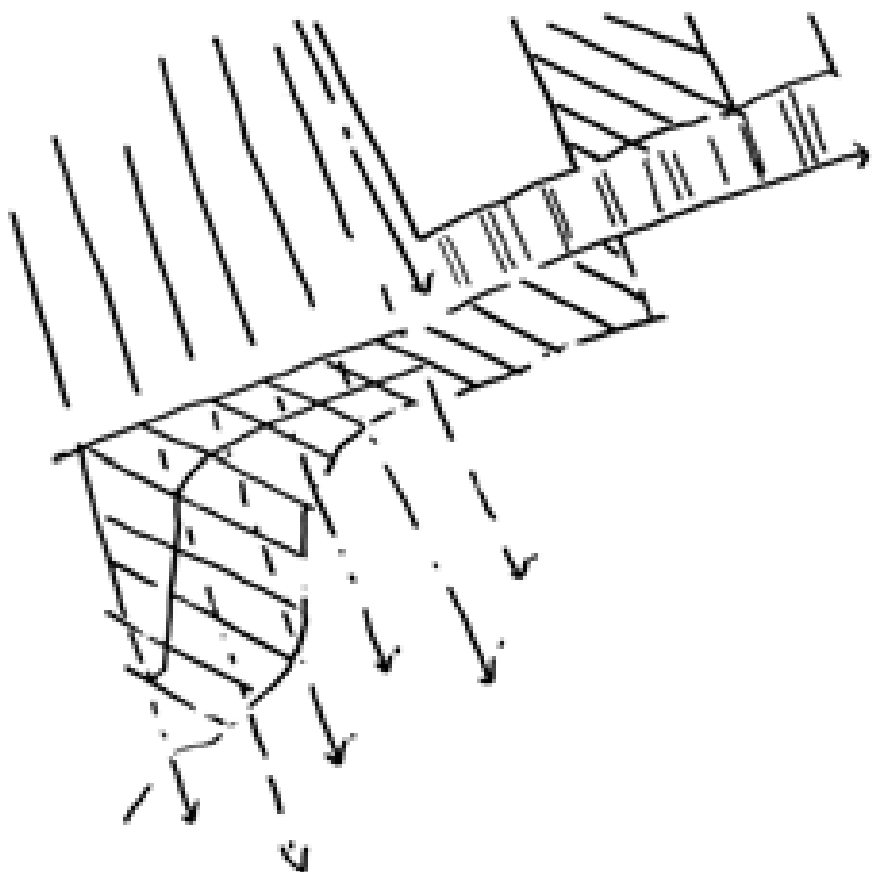


Directions of the Urban Fabric towards the Tirana Park

The best way to connect Lake Park with the city is through an intermediate space that spans from MT square to Sami Frasheri Street. We conceive to extend the park to the city. The image of the Entrance to the Tirana Park is MTS itself in being perceived now as the starting point of a series of larger and smaller public spaces that connect city and park.

We propose to develop MT Square from an end station to a vivid connector with the rich adjacent city programs in all 4 cardinal points and, especially, with the Tirana Park Membrane. A powerful starting point of the permeable band of structures that blends the city with the lake park like a membrane open in both directions.

The new MT Square transforms into a culminating public space that connects with a series of new public spaces to the west. Starting with the new Frederic Chopin Square and further with a series of public spaced between and within the public services centre and the general directorate of the state police along the membrane.



The city blends with nature creating the “Tirana Park Membrane”

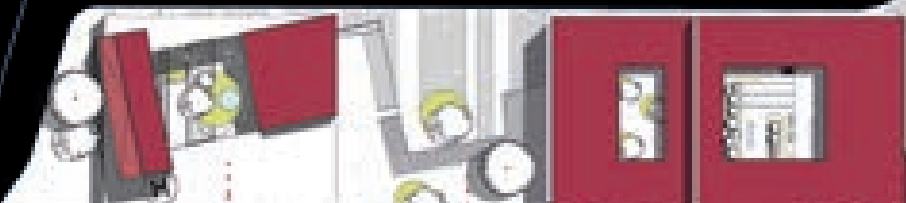
The Tirana Park Membrane – a system of public spaces partnering with the city and the park like brother and sister. Reinforcing the new role of MTS as the starting point of this urban/landscape hybrid is the future image of the entrance to the Tirana park

The former border between city and park is reconceived to become an 800m long active and vivid membrane. Extending the park in a wider sense towards the city and MT square. An urban transformation by means of a new hybrid urban layout that mediates between urban and nature.

Direct access and connection with the Lake park is created in various functional and visual ways extending existing axis and perspectives from the centre of the city to the park and vice versa, creating and manifesting strong links. Starting with the main Boulevard of Tirana “Martyrs of the Nation” through “Mother Teresa” Square and the Polytechnic University of Tirana, moving towards the West Entrance of the Lake Park near the dam of the Artificial Lake.



<b>CONCEPT</b> 	<b>RELATIONSHIP BETWEEN CITY AND PARK</b> 	<b>THE PARK EXTENDS TO THE CITY</b> 	<b>EXTENDING LAKE PARK</b> <p>The Lake Park project is a multi-phased development that aims to create a vibrant, sustainable community. The project is divided into three main phases: Phase 1, Phase 2, and Phase 3. Phase 1 focuses on the initial development of the park and the surrounding urban infrastructure. Phase 2 involves the expansion of the park and the integration of new residential and commercial buildings. Phase 3 is the final stage of the project, which includes the completion of the park and the surrounding urban infrastructure.</p>
<b>LINKS TO THE PARK</b> 	<b>RE-PLANNING PUBLIC SPACE</b> 	<b>PUBLIC SPACE OCCUPANCY</b> 	<b>FUNCTIONAL PROPOSALS</b> 





**EXTENDING LAKE PARK**

Architect: *OMA*  
Technical Drawing - Scale: 1:500

## **Public Space**

Adding a new perspective for the people of Tirana of conceiving their city our project proposes to create a new type of urban development in Tirana's south blending urbanism and landscape along the band from MT Square to the west. This way the new Lake Park Entrance is not only an entry but rather a succession of connections that create a strong link between city and park. Now the nature of Lake Park does not only limit the urban development to the south but becomes an accessible major green part of the city that will be seen, experienced and enjoyed by the people as a green balance in all seasons year round.

## **Water in the city and urban furniture**

To live up to this expectation we created the Tirana Park Lake Membrane urban furniture which will also feature recreational water features, fountains, small flows etc.

CREATING AN ACTIVE BAND – THE TIRANA PARK MEMBRANE IN ORDER TO LINK THE URBAN FABRIC WITH THE LAKE PARK BY MEANS OF A SERIES OF PUBLIC SPACES.

## **Infrastructure and traffic**

It is necessary to re-think the traffic circulation for cars, bikes, public transportation and pedestrians in the complete system along the Lake Park Border taking in consideration a series of strong actions in the area.

Firstly, by making "Mother Teresa" Square only accessible by pedestrian's day and night, as a space not only for the students of the Polytechnic University and University of Arts but to re-conceptualize it as an "events square" that will reposition itself in the same monumental front façade but in a more human space by creating a series of micro spaces.

This mediator space can work in different levels and facilitate either permanent or temporary structures to be used for leisure and recreation, urban sports, can serve as spaces for open exhibitions and performances for the artists, and art students. The need of such spaces is immediate for Tirana in order to provide a platform for open and public activities.

While fully connecting "Abdyl Frasher" Street with "Asim Zeneli" Street passing through the Palace of Congress of Tirana finally completing the Ring of Tirana's City Centre in order to deviate the traffic movement preventing it to enter through "Mother Teresa" Square but still keeping active the movement of the car traffic through "Lek Dukagjini" Street. On the other hand,



connecting the “Fryderyk Chopin” Square with Dora D’Istria Street through the old border of the Governmental Guard will also create a parallel “Ringroad” connection along the Lake Park giving another important corridor of movement for the dense traffic of the city.

This new system of public spaces re-dimension “Mother Teresa” Square offering adjacent public spaces and offering a series of spaces to fulfil functional needs of the city, that are either linked to the University Campus, the Lake Park, or relate directly to everyday use of the space by the surrounding neighborhoods.

## **Campus Facility Extension**

Considering the placement of the new Campus Facility for the Polytechnic University between Mother Teresa and “Fryderyk Chopin” Squares working as the gate for the Lake park linking together with the directions of the urban fabric – then we develop an open architecture that aims to create a strong relationship with the frontal façade towards the new road but also invite citizens in order to use the space between the buildings letting the axes penetrate the landscape reaching finally in the park.

## **Public Services Centre**

The need for a Public Services Hall in the city of Tirana is a very important point in the city’s agenda of functional and efficient spaces that could maximize productivity and reduce bureaucracy in the public administration. In the era of information technology, architecture is necessary to generate new and modern spaces not only in terms of aesthetics and materiality but spaces that could fulfil functional needs and go further offering innovative approaches to services that are offered and maximizing the productivity not only for the common citizens but for the public administration employees.

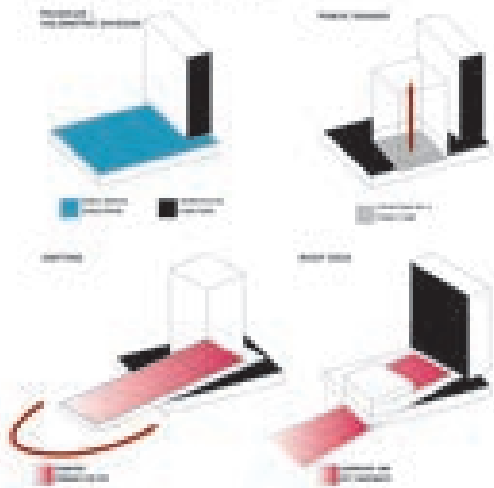
Its formal articulation in the space positions the Public Services Hall between the Hub for Knowledge and Innovation and the Police Headquarters Facility orienting the building by the axis of the city that penetrate the natural structure of the Lake Park. The axes that cut through the urban pattern are left open either to create an open visual communication with the Park or they are used as entry points for the Public Services Hall.

Architecturally the building offers outdoor urban spaces starting from the entry part and its connection points to the part, continuing with indoor urban spaces in the two atriums that are created providing spaces for the visitors of the Public Services Hall or its employers and finally with the direct areas that belong to the administration.

The building itself is divided in three equal parts of a total 14,800 m<sup>2</sup> with functions that are



SCHEMATIC DESIGN CONCEPT



PROGRAMMATIC NEEDS



FIRST FLOOR 1:200



SCHEMATIC DESIGN CONCEPT

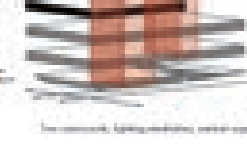
The main circulation, the way program is laid out and the entrance to the lake park.

Stacking three levels

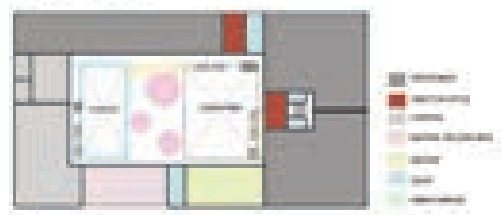
The first volume, the way floor program through building to the north

Stacking two and extending south to the lake

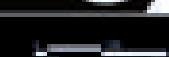
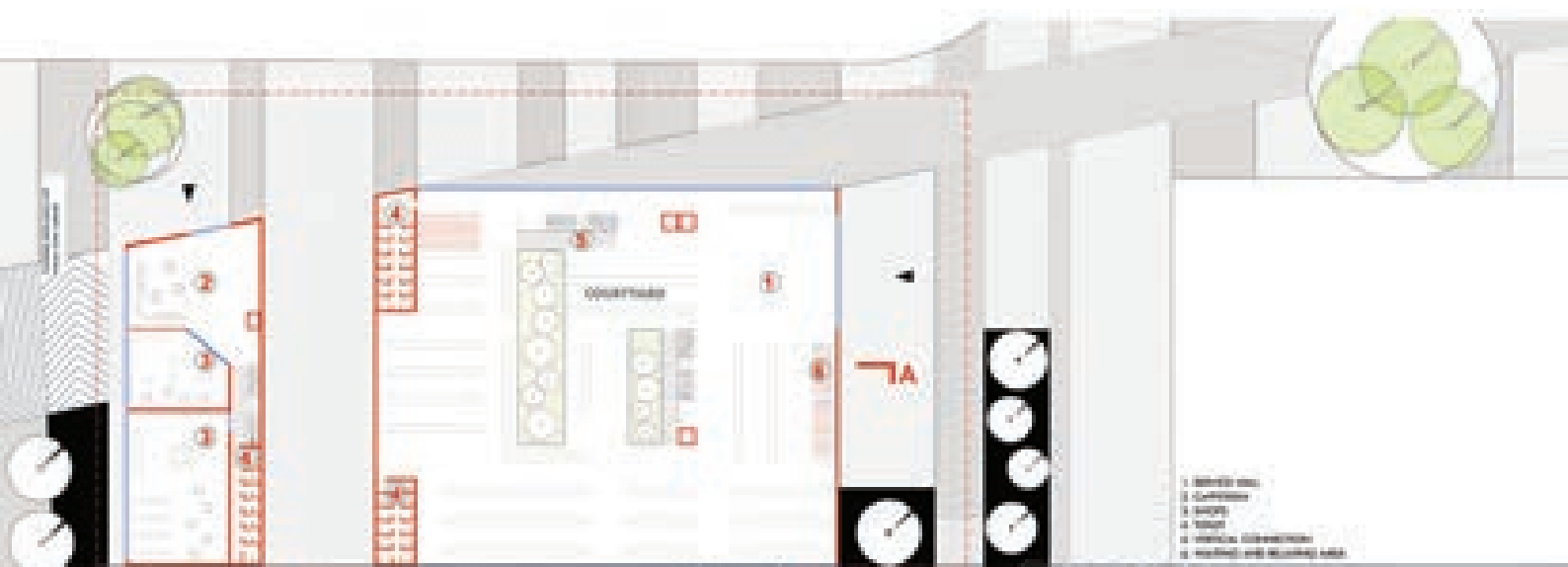
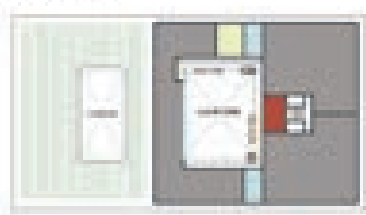
The first volume and a bridge across water

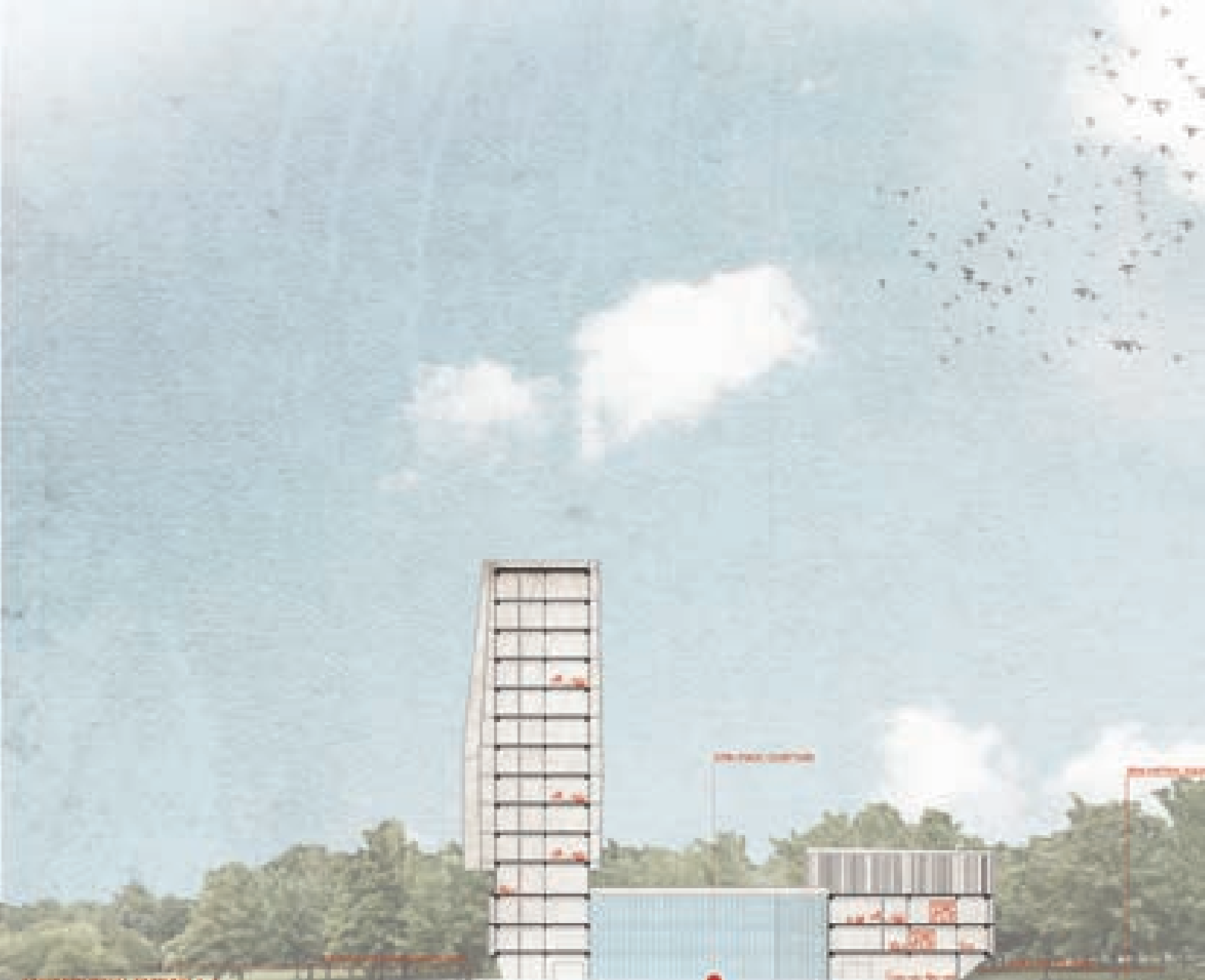


DISTRIBUTIONAL PLANS 1:500  
SECOND FLOOR



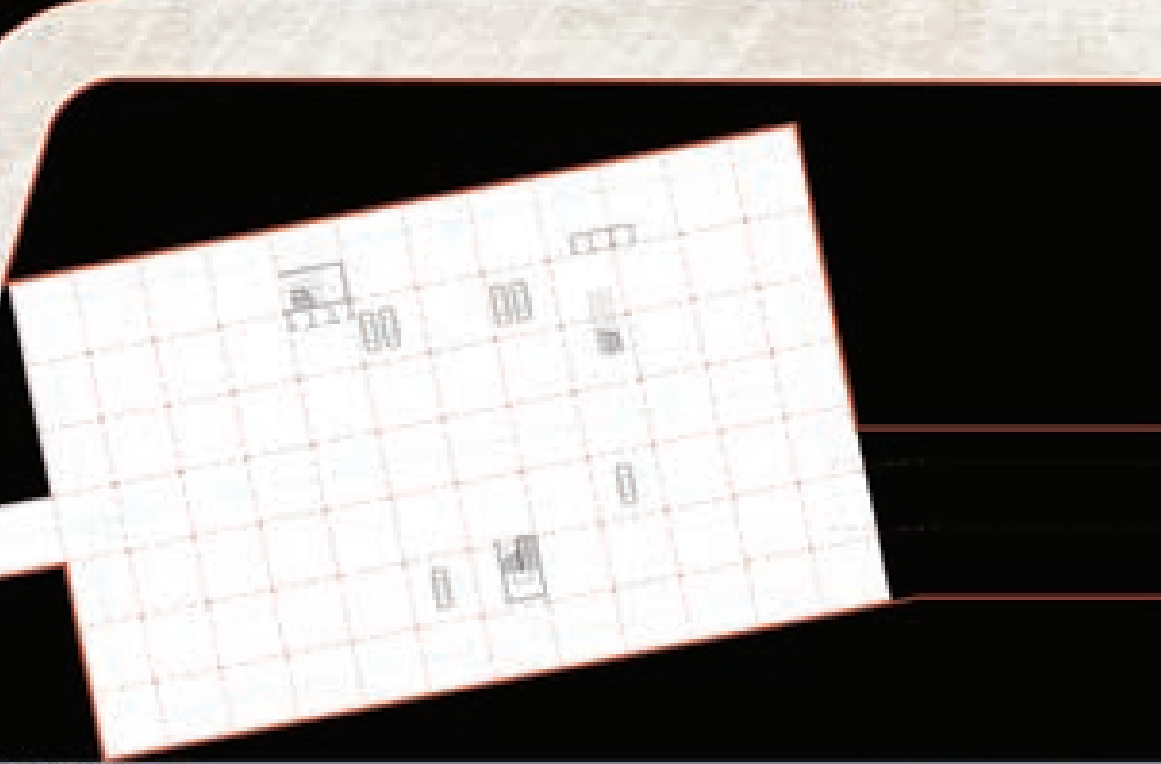
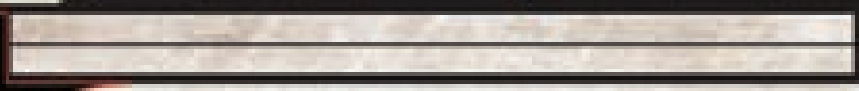
DISTRIBUTIONAL PLANS 1:500  
THIRD FLOOR





CONCEPTUAL SECTION 4-4

PARK



**EXTENDING LAKE PARK**

Building City with Nature  
CONCEPTUAL SECTION / SCALE 1:500

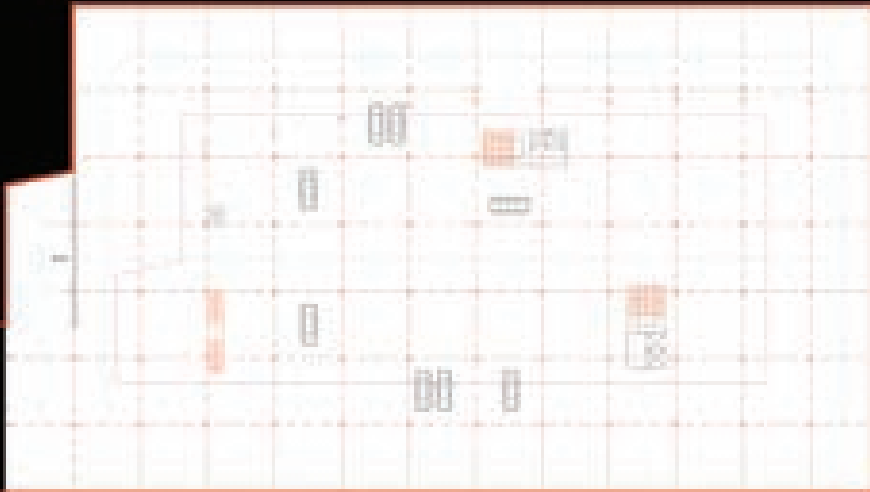
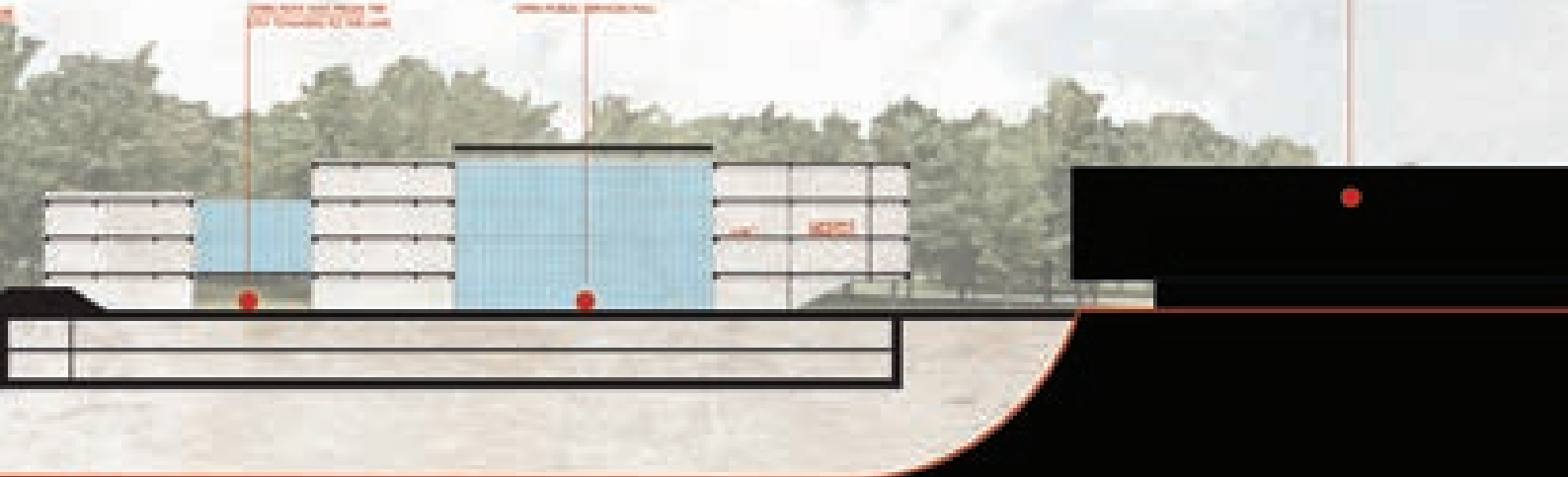


THE MEMBRANE

MEMBRANE WALLS AND  
COLUMN SPACING

MEMBRANE WALLS AND  
COLUMN SPACING

MEMBRANE WALLS AND  
COLUMN SPACING



totally oriented to the public and the visitors from the city, either to penetrate and access the Lake Park from it or to use the functions that are hosted inside it. While in the same logic a more functional and services oriented distribution is done in order to facilitate the spaces necessary strictly for the Public Services Hall and all the adjacent spaces that are dedicated to the administration of the building covering the last part of the whole structure.

Finally, 200 parking spaces that are integrated in the underground part of the Public Services Hall can be used in two different ways during day and night. During day the administration and the visitors of the Hall can use them while during night the citizens that live nearby can use the parking relieving in this way many public spaces but also solving a big issue through the lack of parking spaces in the city.

## **General Directorate of the State Police**

The General Directorate of the State Police of Albania follows similar principles in the way it is integrated in this series of public spaces and public services buildings. It develops itself by respecting the axes that through the urban fabric end up to the park being placed in the limits of its “border”.

In this case the building creates in front of it a new public square for the city making it the last public square generated in front of the new developments on the “border” of the Lake Park taking in consideration the angular movement of “Dora Istria” Street while being parallel on the first floor and shifting direction on the last floor.

Two units that are connected with an inner courtyard maximizing again the number of public spaces providing indoor and outdoor squares divide the structure. This inner courtyard also makes the difference between the two different typologies of units that formulate the Police Headquarters, the part which is addressed to provide functions more related to the public, such as the Information Unit Centre and the Support Centre to the Citizen which are developed in four (4) floors on a total of 9,000 m<sup>2</sup>.

Connected forming a complete unit dedicated to the Police Headquarters stands the iconic tower which facilitates a series of functions dedicated fully to the Albanian State Police with over 6,000 m<sup>2</sup> spread in 15 floors of administrative spaces with offices and technical areas but also a series of specialized departments such as the Department of Crime Investigations, the Department of Immigration, the Technology and Information Centre, the Department of Forensic Police and a number of highly equipped Laboratories of criminology.

As part of the new Complex that re-defines the border of the Park the architecture that comprises the Police Headquarters follows the principles of sustainable design maintaining in the same time both the balance that is required to relate on the character of “Mother Teresa” Square and also to create a new reference point that could mark the Lake Park Entrance visible from other parts of the city.

## Landscape

The Park can be accessed through a series of public spaces/ square that each one of them creates/ maintains a different character in either typology or function.

The Open Air natural auditorium as part of the “Mother Teresa’s” configuration gathers people into a new focal point for the city but also giving the opportunity to re-organize the space with different thematic activating the forgotten corners of the square while providing shading with a series of Pine and Oak trees that follow the existing skyline of the “Martyrs of Nation” Boulevard. This arrangement re-activates the corners of the square but also leave open the two monumental axes (1. Directed to the Polytechnic University building towards the main Boulevard of the city and 2. Connecting the Mother Teresa Square towards the “Qemal Stafa” Stadium. The Rectorate and Institute for Albanological Studies with the University of Arts).

In the point where these two historical axes connect a water mirror is generated by a small inclination given the square in order to serve as a strong element in the re-dimensioned square, reflecting the monumental image of the new square and the emblematic building of the Polytechnic University. This space will operate and transform itself with the pumping water giving intensity and rhythm, provoking all ages to interact with it. This water mirror will operate under certain flexibility in order to adapt if we will have big gatherings in the square or festive activities where it can be emptied and then all the inclination can be taken advantage of.

## Connection and Sustainability

The main principles on which this project is based three sustainable and synergetic elements. The Tirana Park Membrane

This could be realized if we re-conceptualize the whole concept of how public spaces are organized by creating a series of public spaces that function either outdoor but also indoor integrated inside the new buildings. Creating this new structure of “public rooms” in order to re-approach the Lake Park will provide a better dimension in the public space taking maximum advantage of it by extending also in their functionality.

Finally in order to preserve the skyline and the picturesque situation on which the Lake Park is placed after the implementation of the new buildings and functions we use the minimum required area plot with an architecture that is does not exceeds 4-5 floors in the buildings that will facilitate public functions respecting the actual skyline while rising more on height where functions that won't be publicly used will be placed, such as the Police Headquarters locating them more and more near the edge of the border outside the picturesque frame of the Lake Park Entrance.



VIEW TOWARDS "MOTHER TERESA SQUARE", COMING FROM THE BOULEVARD



PUBLIC SERVICES CENTER





VIEW TOWARDS "MOTHER TERESA" FROM THE UNIVERSITY FACILITIES



SQUARE CREATED IN BETWEEN PUBLIC SERVICES CENTER AND GENERAL DIRECTORATE OF STATE POLICE



F1 REFERENCE VIEW TOWARDS "FREDERIC CHOPIN" SQUARE



VIEW TOWARDS THE NORTH-WEST ENTRANCE OF THE LAKE PARK



VIEW TOWARDS THE COMMONS AREA

## COST ESTIMATION\*

### PUBLIC SERVICE MALL

1	Earth works	321.750,00 €
2	Foundations and basement	1.081.000,00 €
3	Exterior shell	1.471.500,00 €
4	Structural works (concrete construction)	1.523.700,00 €
5	Interior (walls, finishing, cladding, ceilings, etc)	1.997.500,00 €
6	HVAC works	1.283.100,00 €
7	Electricital works (BMS, Cabling, fire fighting, etc)	1.092.750,00 €
8	Green roofs	329.000,00 €
9	Photovoltaics	572.000,00 €
10	Landscaping	260.000,00 €
	<b>Total</b>	<b>9.932.300,00 €</b>

### POLICE OF STATE DIRECTORATE

1	Earth works	742.500,00 €
2	Foundations and basement	2.326.500,00 €
3	Exterior shell	1.050.000,00 €
4	Structural works (concrete construction)	1.838.250,00 €
5	Interior (walls, finishing, cladding, ceilings, etc)	3.372.500,00 €
6	HVAC works	2.020.750,00 €
7	Electricital works (BMS, Cabling, fire fighting, etc)	1.539.750,00 €
8	Green roofs	88.140,00 €
10	Landscaping	260.000,00 €
	<b>Total</b>	<b>13.238.390,00 €</b>

\* Cost calculations are done based on rough calculation of volume of the buildings proposed for the State Police Directorate and Public Service mall. Calculations done are based on interpolation of prices from previous project our company has done, adjusting the price to local market of Albania based on a very general research done.

Building shell is calculated with generosity taking in account the esthetical requests of the buildings.

