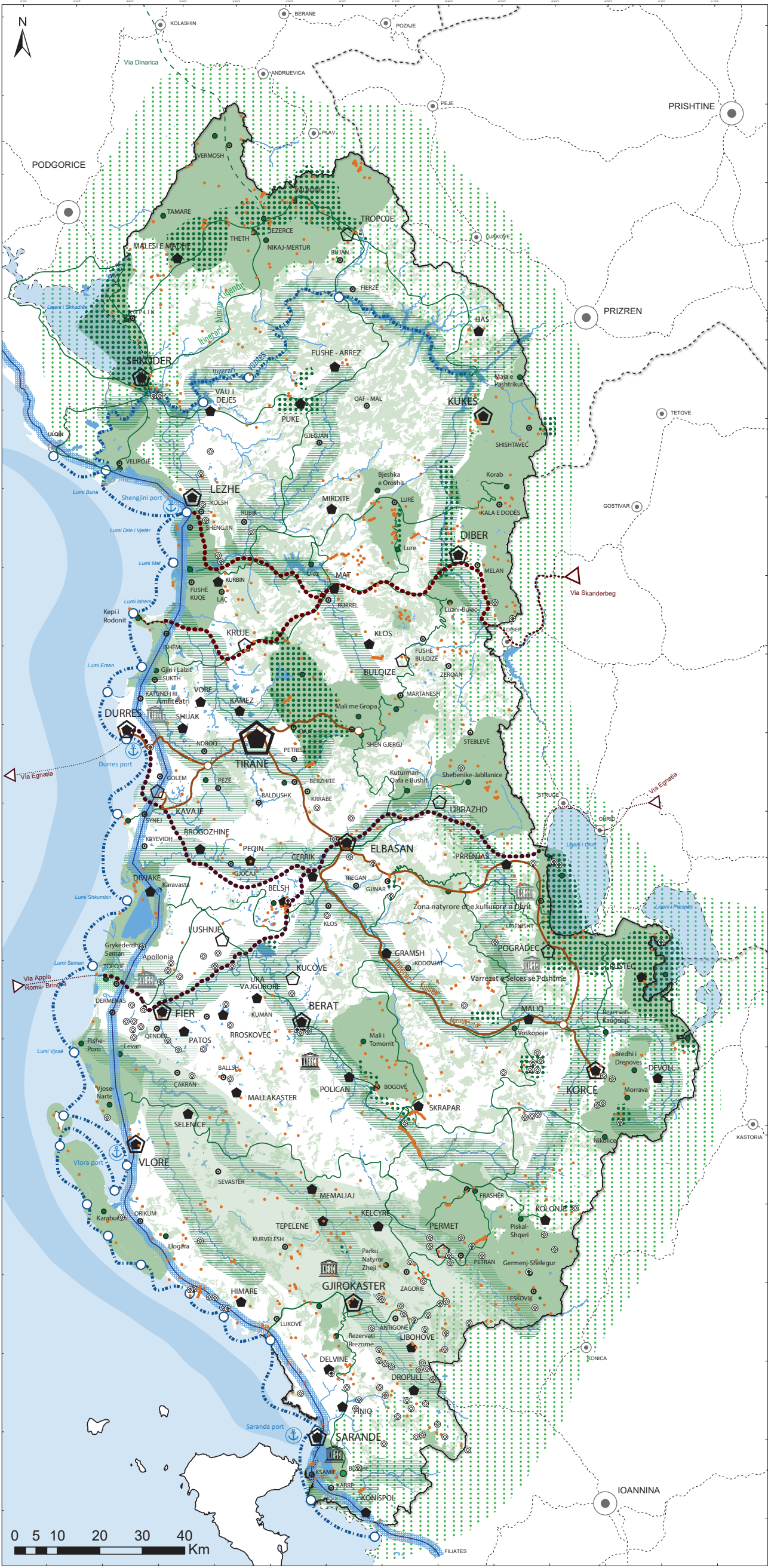


GENERAL NATIONAL PLAN_NATURAL SYSTEM



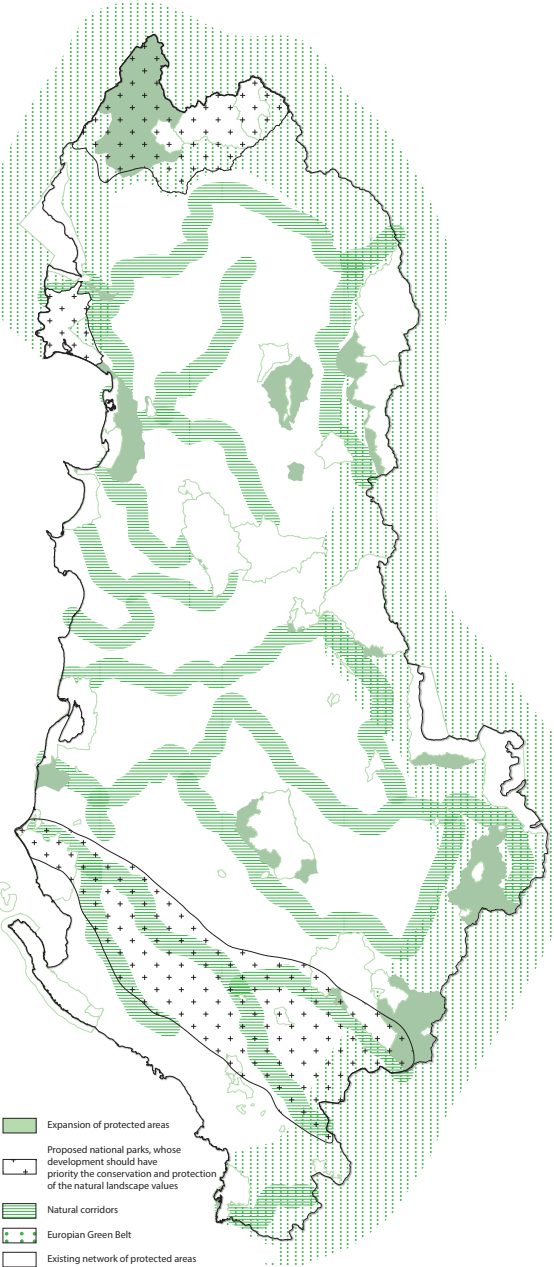
In the General National Plan the environment is considered as an asset preserved to serve the mankind and to the sustainable economic development. It is not considered as an area denied to human activity.

Proposals
For this system GNP is delivered through two approaches: PROMOTION and ACCESS.

- Under this framework the solutions proposed are as follows:
- a) Expanding those areas that have nature as a priority by defining the natural connecting corridors along the river valleys;
 - b) Defining three strategic areas as three national parks, the development of which should prioritize the preservation and protection of the natural landscape values:
 - The Park of Alps
 - The Park of Buna
 - The Park of Vjosa

Also, it is proposed to add the Emerald network to the protected areas network. Generally, it represents a network where ecosystems, habitat, species, landscapes and other natural features of pan-European relevance shall be preserved in line with the criteria and provisions of the law "On protected areas".

- c) Carrying out the "National bicycle network" project, which accesses and crosses through the natural areas and those of cultural and historical heritage;
- d) Reforestation and regeneration projects in the areas degraded from such phenomena as erosion and floods.



- LEGEND**
- Main port
 - Metropolis
 - Primary centre
 - Secondary centre
 - Tertiary centre
 - Specialized local centre
 - Natural monument
 - Protected areas network (existing and proposed)
 - Areas having tourism development as a priority (existing)
 - Proposed natural corridors
 - Forest land
 - Sailing route
 - Bicycle route
 - Touristic area/site
 - Existing UNESCO site
 - Proposed UNESCO site
 - Panoramic Coastal Road
 - European Green Belt
 - Cultural monument

Note: For the updated list of cultural monuments please refer to the official websites of the Ministry of Culture and the Institute of Cultural Monuments.

Source:
- Network of Protected Areas in Albania, NAPA
- Emerald Network Area, <http://geoportal.asig.gov.al/>
- Natural Monuments Network, <http://geoportal.asig.gov.al/>
- Proposed UNESCO sites, <http://whc.unesco.org/en/tentativelists/>
- Existing Unesco sites, <http://whc.unesco.org/en/statesparties/al>
- Corine Land Cover Data, NTPA