

STEPS of SARANDA

Design guidelines and development



OPENFABRIC

cityförster
architecture + urbanism

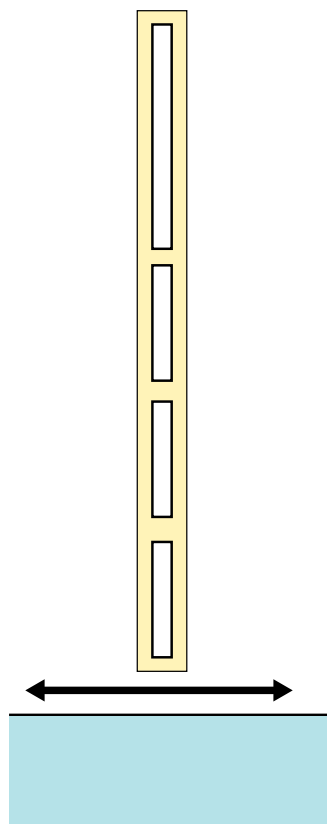
SymbioticA

03	1. CONTEXT	20	3.4 Drainage	42	4.4 Fragment B
		21	3.5 Vegetation	43	Demolitions B
04	1.1 Staircases in the past, the Austrian plan	21	Concept	44	Site Plan B
05	1.2 Staircases today	22	Planting list	45	Planting B
		23	Compositions	46	Drainage B
		26	3.6 Lighting	47	Elevations B
06	2. CONCEPT	27	3.7 Transitions		
				48	4.5 Fragment C
07	2.1 Spacial concept			49	Demolitions C
08	2.2 One staircase, five public spaces	28	4. DESIGN DEVELOPMENT	50	Site Plan C
				51	Planting C
		29	4.1 Overall	52	Drainage C
09	3. DESIGN GUIDELINES	30	4.2 Keys	53	Elevations C
		31	4.3 Fragment A		
10	3.1 Pavement	32	Demolitions A1	54	4.5 Fragment D
10	Existing situation	33	Site Plan A1	55	Demolitions D
11	Saranda mosaic	34	Planting A1	56	Site Plan D
12	Steps	35	Drainage A1	57	Planting D
13	3.2 Colors	36	Elevations A1	58	Drainage D
14	3.3 Furnitures	37	Demolitions A2	59	Elevations D
14	Stone planter	38	Site Plan A2		
16	Corten-steel planter	39	Planting A2	60	4.5 Fragment E
17	Stone sitting elements	40	Drainage A2	60	Site Plan E
18	Parking bollards	41	Elevations A2		
19	Litter bins			61	5.0 CREDITS

2. CONCEPT

2.1 Spatial concept

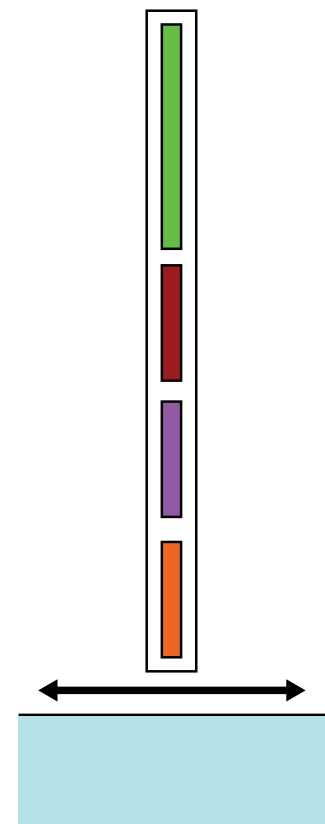
Continuity



It is of crucial importance to create a spatial and design language that can unify the different staircase stretches into one unique public space. That is pursued in 2 ways:

1. Definition repeating elements over the different stretches: planters, lighting and vegetation
2. Enchancement of the whole staircase as a pedestrian space with a special focus to the transition zones between staircases and car roads, where the pedestrian priority has to be regulated.

Diversity

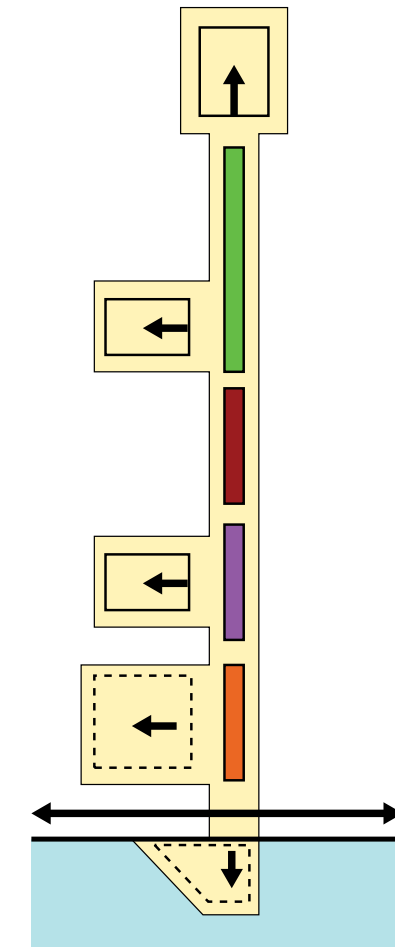


Given the definition of repetitive elements, within such continuity, diversity can be addressed between the different stretches. The definition of characters is given by the different site conditions and the varying context throughout the space.

Enhancing diversity also comes from the understanding of the city, which -often not in a positive way- combines a patchwork of different public spaces that do not merge onto each other.

By creating a common language, working on transitions and ensuring a certain design quality, diversity could become driver of a renewed urban identity.

System



The staircases have the potential to become a unifying element for different public space. In fact they are intended as a backbone of a broader system of spaces linked to each other.

Staircases can now directly connect with the waterfront promenade and pier, with the adjacent pocket spaces and with important built structure as the church, the kiosk, historical buildings and proposed hospitality facility.

2.1 One staircase, five public spaces

Wilde Stairs
fragment A



Panoramic Stairs
fragment B



Sitting Stairs
fragment C



Orchard Stairs
fragment D

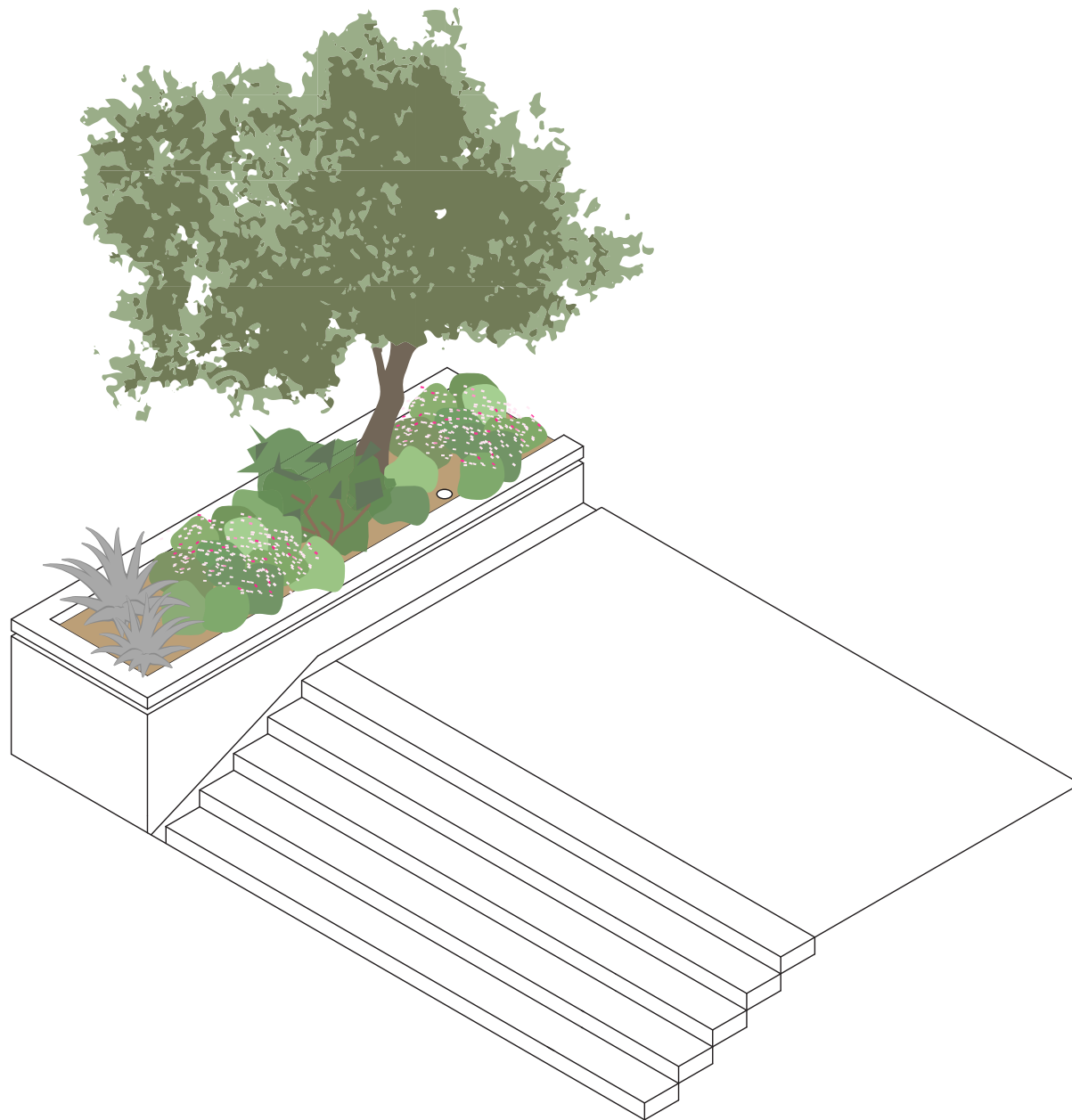


Pier Stairs
fragment E



3. DESIGN GUIDELINES

3.3 Furnitures / stone planter



The planter is a full round urban furniture; in fact while visually unifying the different stretches of staircase it provides several functions that are usually covered by several furnitures. The white stonewalls contain soil for rich Mediterranean vegetation compositions. In some areas, the planter gets larger and provide a comfortable wooden sitting elements; at the side of the wall, side lighting illuminate the staircases and uplighter the vegetation. The pipes of the run-off water coming from the roof is (partially) directed to the planter where it can be slowly absorbed by the soil.

A. The planter downhill side should be aligned with the lower step.

B. The height of the planter at the uphill landing should be 450mm in order to allow comfortable sitting.

C. Top: White 'Berat Stone', smooth finishing.
Dimensions: 200x100x690mm

D. Top large: under the wooden sitting element the top of the planter gets larger, the typical top stone (C.) is flanked by white 'Berat stone' 290x100x690mm.

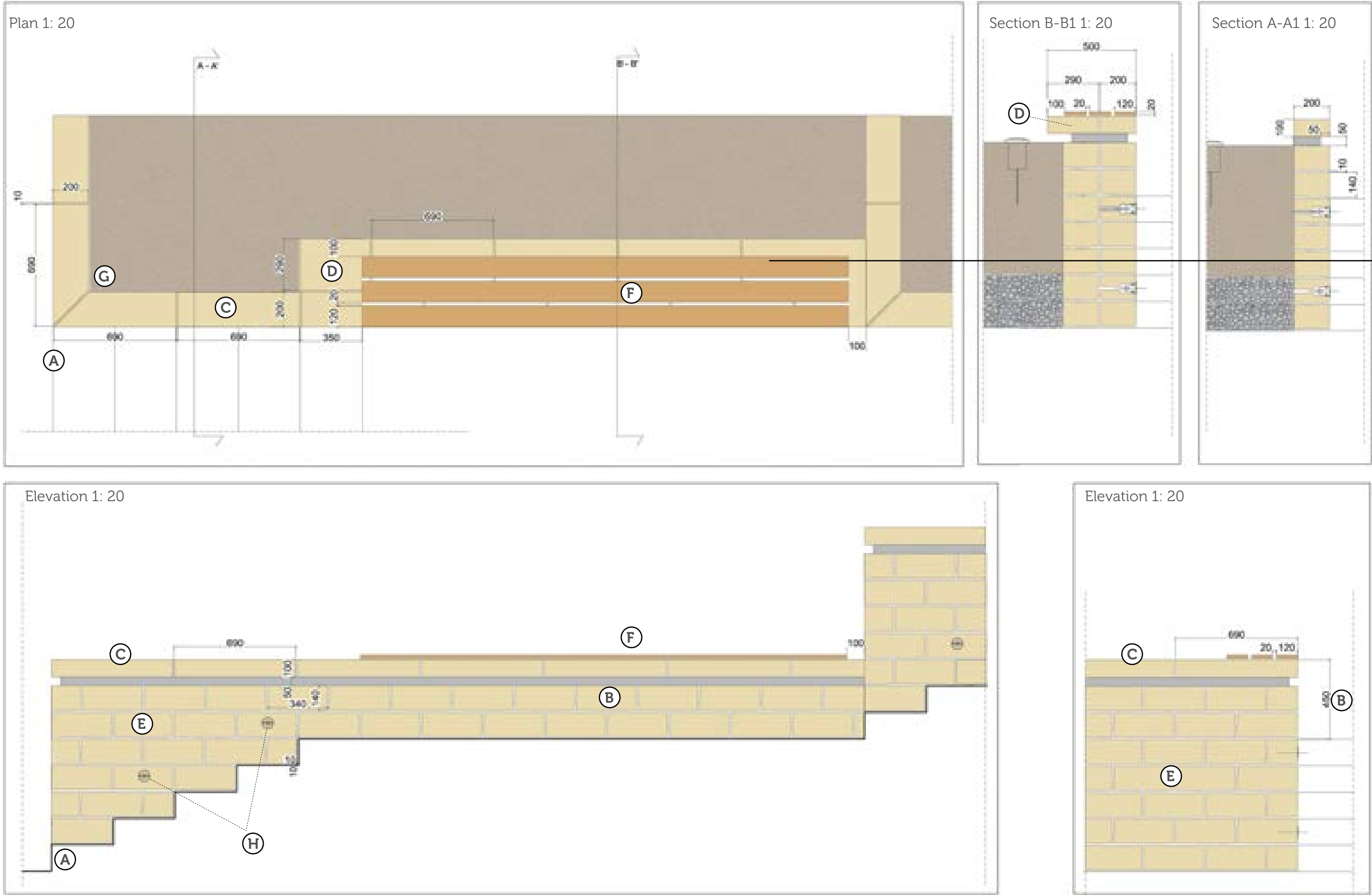
E. Walls: White 'Berat Stone', rough finishing.
Dimensions: 200x140x340mm

F. Sitting elements: 3 wooden planks screwed directly to the stone. 120x20mm each plank, distance between planks 20mm. Varying length depending on the dimension of the planter. All wooden planks should distance the stone base of: 350mm on the downhill side, 100mm on the uphill side, and 100mm on the planter side.

G. Corner stones cut diagonally (45° angle)

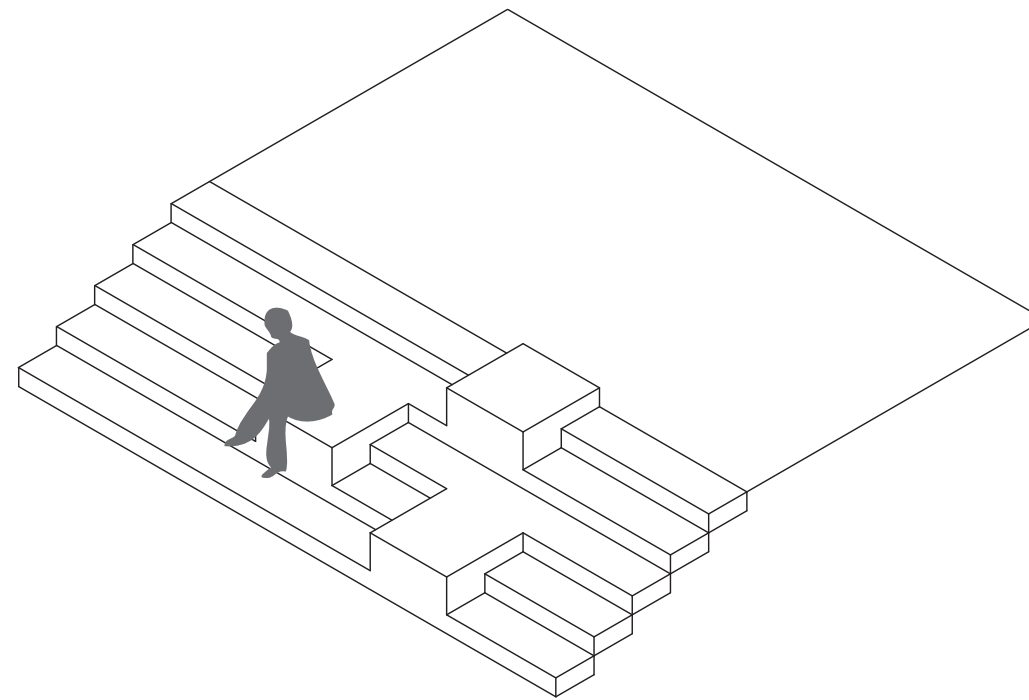
H. Recessed spot light located in central position of the stone. The first light should be located above the second step (counting from lower landing) and then alternately every

3.3 Furnitures / stone planter



3.3 Furnitures / stone sitting element

The "Stepping Staircase" is characterized by a number of stone-made sitting elements within the staircase itself. Extra stones create sculptural spaces reaching 45cm height that allow people to sit and not only walk-by the staircase.



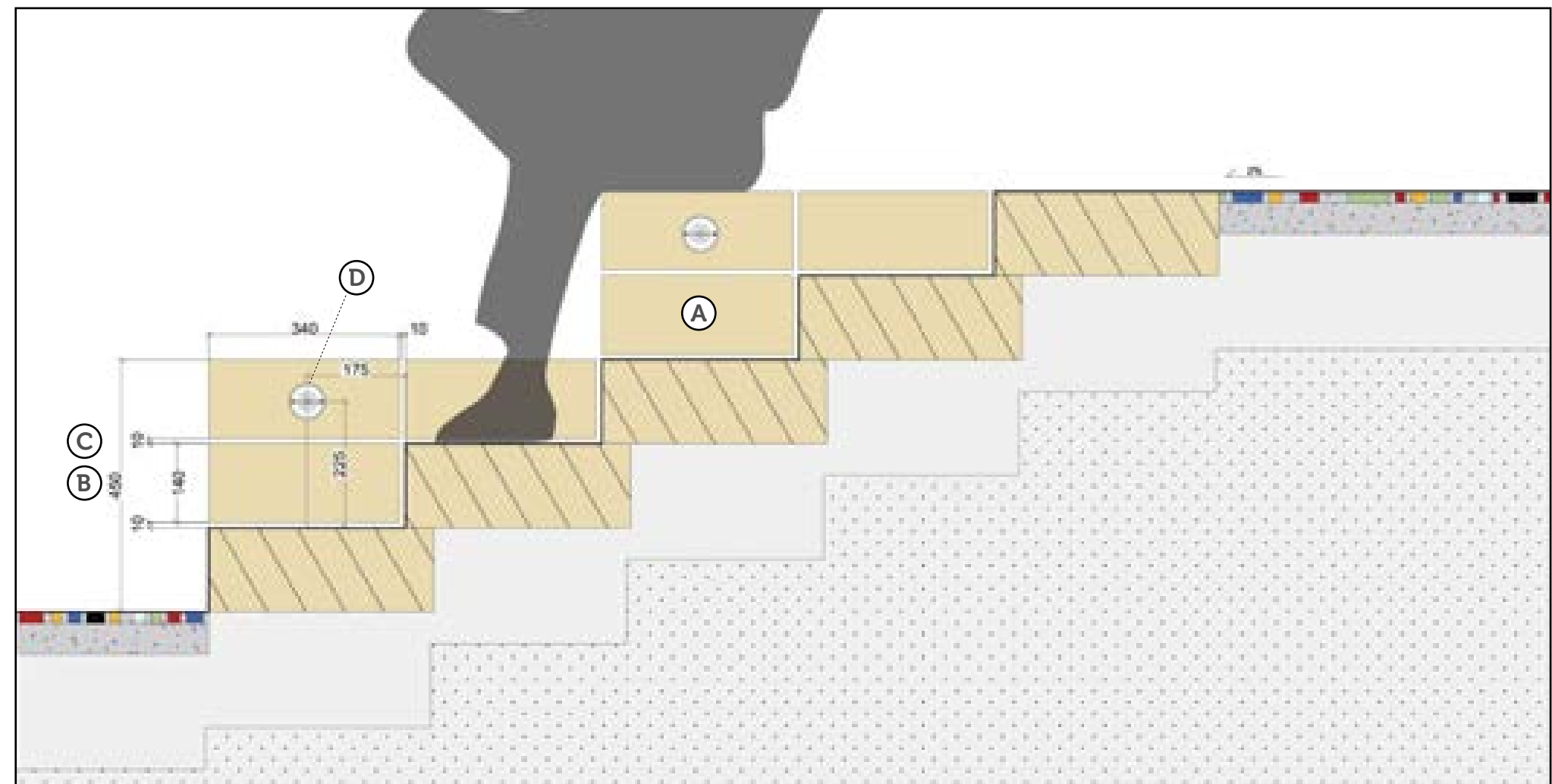
GUIDELINES:

A. White 'Berat Stone', smooth finishing. Dimension of step stones: 340x140x690mm

B. Sitting elements is 450mm from the feet position

C. Joints of 1mm in light colored concrete

D. Recessed spot light located in central position of the higher corner stone, 225mm height from the lower step.



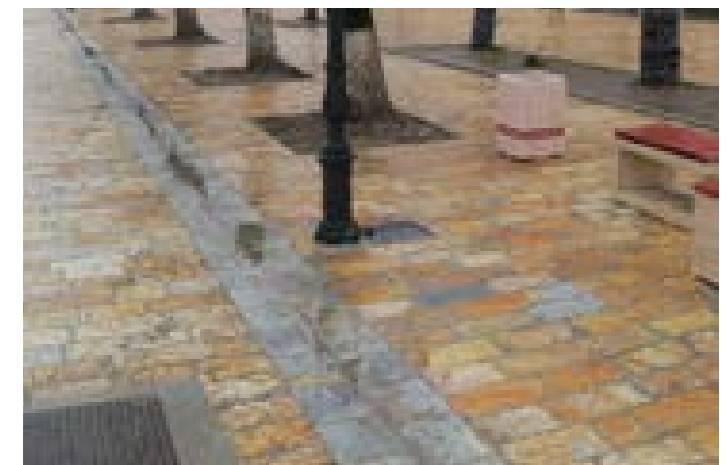
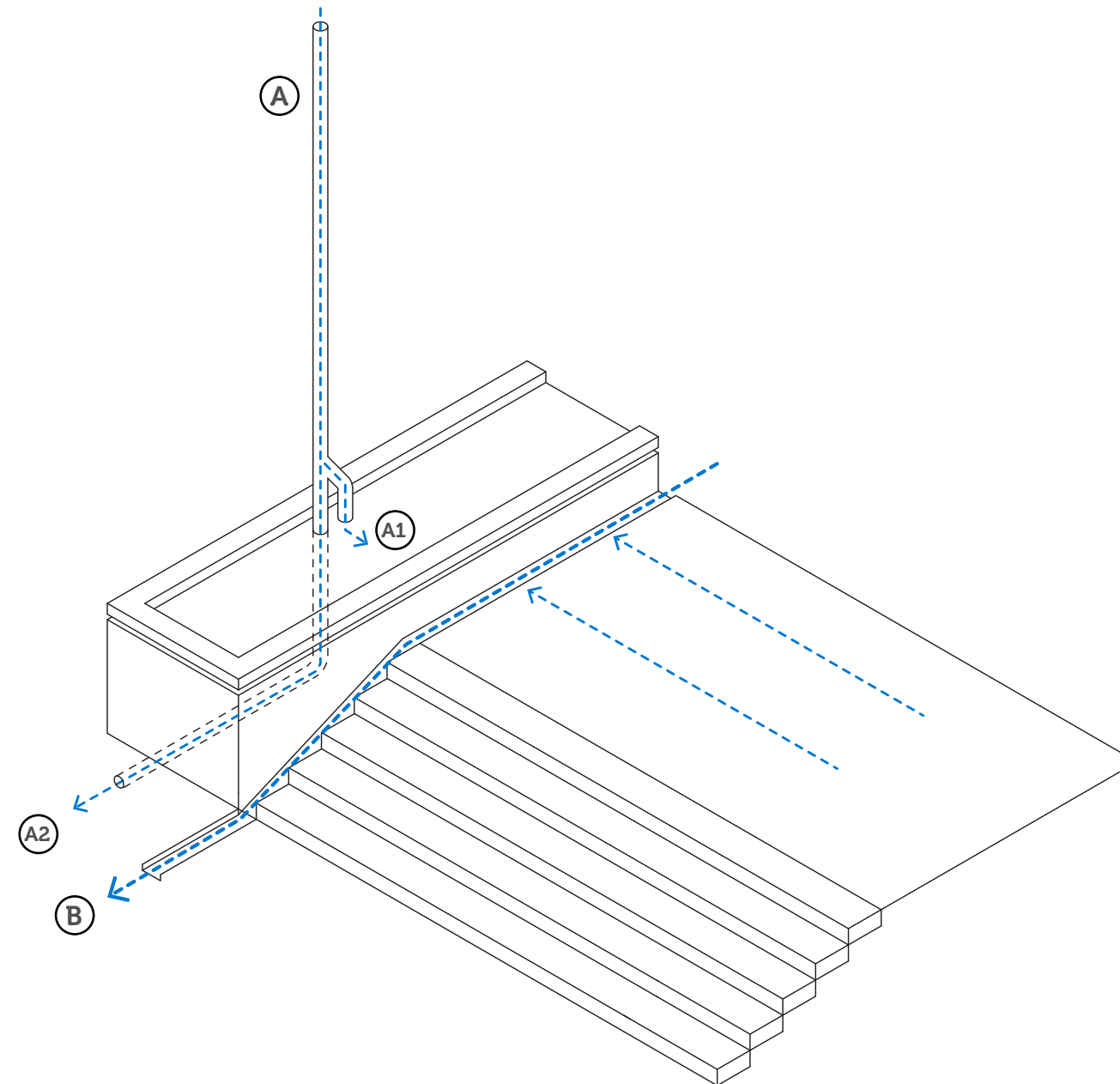
3.4 Drainage

A. The roof runoff water is collected and addressed through drainage pipes to (A1) planters for irrigation and to (A2) underground drainage pipe via a forked pipe.

B. The surface runoff water is collected and channeled through open gutters.

Runoff water is collected into tanks and reused on site for irrigation.

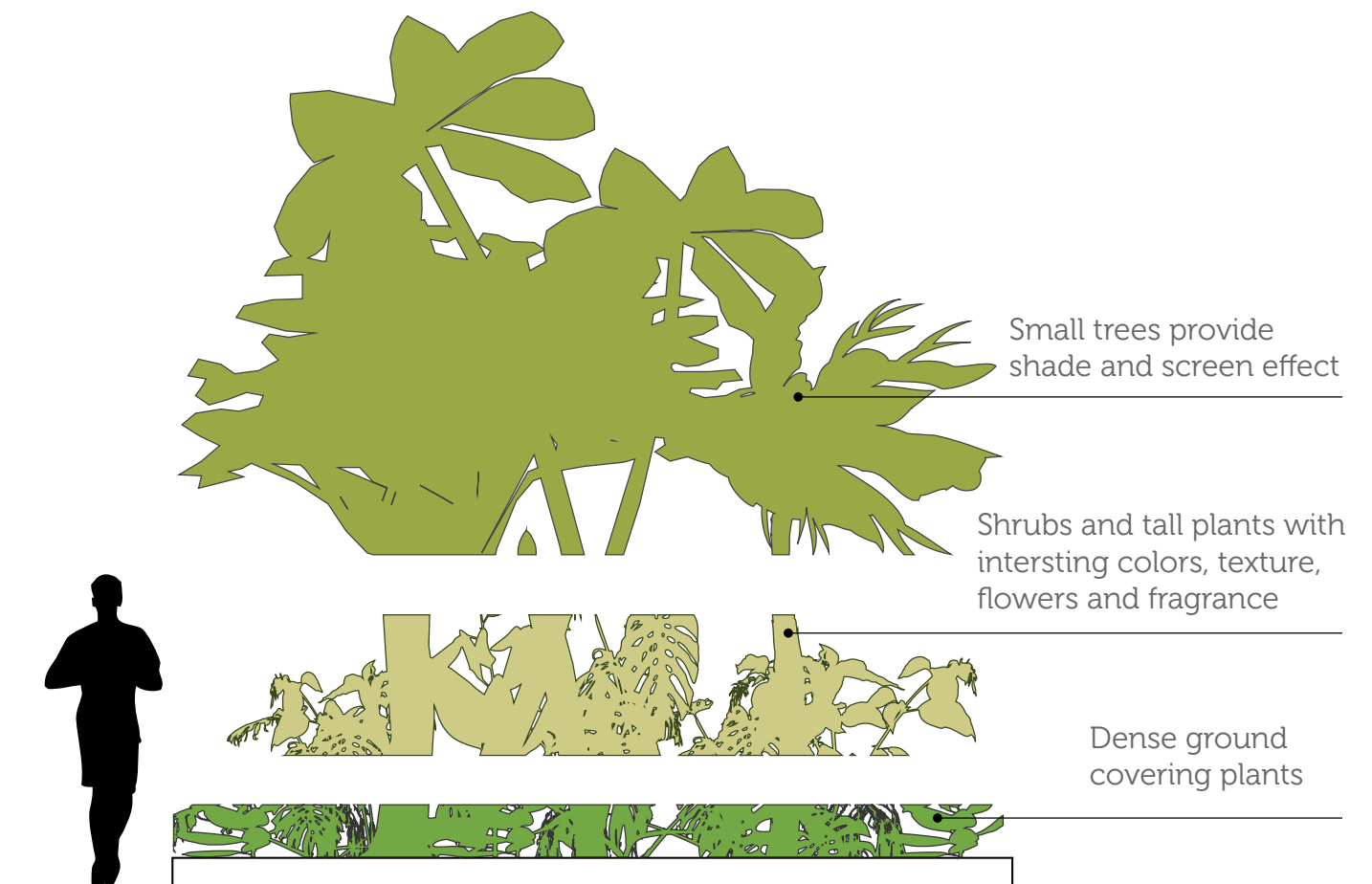
NOTE: Water tank position and functioning has to be verified and adjust on site.



3.5 Vegetation / concept



Vegetation is one of the linking elements of the staircase. The planters in fact are positioned at the side of it and will contain a dense plant layer. Mediterranean species create two continuous 'green lines' that provide shade and climate comfort to the users. Furthermore, the fragment A is characterized by planting scattered into the staircase itself creating a wilder identity. Fragment D is planted with mandarins and it refers to the outstanding orchards of the region.



3.5 Vegetation / compositions

COMPOSITION A:

Pt, Tf, Au
Group A



COMPOSITION B:

Pt, Ma
Group B



3.5 **Vegetation** / compositions



COMPOSITION C:

Pg, Ro
Groups C



COMPOSITION D

As, Ma
Group D



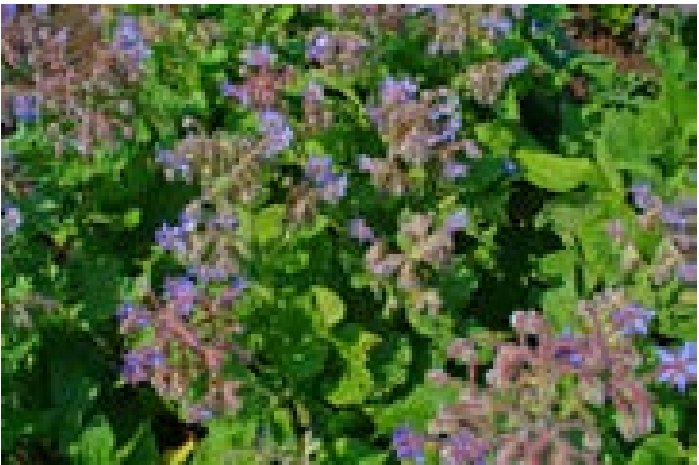
3.5 **Vegetation** / compositions



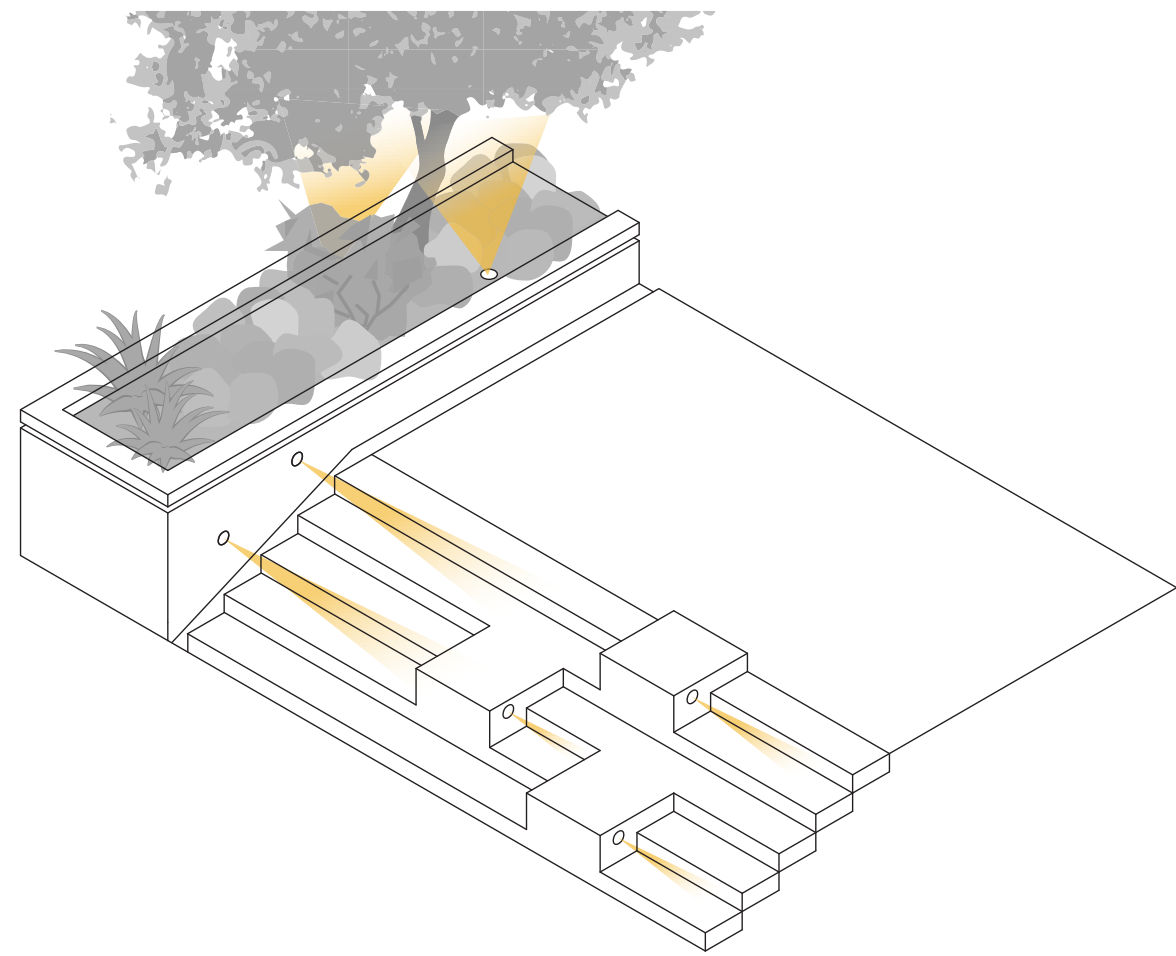
COMPOSITION E
Mc
Group E



COMPOSITION F
Pc, Ma
Group F



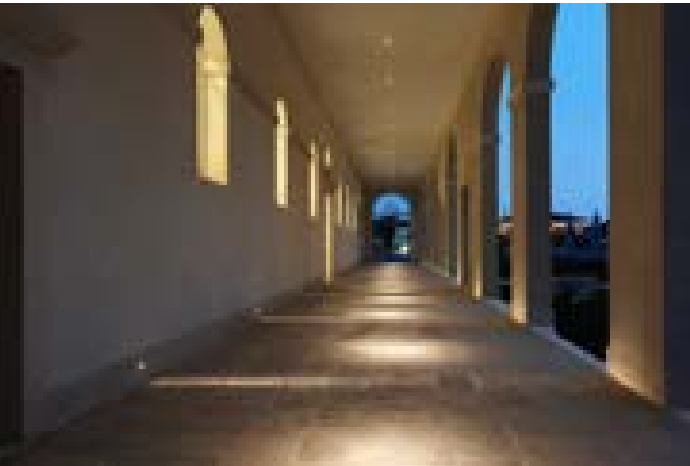
3.6 Lighting



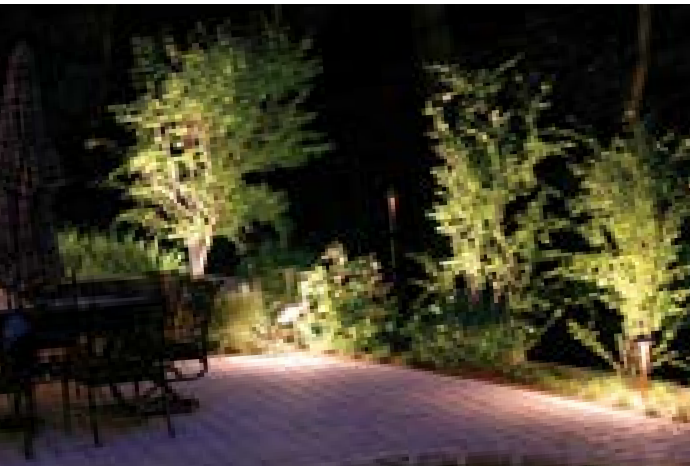
Detail 1: 10

The lighting concept is both functional and scenic, and lighting elements are thought as integrated to the proposed furnitures. Side spot-lights, recessed into the planters and sitting elements, dramatically enhance the presence of steps, creating light lines visible from the waterfront. The vegetation layer is lit from uplighters that generate green reflections and cast singular shadows on the adjacent facades.

A wall-recessed luminaire that is designed to use LED
Effect: high visual comfort and light line effect for the steps.

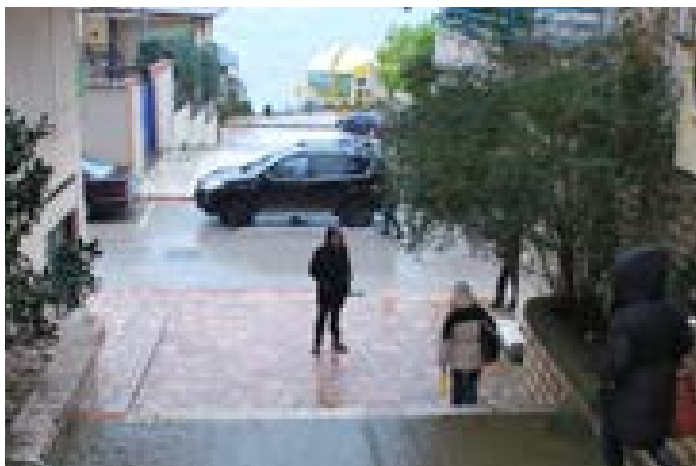


A ground recessed luminaires that emphasize greenery.
Designed to use LED lights.



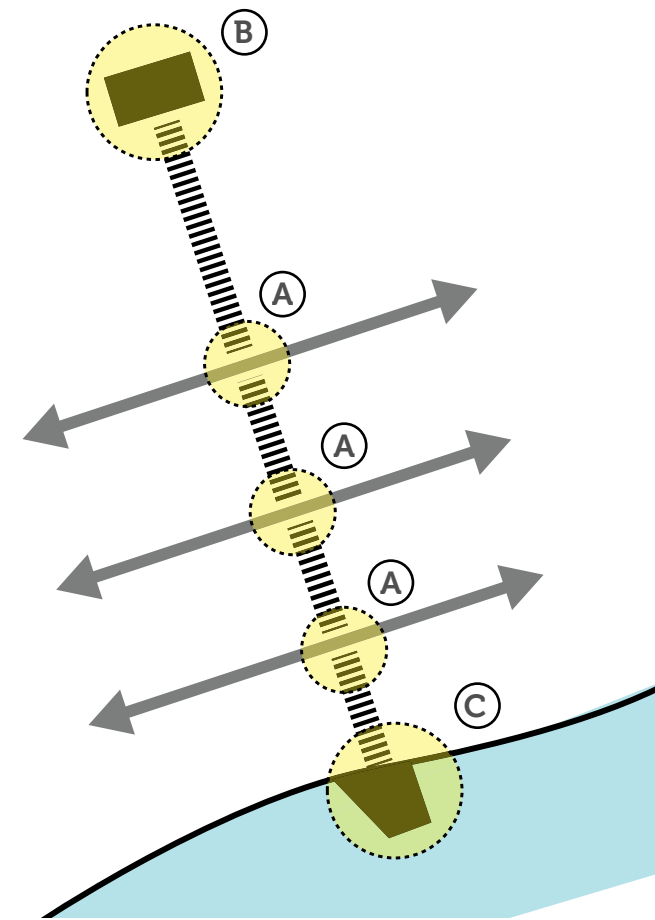
3.7 Transitions

The staircase is divided in 4 stretches by roads. Parked cars currently hinder the transition between the different parts and often, pedestrian crossing are not defined by zebras (see pictures below). In our approach, the transitions are fundamental to assure a continuous pedestrian experience of the users while walking along the staircase.



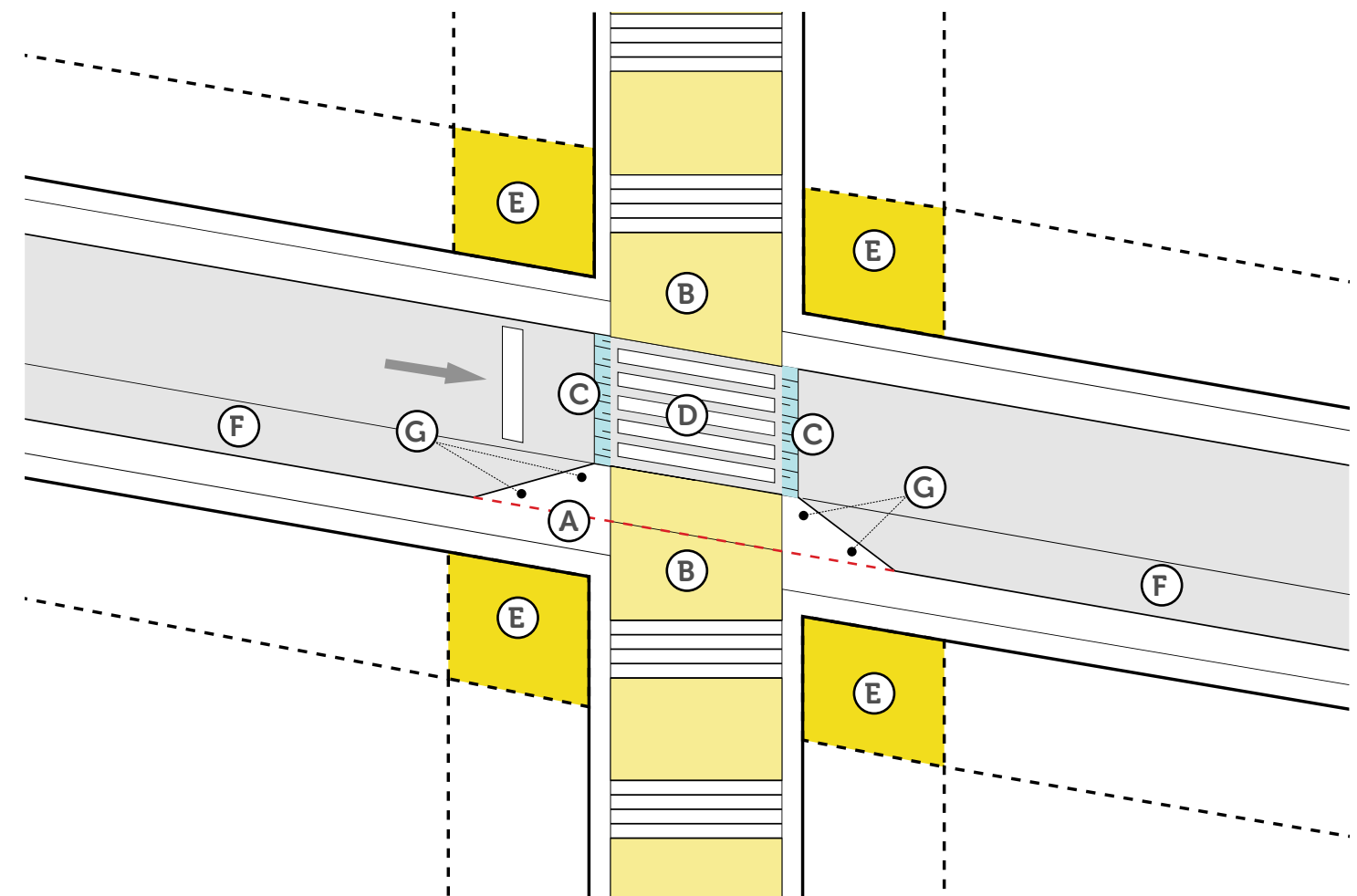
GUIDELINES overall:

- A. Typical transition (see guidelines below)
- B. Concession for hotel/b&b
- C. Pier extension (slow track)



GUIDELINES typical transition:

- A. Sidewalk extension in order to avoid unregulated parking
- B. Pavement (Saranda Mosaic) extension
- C. Road bump to slow traffic down and highlight pedestrian priority
- D. Pedestrian crossing with thermoplastic painted zebras at same height of the sidewalk
- E. Address active program at the corners (where possible)
- F. Parallel parking
- G. White stone parking bollards



4. DESIGN DEVELOPMENT

4.1 Overall

Fragment A1

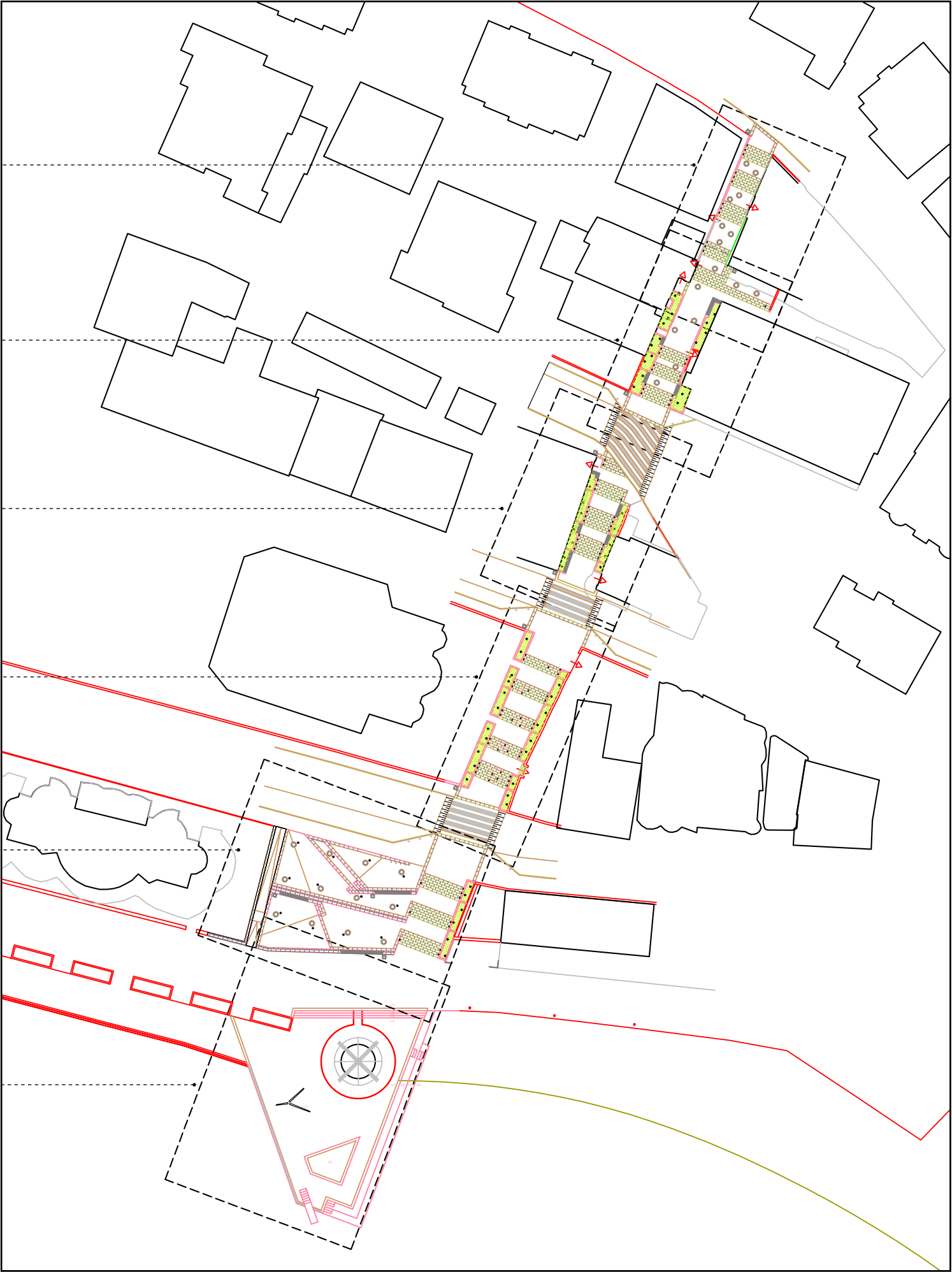
Fragment A2

Fragment B

Fragment C

Fragment D

Fragment E / [Slow track]



4.2 Keys

Key plans



Steel fence 1,5m



Draiage pipe



White stone parking bollard



Litter bins - 'Berat' white stone



Corten-steel surface planter, 80cm diameter, containing gravel



Wall-recessed LED spot light



Ground-recessed LED uplight



Corten-steel lamp poles sith multiple spot lights and various angles



'Berat stone' pavement dimensions: 70x45x15cm



Surface Demolition



Wall Demolition



'Berat stone' wall / planter



Wooden planks screwed to stone



Green surface



Gravel



Saranda mosaic



Underground concrete water tank for irrigation with manhole. Dimensions: 3,5x2x1m (dimensions are preliminary, to be detailed in construction phase) *dripping irrigation to be designed by the contractor



Open gutter in stone. To be detailed in consutruction phase



Drain



Surface runoff direction. Slope 2% to be verified on site with design supervisor



FINISHED FLOOR LEVEL



WALL LEVEL

Key Plantings

SINGLE SPECIES:

- As – Aloe succotrina
- Au – Arbutus unedo
- Ch - Chamaerops humilis
- Cr - Citrus reticulata
- Cs – Cystus scoparium
- Ma – Musa acuminate
- Mc – Myrtus communis
- Pc - Phormium cookianum
- Pt - Phormium tenax
- Pl – Pistacia lentiscus
- Pg – Punica granatum
- Ro - Rosmarinus officinalis
- Tf – Teucrium fruticans
- Yf – Yucca filamentosa

NOTE 1: All topographical measurements have to be verified on site and adjusted with disgner supervisor.

NOTE 2: Depending on the availability of the supplier, all plants are meant to be full grown. Musa acuminata, Yucca filamentosa and Chamaerops humilis should be multi-stem species.

PLANT GROUPS:

Group A:

- Stakys lanata
- Cineraria marittima
- Salvia officinalis

Group B:

- Nandina domestica
- Libertia grandiflora

Groups C:

- Lavandula angustifolia
- Thymus communis
- Santolina chamaecyparissus

Group D:

- Senecio talinoides
- Oscularia deltoides

Group E:

- Plumbago auriculata
- Pelargonium capitatum

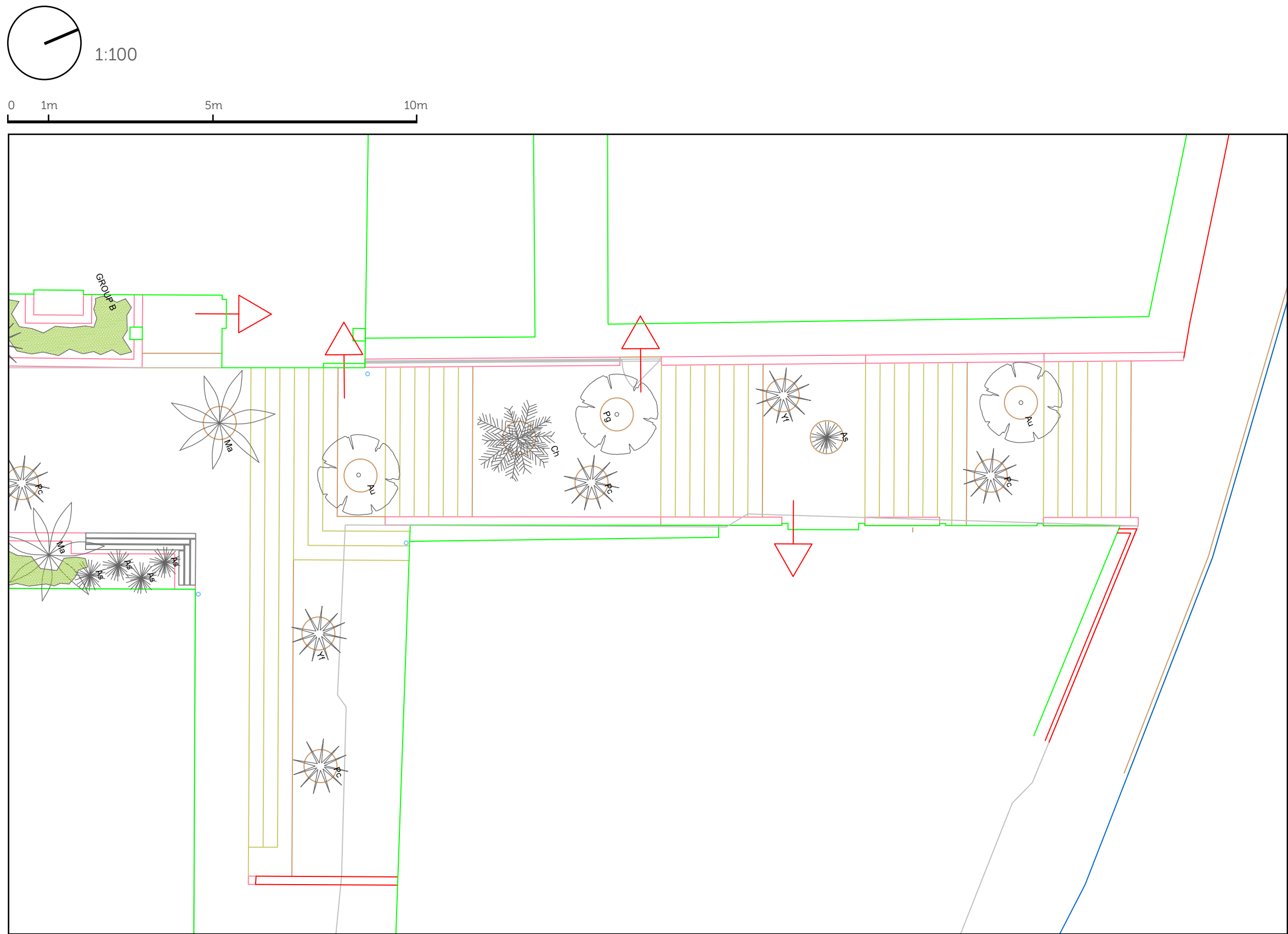
Group F:

- Borago officinalis
- Lantana camara

4.3 Fragment A



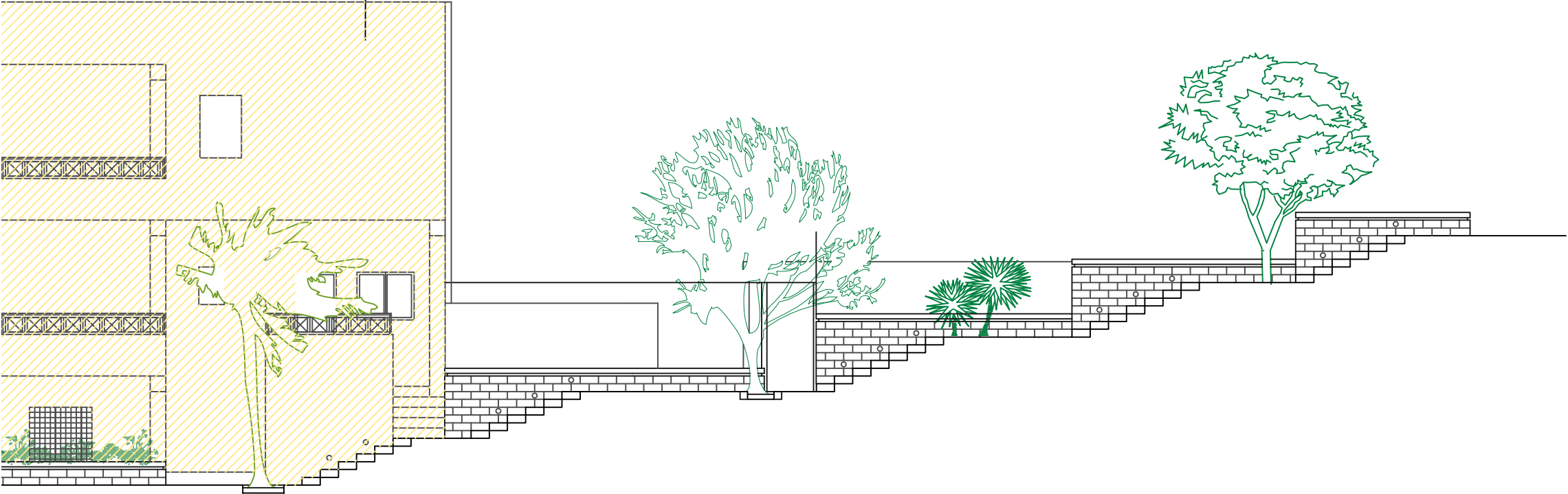
4.3 Fragment A1 / planting



4.3 Fragment A1 / elevations

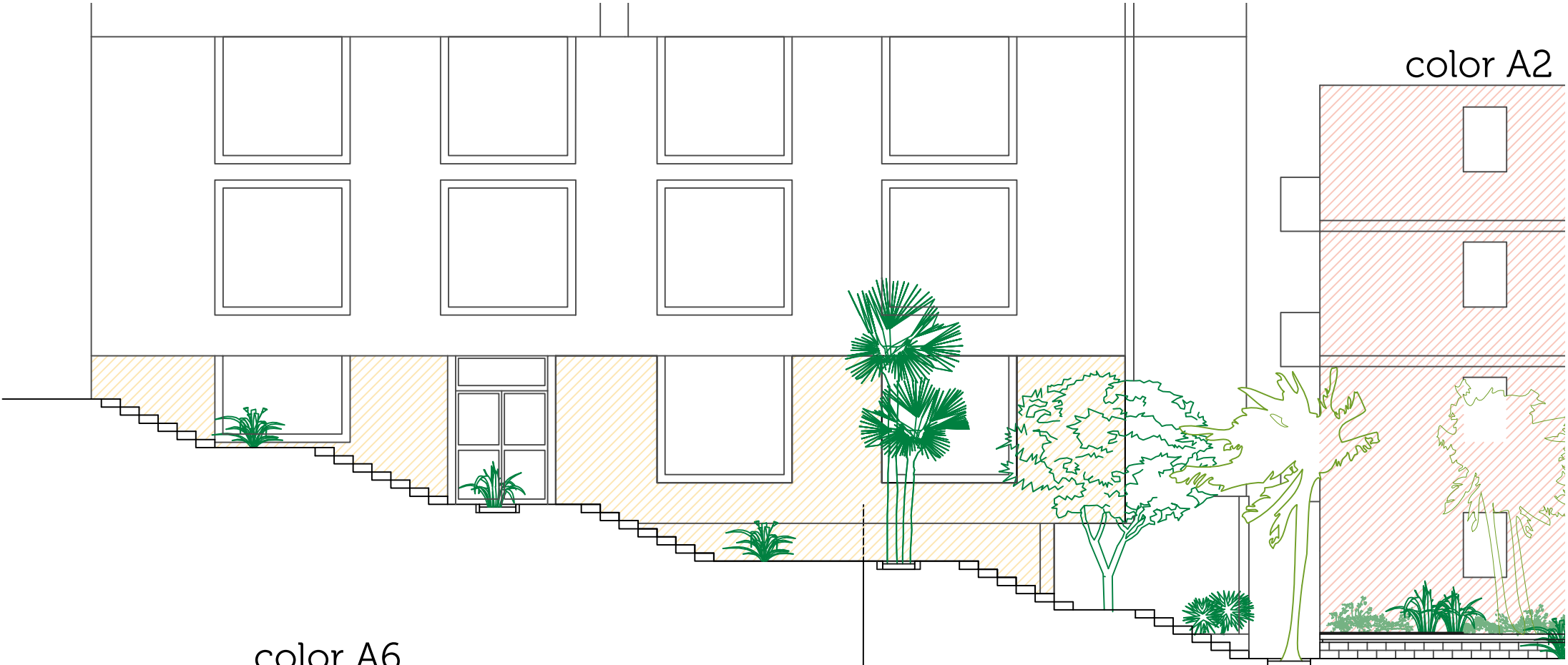
color A5

Elevation West
1:100



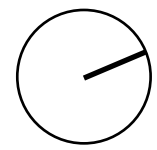
Elevation East
1:100

color A2

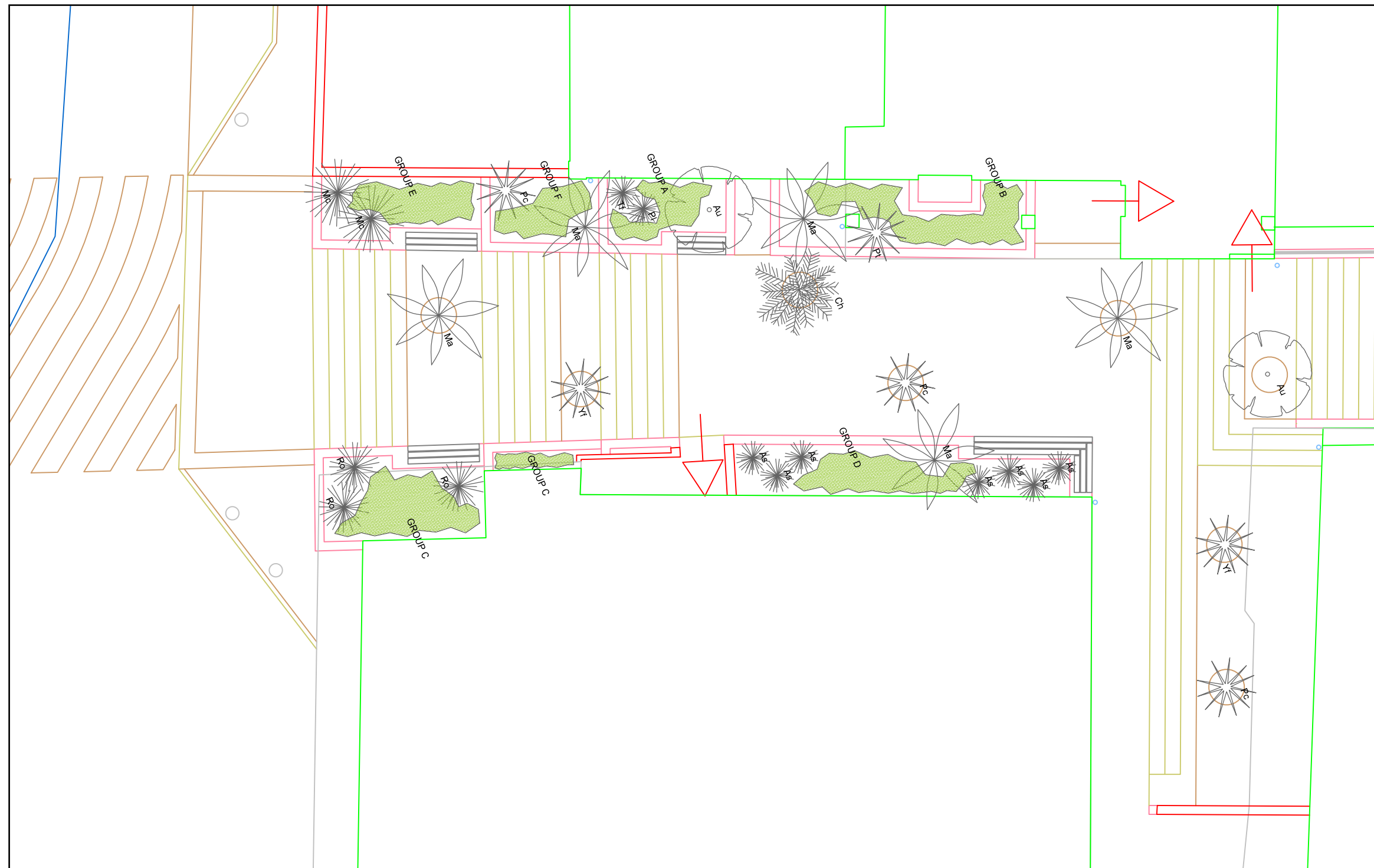


color A6

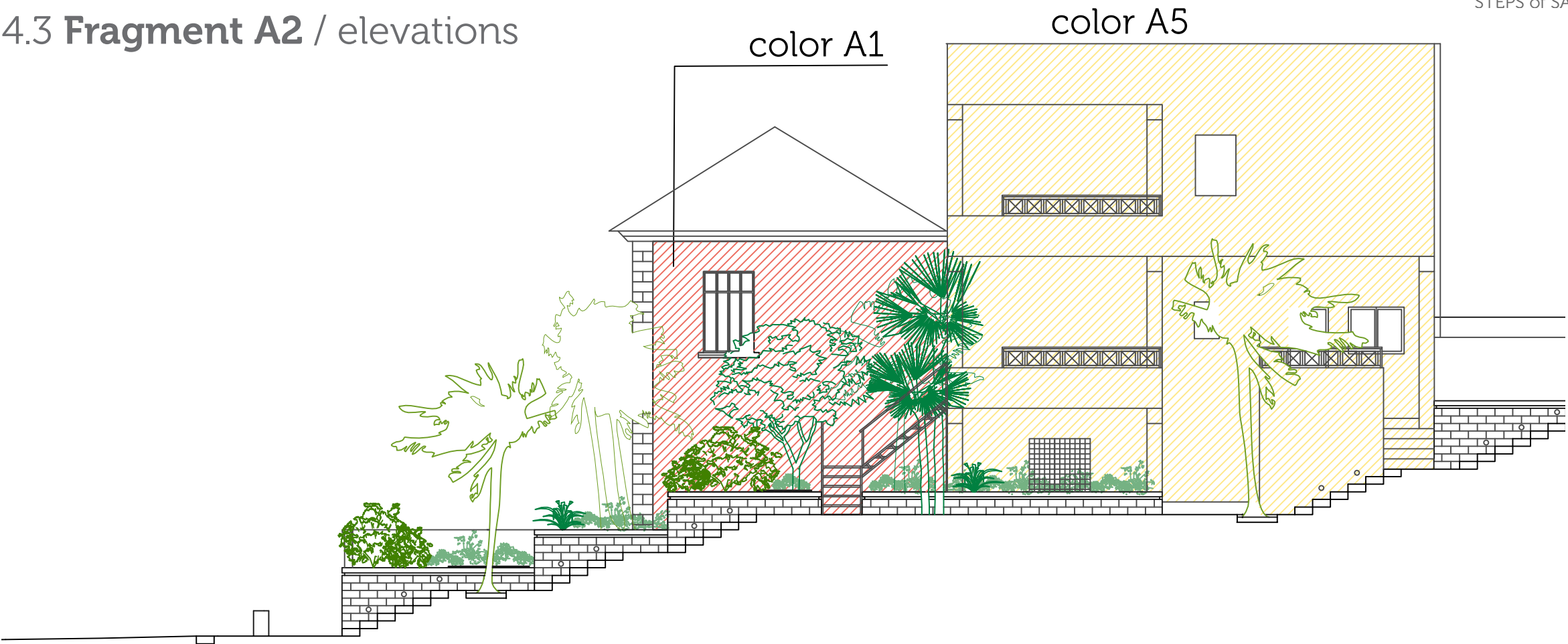
4.3 Fragment A2 / planting



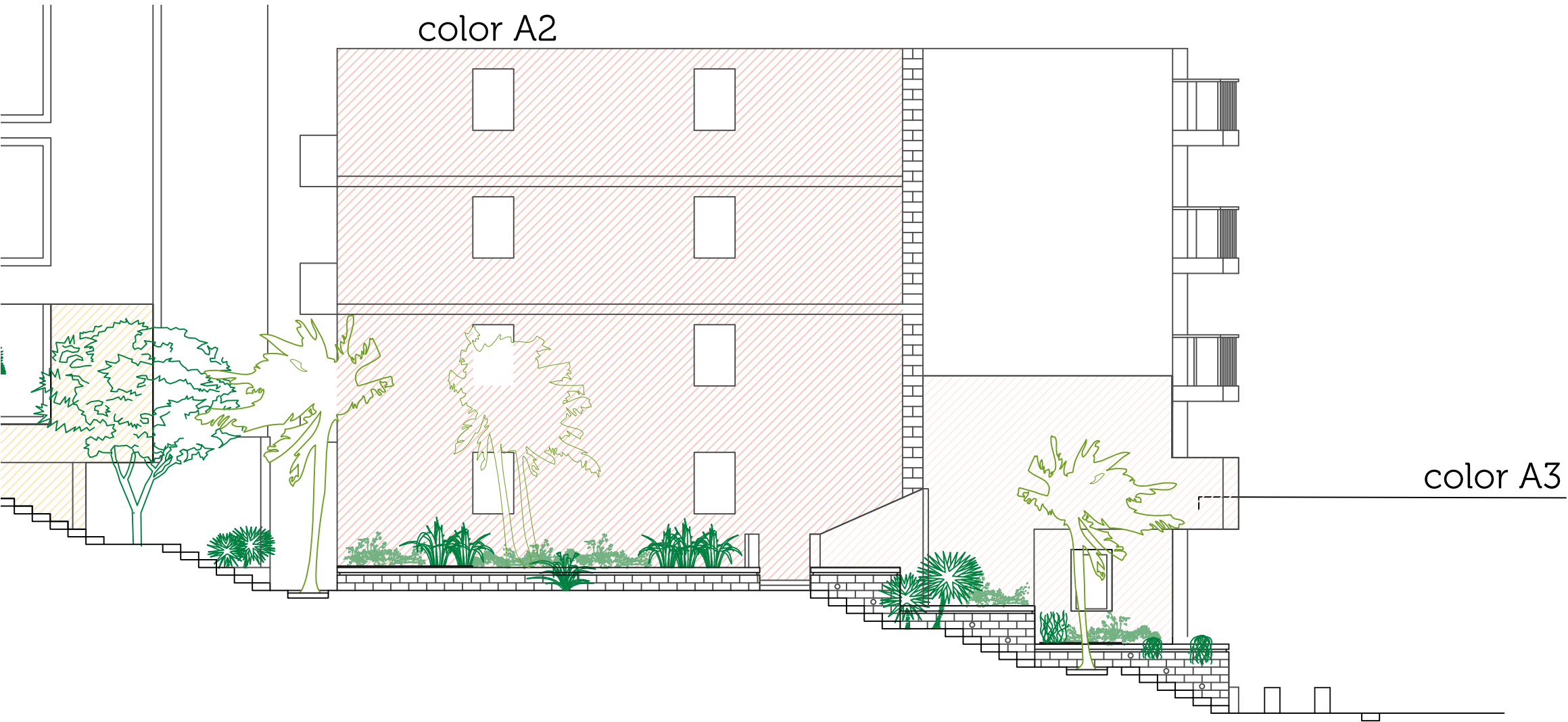
1:100



4.3 Fragment A2 / elevations



Elevation West
1:100

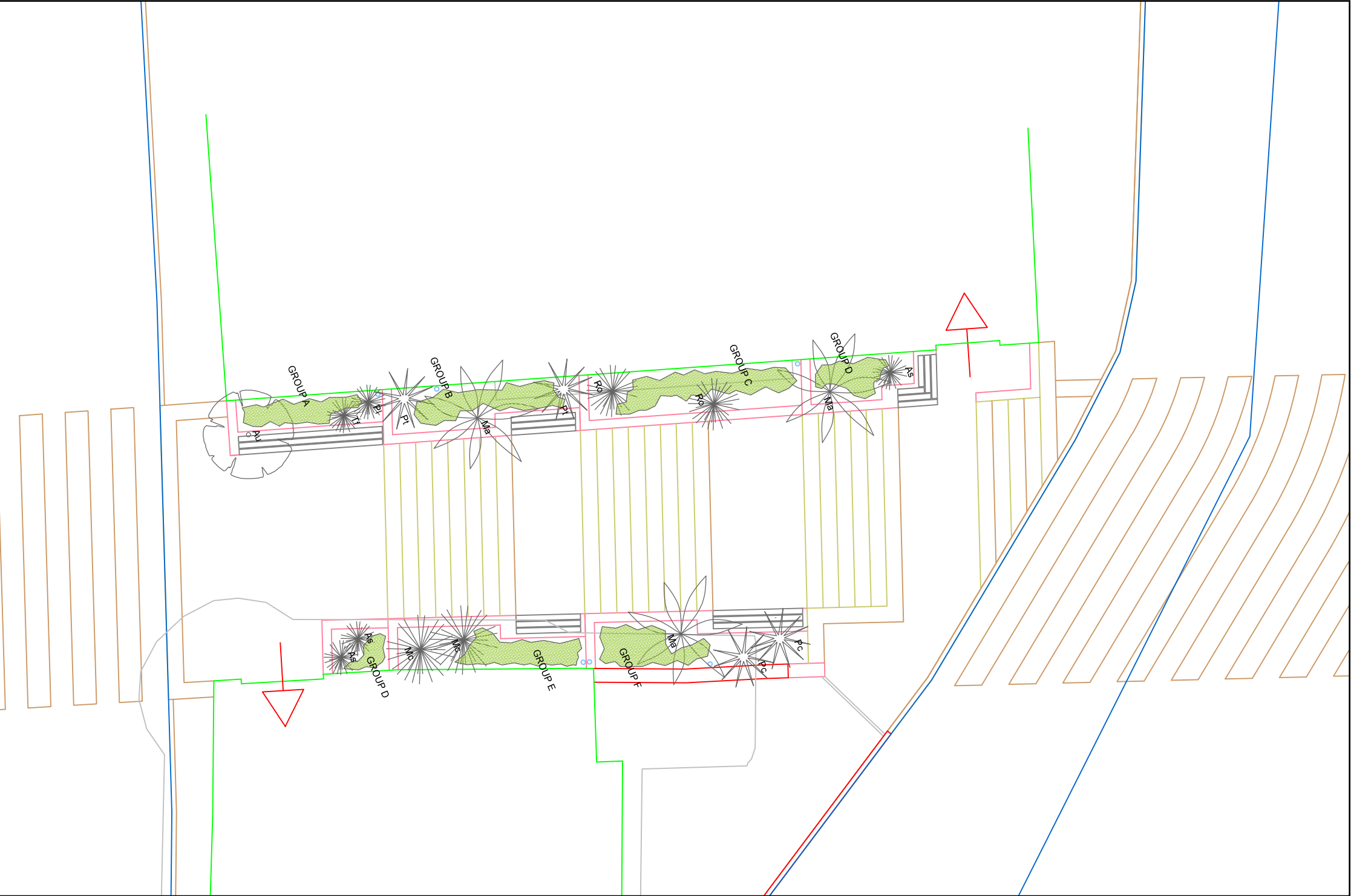


Elevation East
1:100

4.4 Fragment B



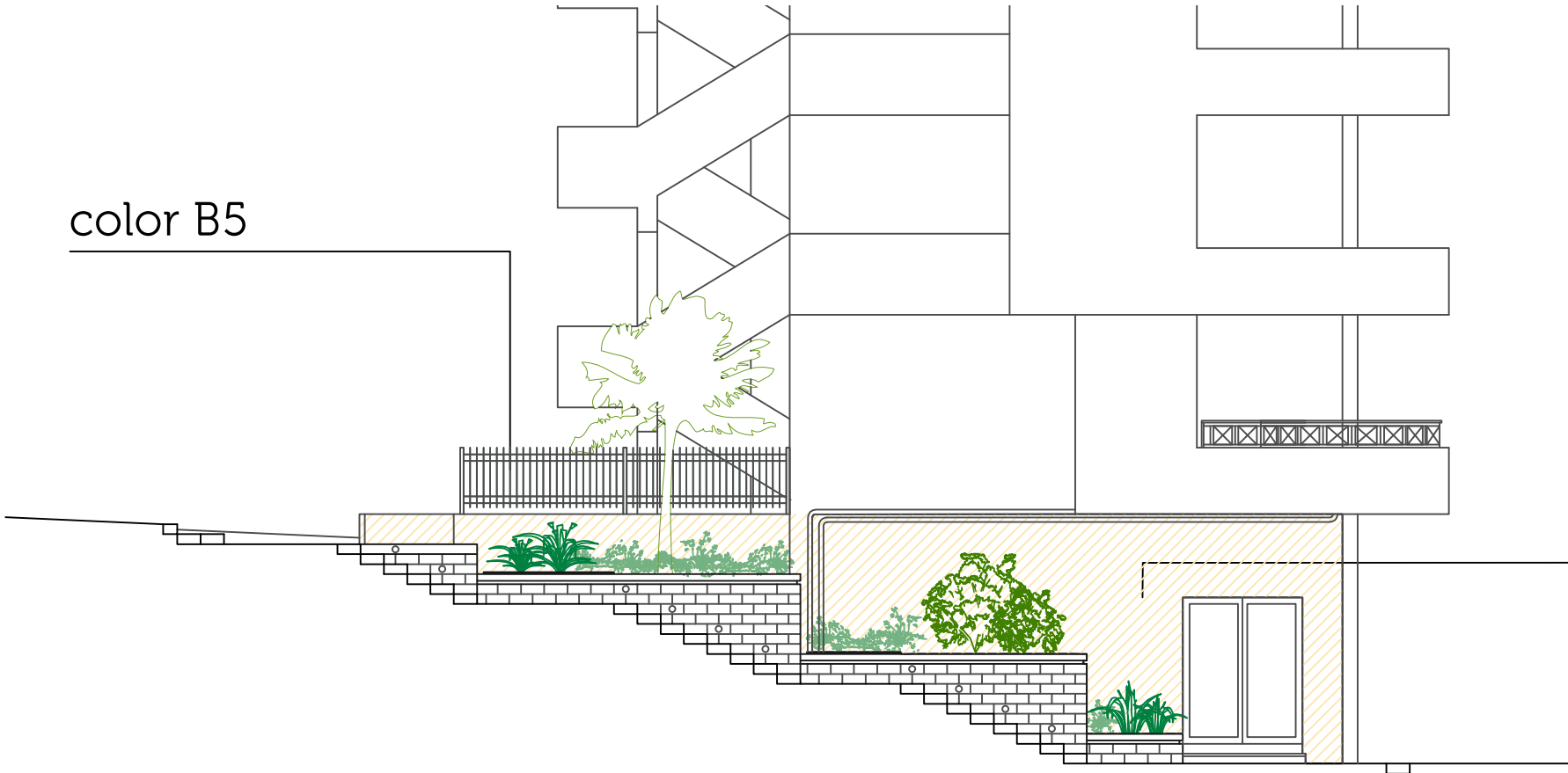
4.4 Fragment B / planting



4.4 Fragment B / elevations



Elevation West
1:100



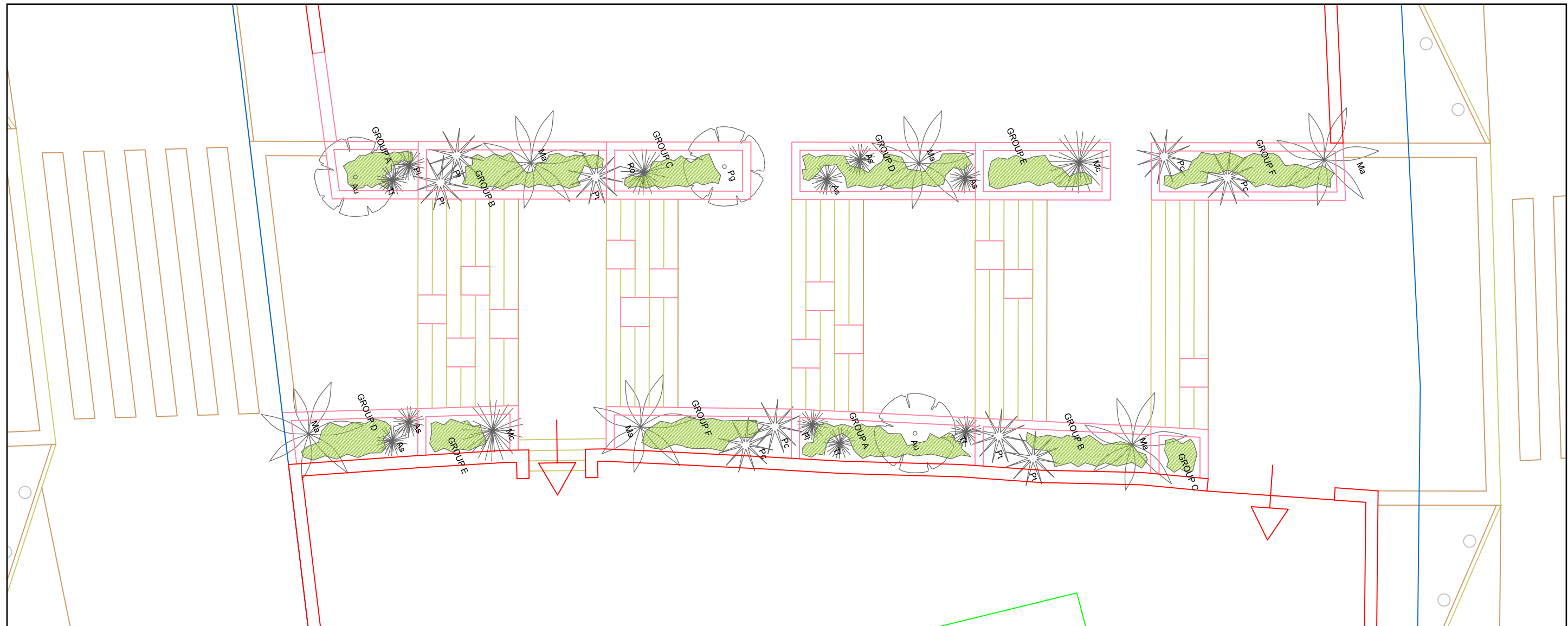
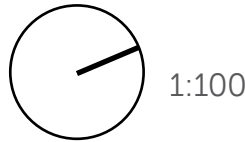
Elevation East
1:100

color A5

4.5 Fragment C



4.5 Fragment C / planting

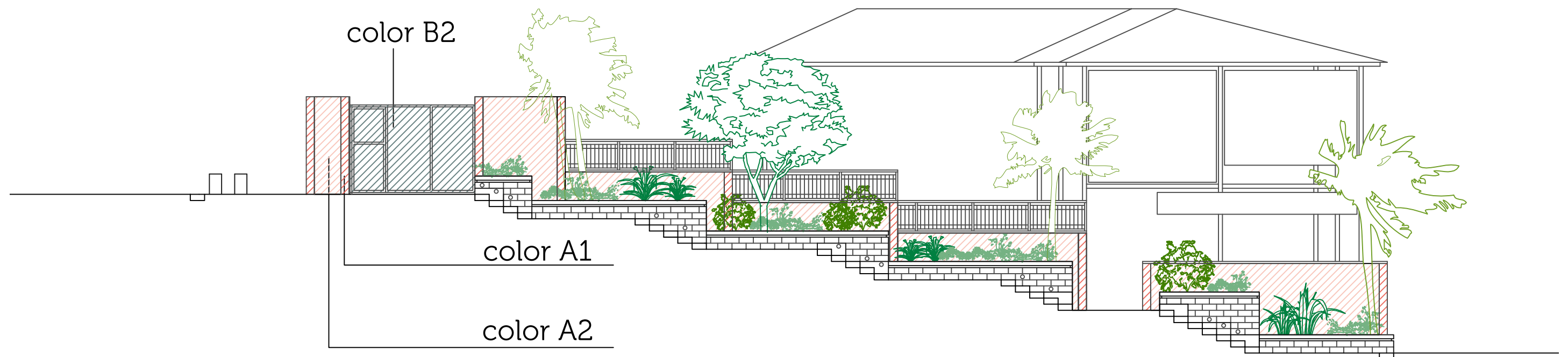


4.5 Fragment C / elevations

Elevation West 1:100



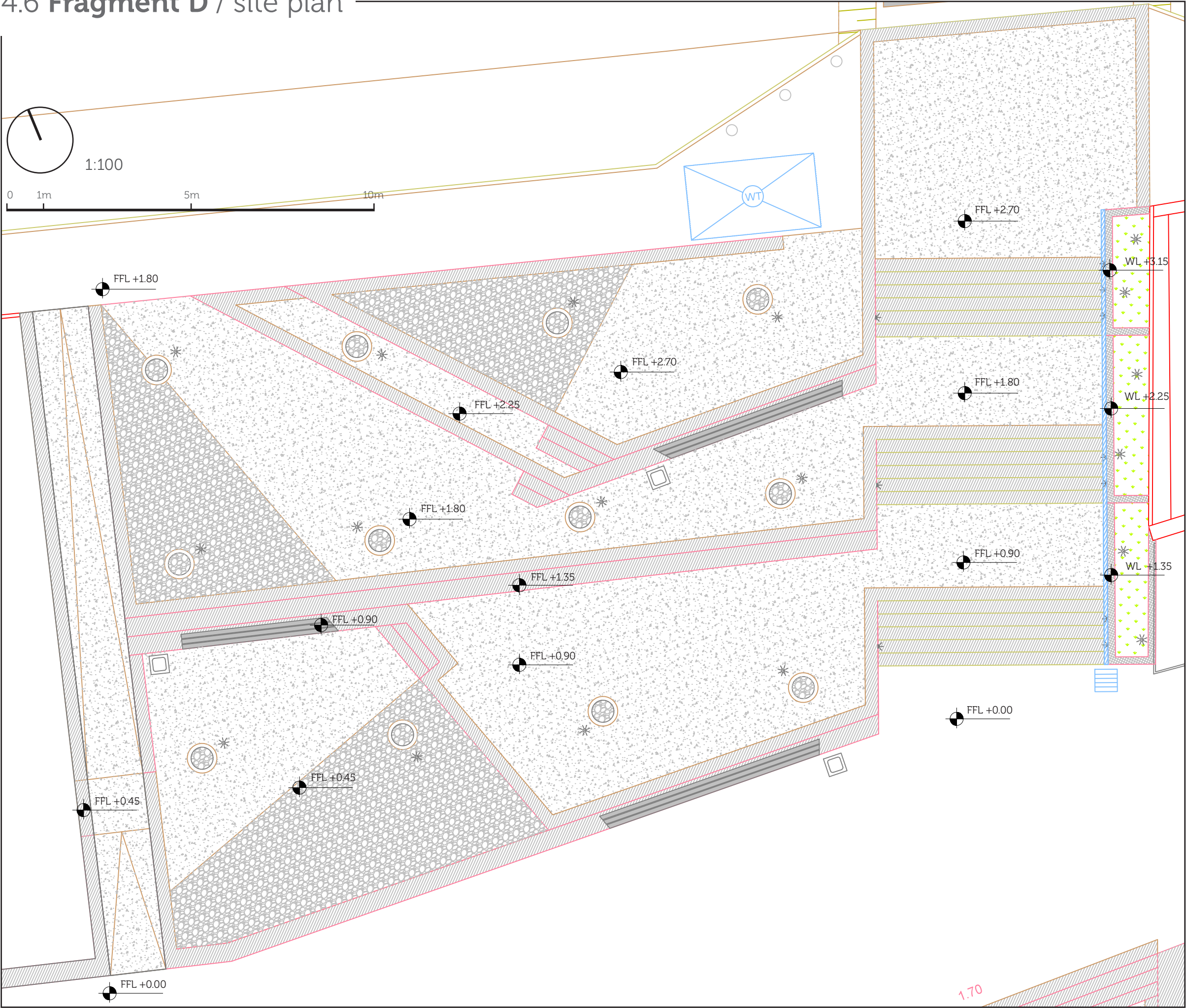
Elevation East 1:100



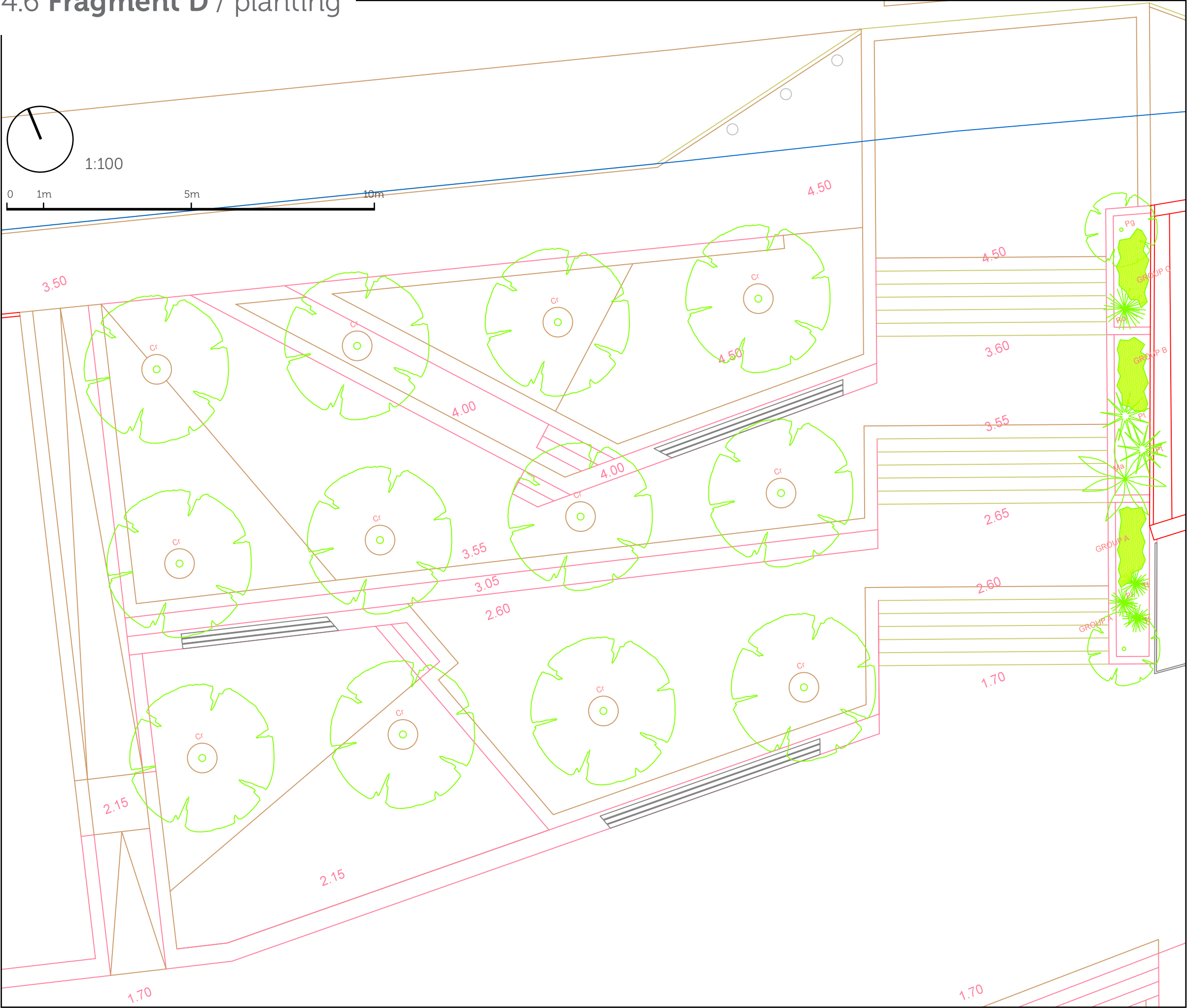
4.6 Fragment D



4.6 Fragment D / site plan

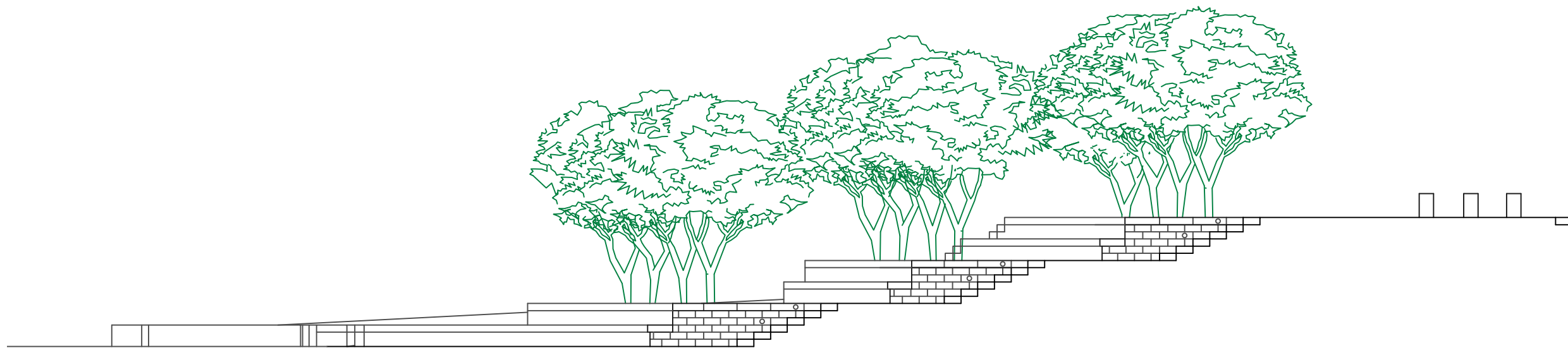


4.6 Fragment D / planting

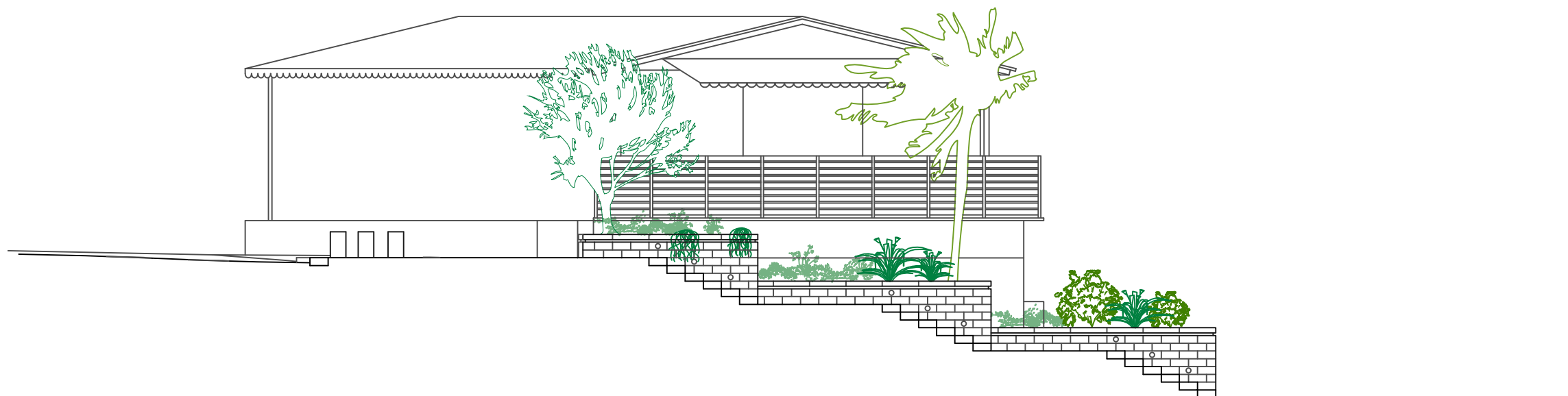


4.6 Fragment D / elevations

Elevation West 1:100



Elevation East 1:100



4.7 Fragment E [Slow track] / site plan

